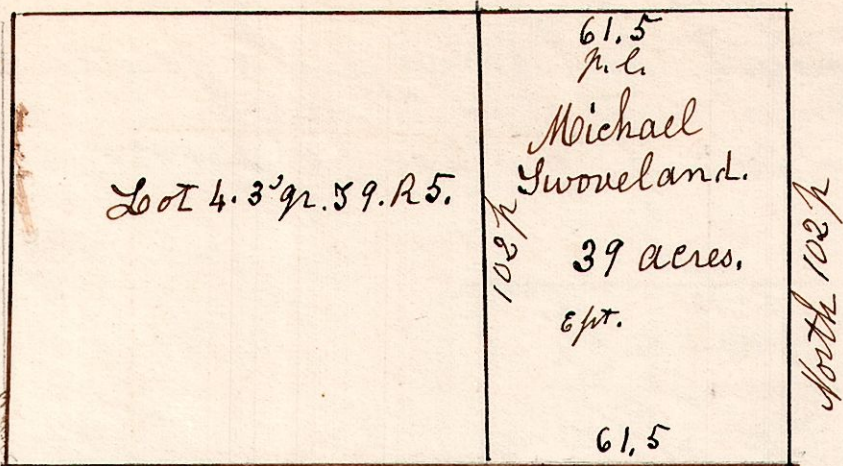


5. 9. 4. 3^{qr}.

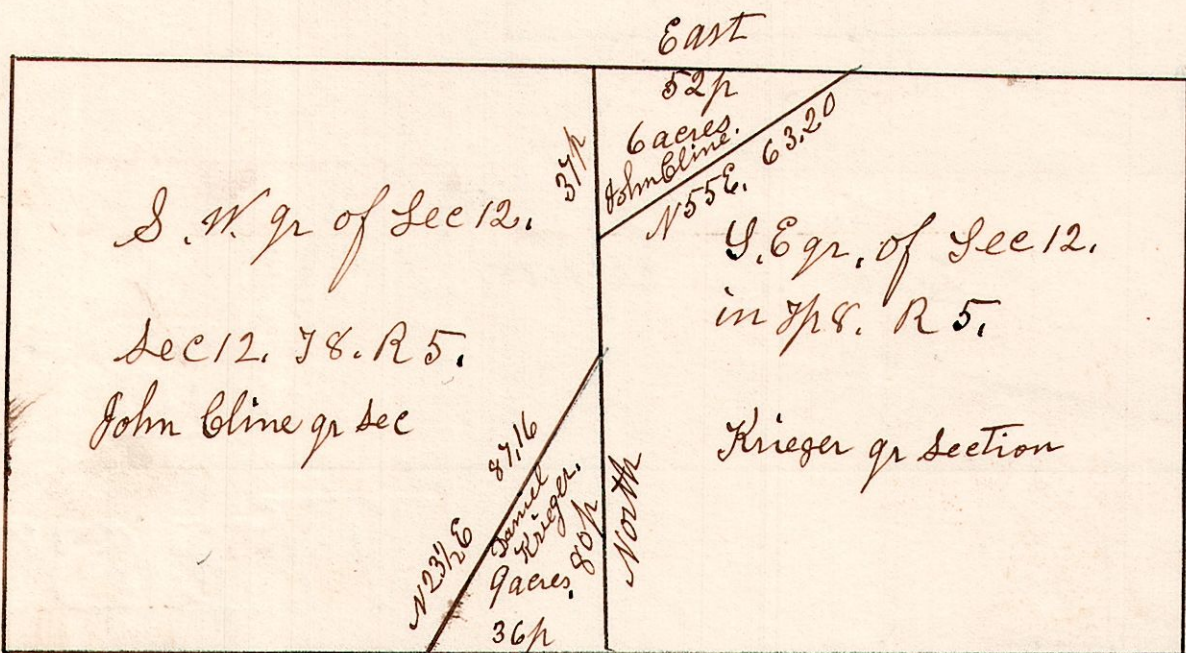
March 24th 1845.



March 24th 1845. Surveyed the east part of said lot.

5-8-12.

March 21st 1838.

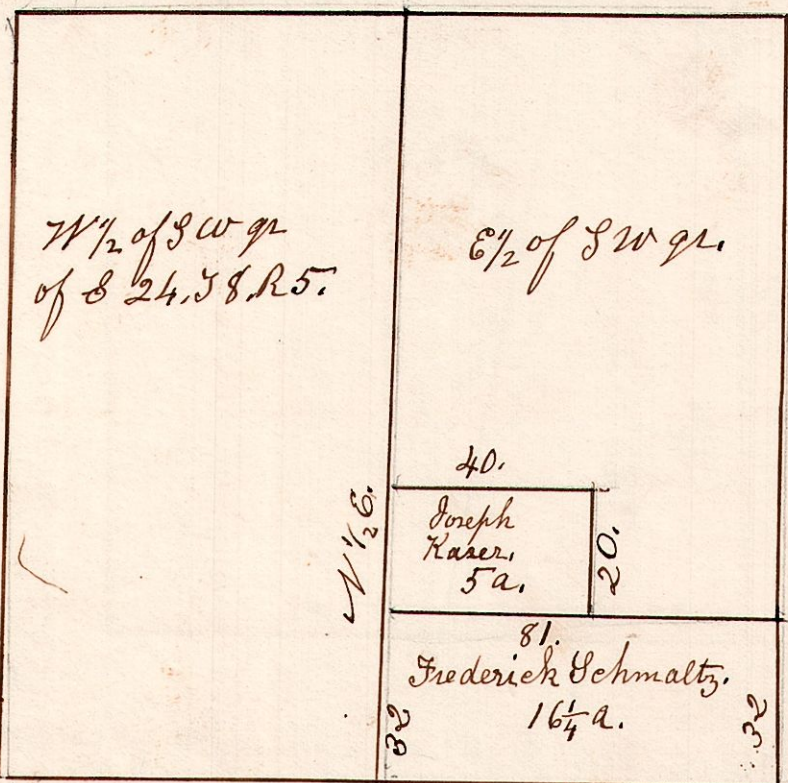


March 21st 1838.

5-8-24th S.W. qr

May 3rd 1850.

Sec 24. T. 8. R. 5. S.W. qr.



May 3rd 1850. Surveyed F Schmaltz 16 1/4 acres. Joseph Kaser 5 acre piece.