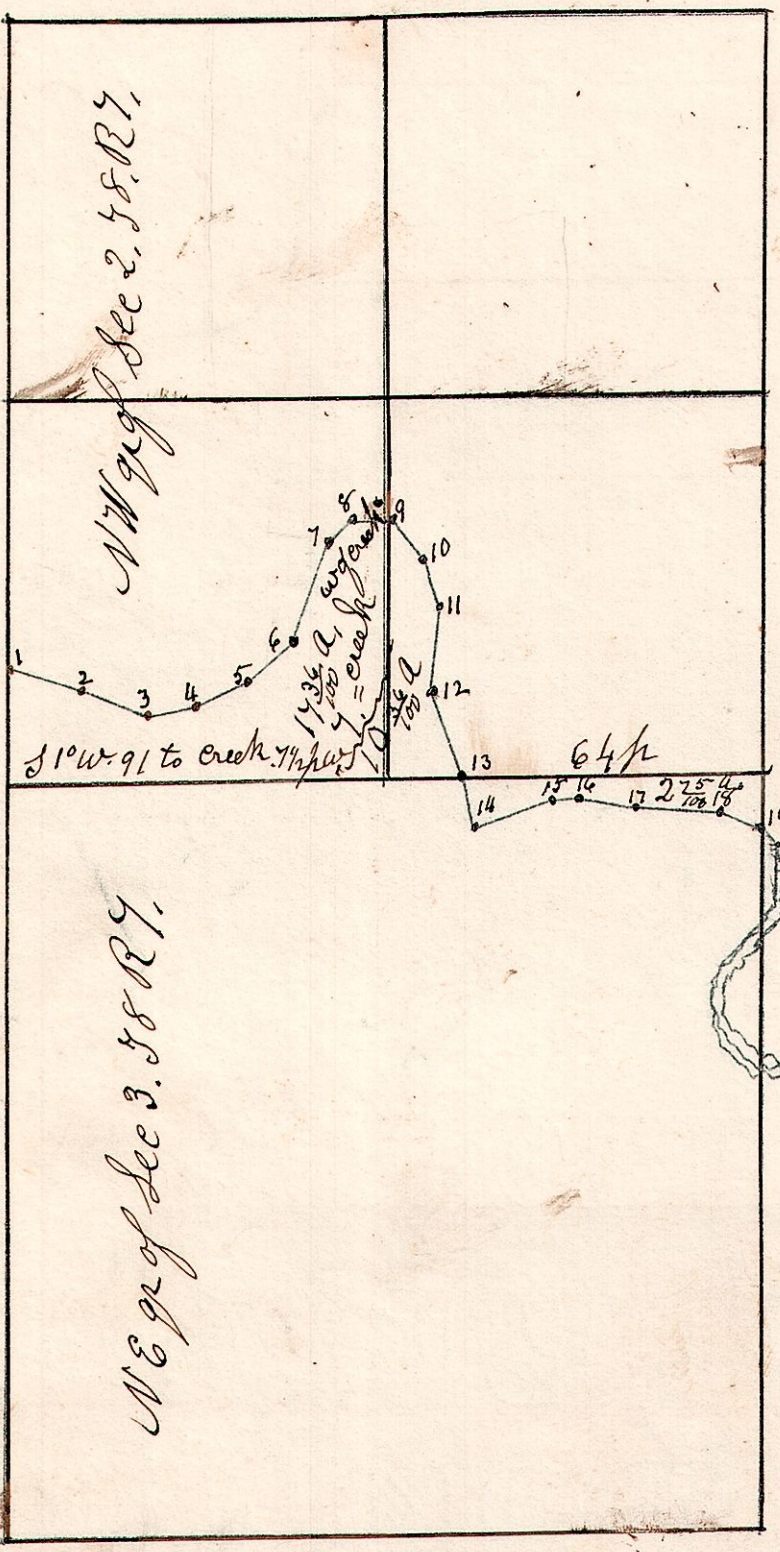


7. 8. 2.

July 30th 1855.
 Surveyed for M^{rs} Willis Hoagland.

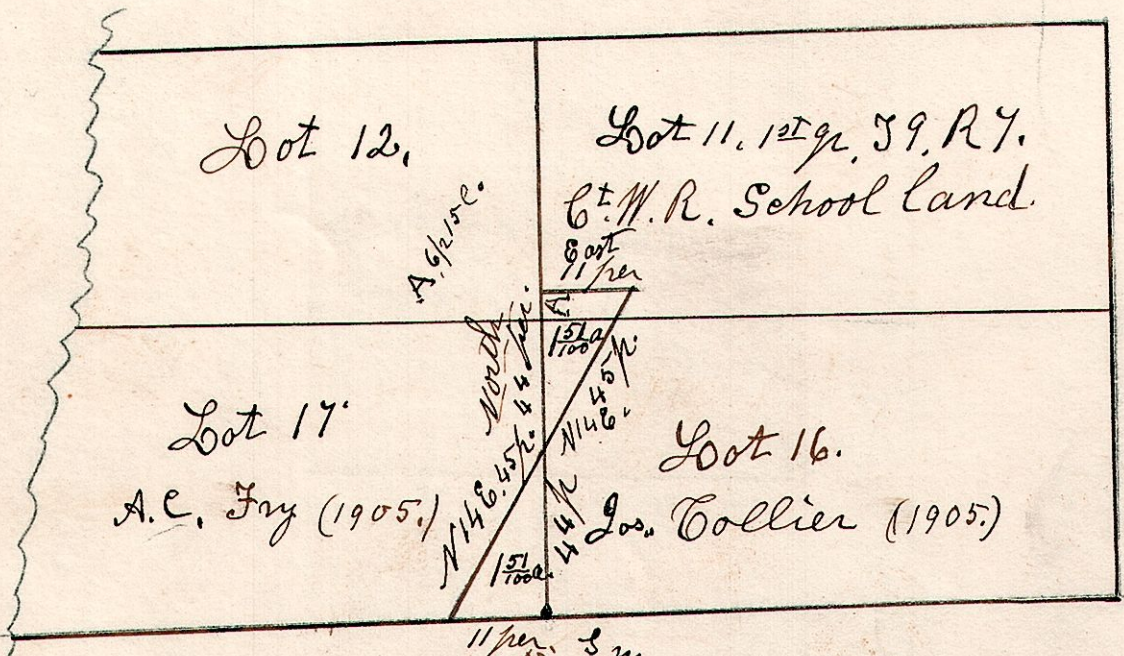


1.	S 16	W	16 1/2
2.	S 20 1/2	W	15
3.	S 7 1/2	E	9
4.	S 20 1/2	E	14
5.	S 37 1/2	E	12
6.	S 68 1/2	E	23
7.	S 39 1/2	E	6
8.	S 2	E	9
9.	S 50	W	11
10.	S 82	W	10
11.	N 87 1/2	W	18
12.	S 70 1/2	W	20
13.	S 77	W	11
14.	S 18 1/2	E	17
15.	S 4	E	6
16.	S 11	W	11
17.	S 4	W	21
18.	S 31	W	8.7 to S line of gr.

North

7. 9. 11. 16. 17. 12^{gr}.

Nov 30th 1837.



275
 165
 181.5

Nov 30th 1837. S. R. Surveyor.