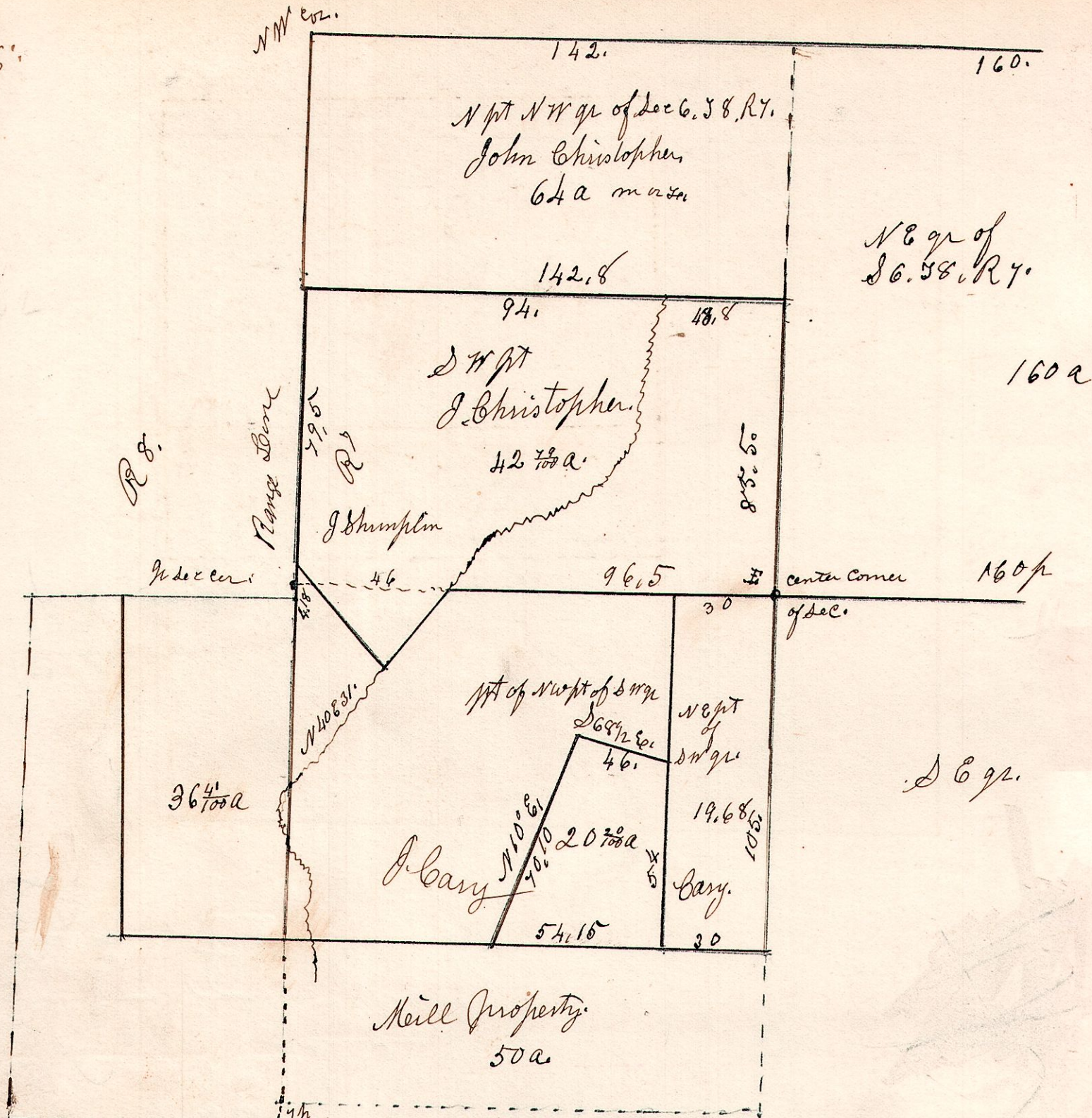


7. 8. 6.

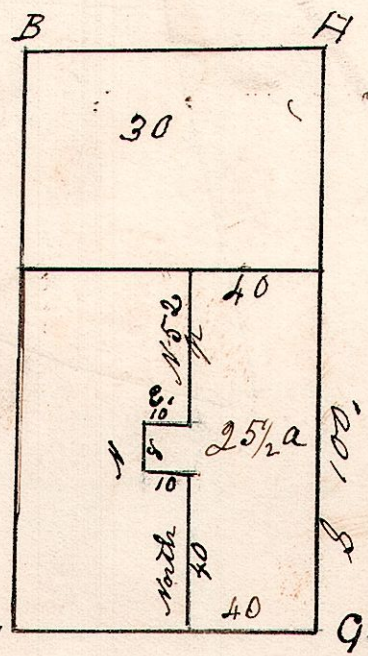


Surveyed for John Cary March 25th 1851.
 Surveyed John Christopher partition case Sept 28th 1871.

7. 9. 20. W 1/2 of N 8 q. Sec 20. 5 9. R 7.

March 4th 1845

Jugaby Hoagland,



W. Oak 20 S 87 W 42.
 Maple 12. N 9 W. 24

Dogwood 16 S 54 W 20.
 B Oak. 24 N 64 W 36.

And we do estimate the just value of 30 acres described in the within order, to wit thirty acres off the north end of an equal width across the said tract of land, at 450 dol, it being 15 dolls per acre.