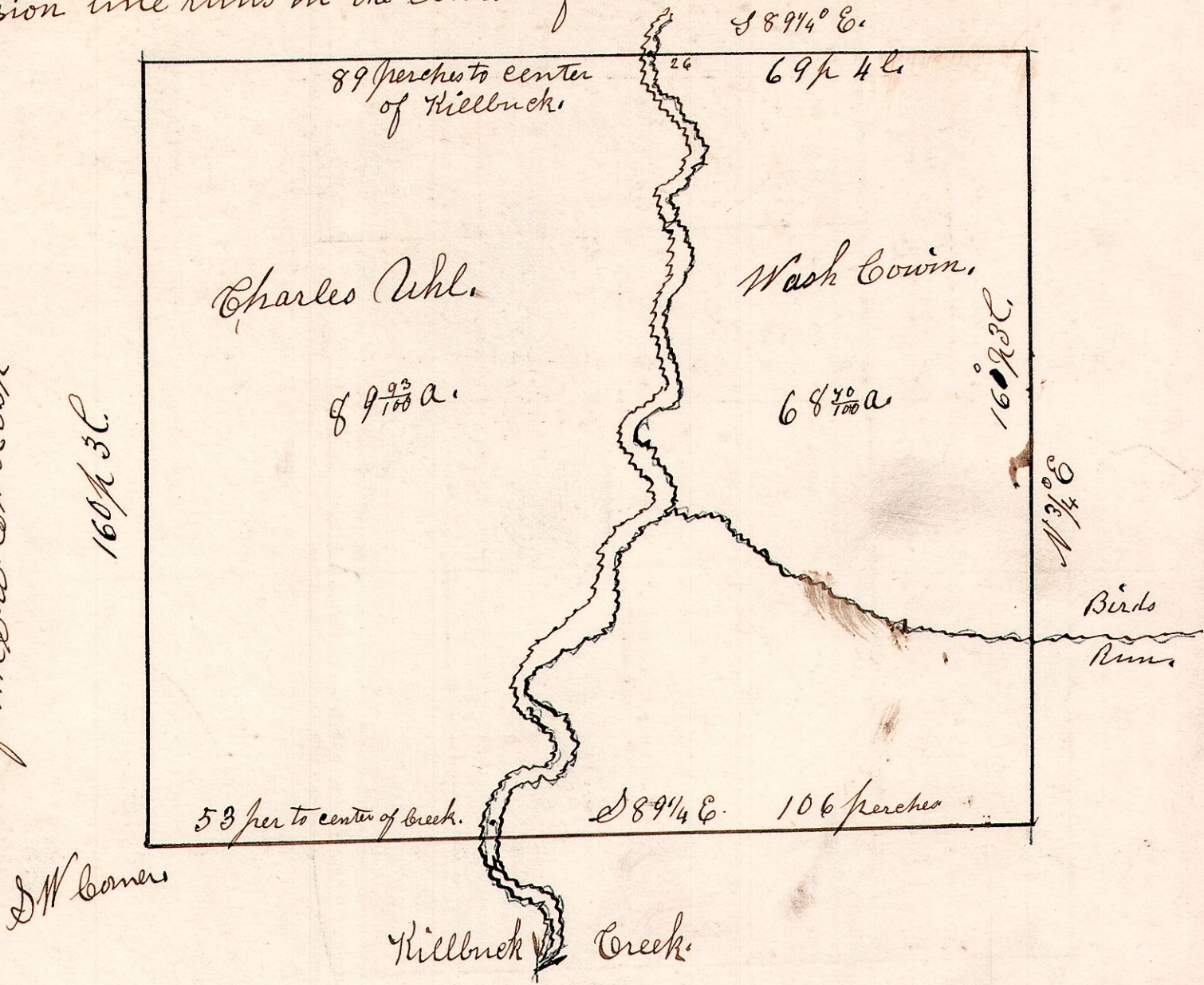


7.9.22. NW. November 9<sup>th</sup> 1853.  
The division line runs in the center of Killbuck.

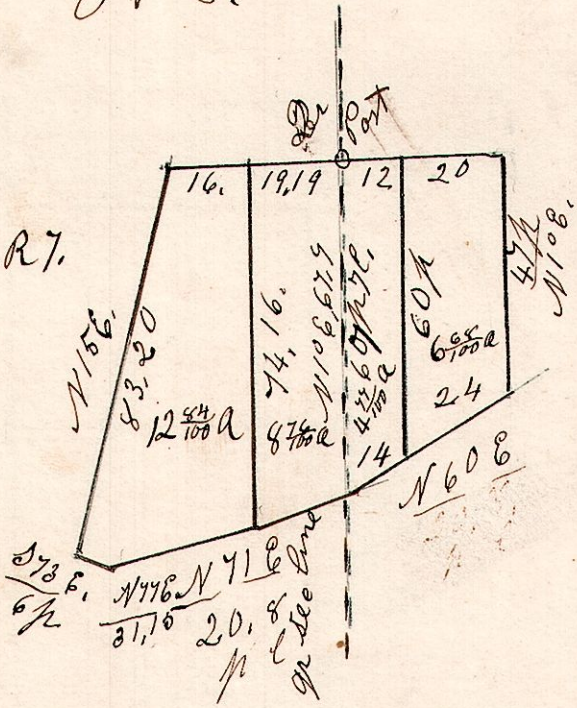
To center of creek on north  
line from NW corner 89 p.  
To center of creek on south  
line from SW corner 53 p.



7.9.11. SWqr January 30<sup>th</sup> 1869.

J. G. Adams.

SWqr Dec 11, 59. R7.



J. G. Adams Dec 11, 59. R7.