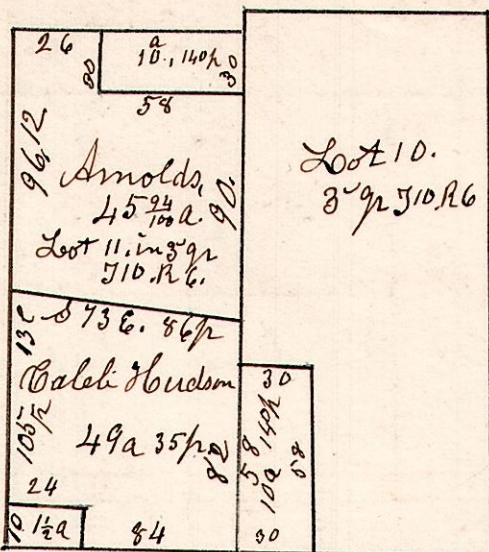


6.10.10. 3³/₄ q^r

March 14th 1868.
R. 6. T. 10. 3³/₄ q^r. & lot 11.

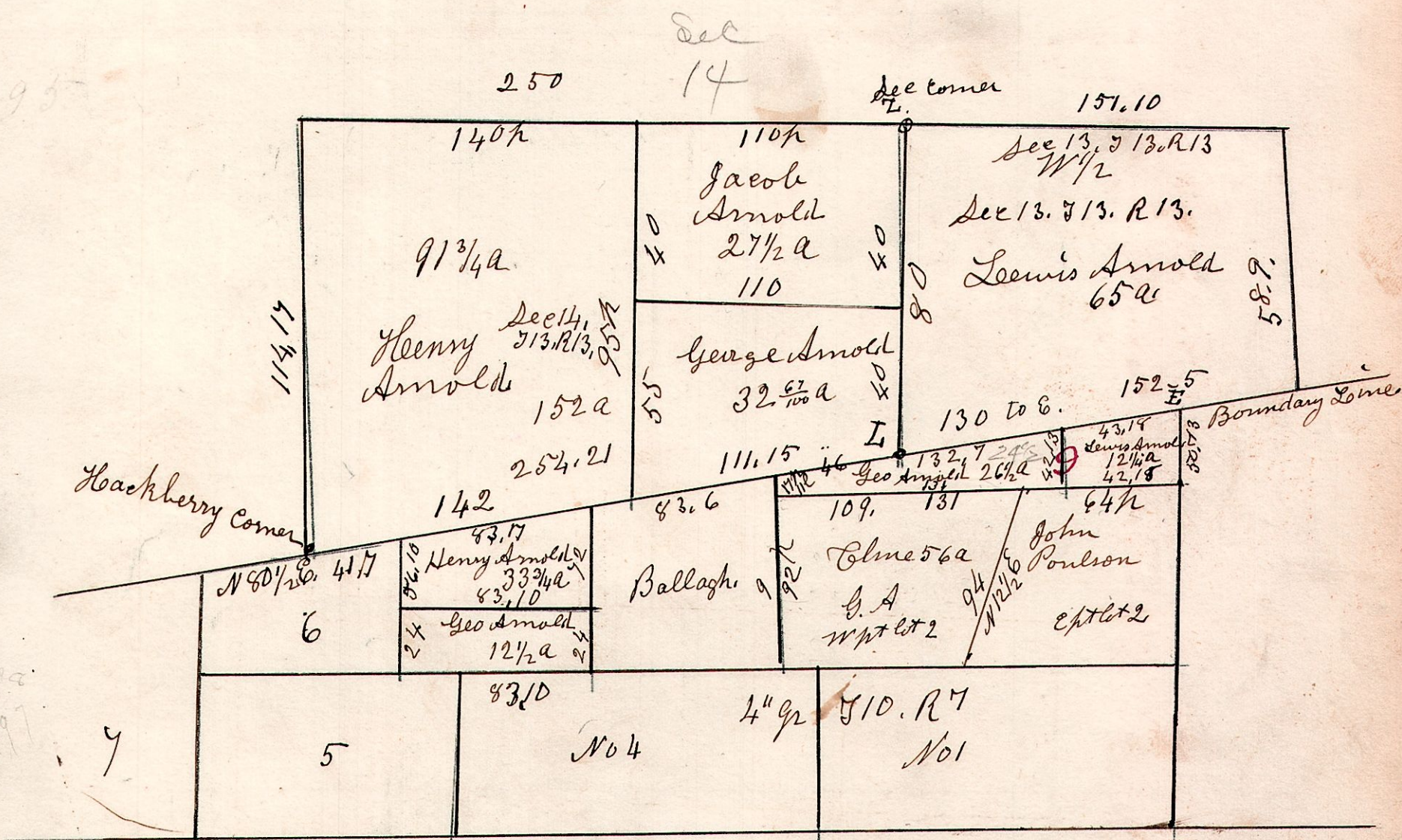
1/2 a Surveyed for
Elias Mast.



SW corner

March 14th 1868. SW corner of Lot 11.

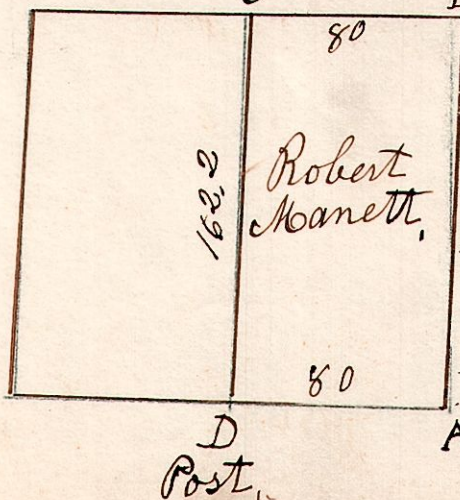
7-10.2 4⁹/₁₆
13-13-13.



- L. Beech 16. N 79 E 28
- " Do 18. N 10 W 38
- Z. Chestnut 15. N 75 W 30
- " W Oak 12 S 57 E 17

7. 8. 13. C 1/2 of NW q^r.

September 20th 1830, Surveyed the East 1/2
of the NW q^r of Sec 13. 58. R. T.
R. Oak 30 S 65 W 19.



A. Hickory & South 4.