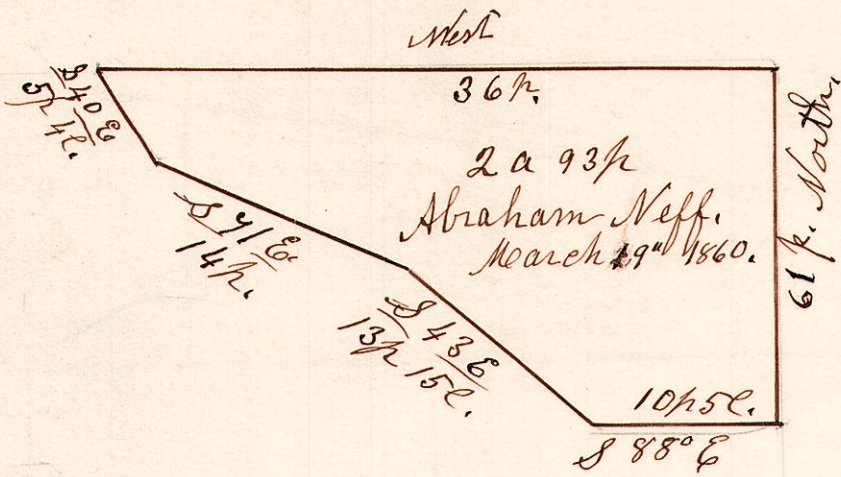


6.9.6. 1/2

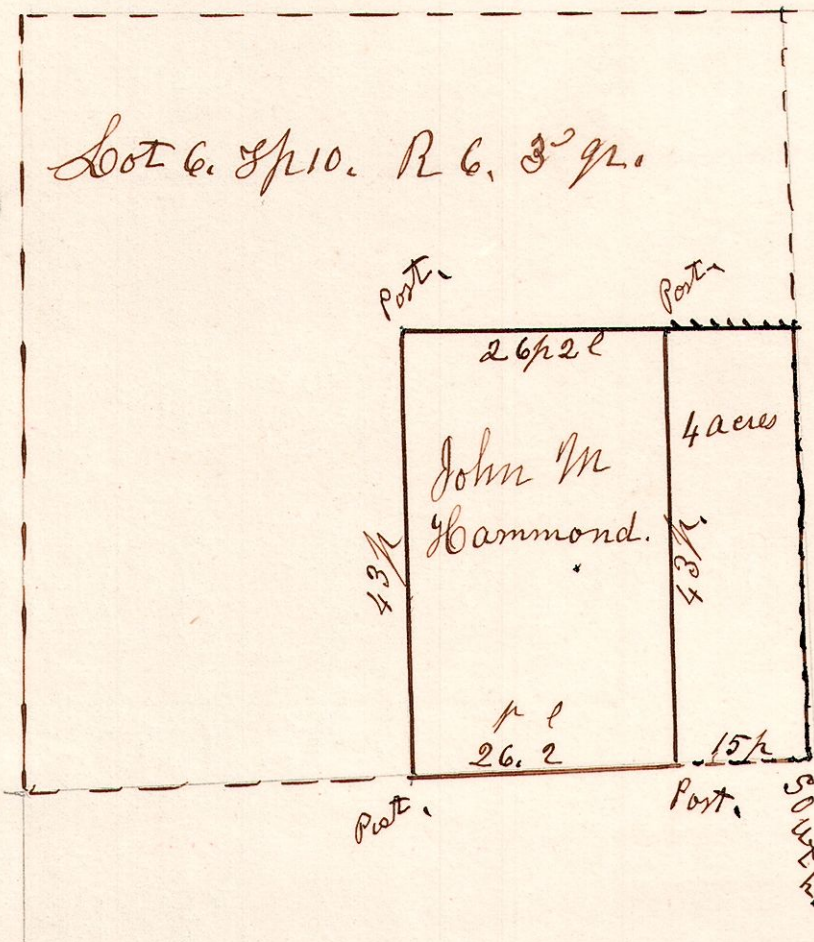
March 19th 1860.

Eliaser Wolgast.
March 19th 1850.



6.10.6. 3/4

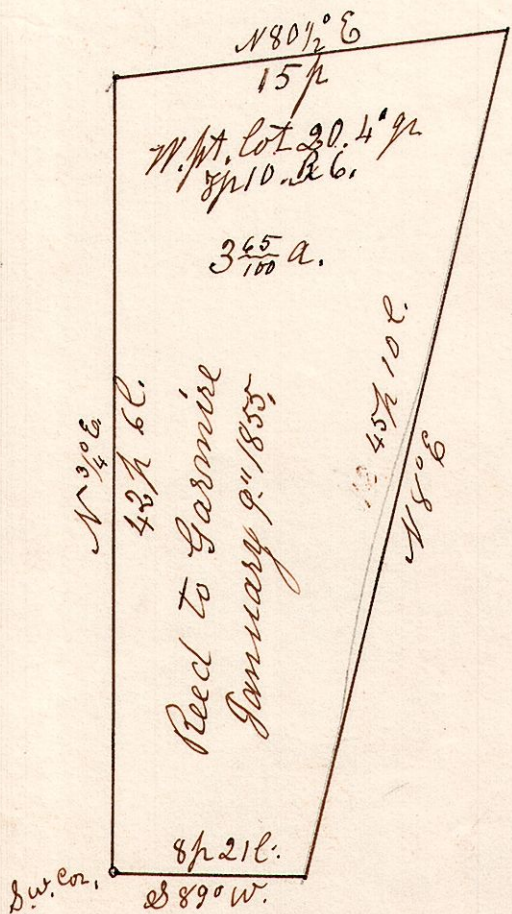
Lot 6. T10. R 6. 3/4



Surveyed the above June 14th 1834. Being 7 acres, being the most north westerly part of 11 acres situated in the S E corner of lot No 6 in T10. R 6. S3. a 3/4 quarter, which was sold for taxes to Wm Porter on the 26th day of December 1831, thence transferred to John Hammond on 7th June 1834. John M Hammond.

6.10-20. 4/4

January 9th 1855.



A Survey made for Joshua Reed and Daniel Garmire. Being the south west part of Lot No 20, 4th quarter, in Township 10, of Range 6. Military.