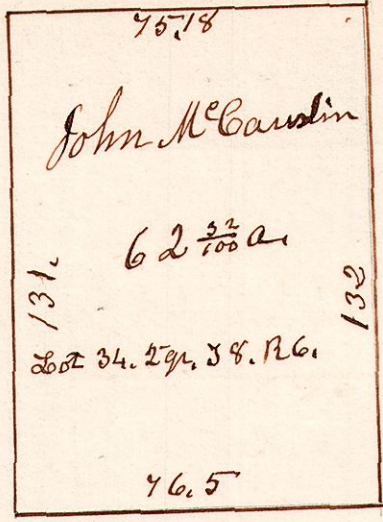
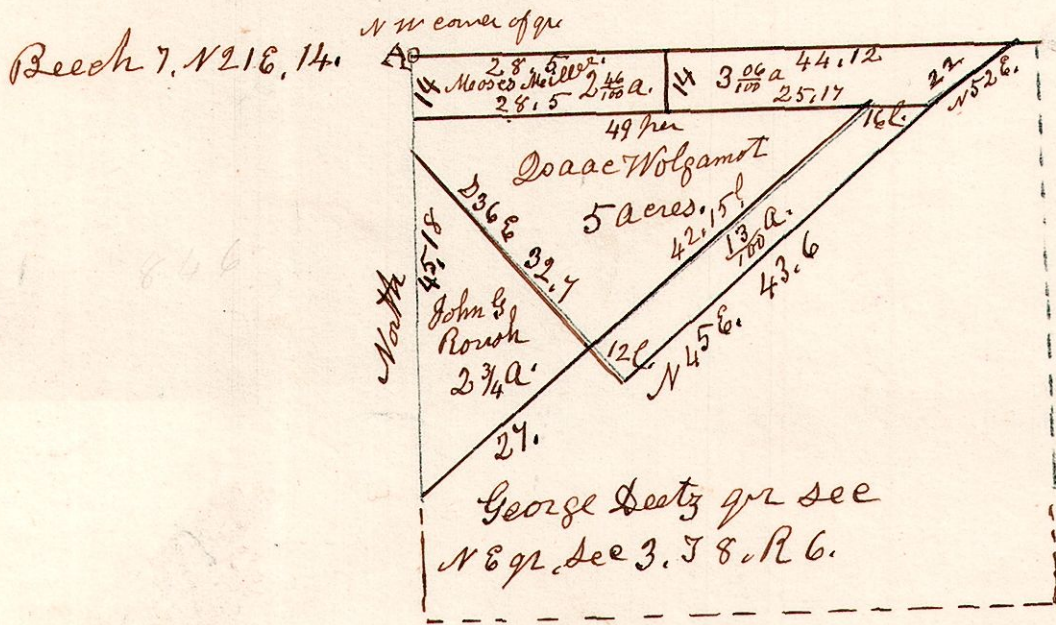


6. 8. 34. 2<sup>nd</sup> gr Fraction.  
March 1<sup>st</sup> 1838



6. 8. 3. <sup>NE</sup> 2<sup>nd</sup> gr. March 10<sup>th</sup> 1849.

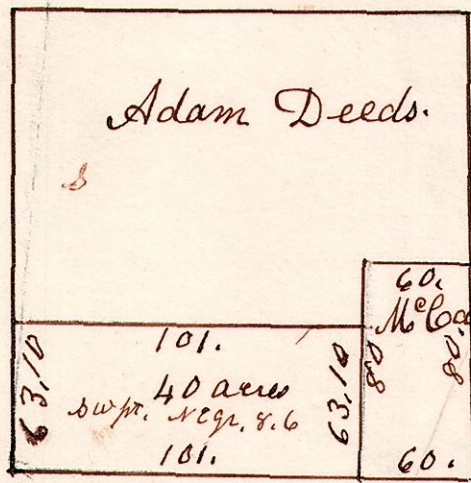


1/100 a sur<sup>ve</sup> May 21<sup>st</sup> 1873  
Deed from George Deetz & Molly his wife  
to Daniel Deetz for 1/100 acre price \$9.00

Surveyed the above March 10<sup>th</sup> 1849.

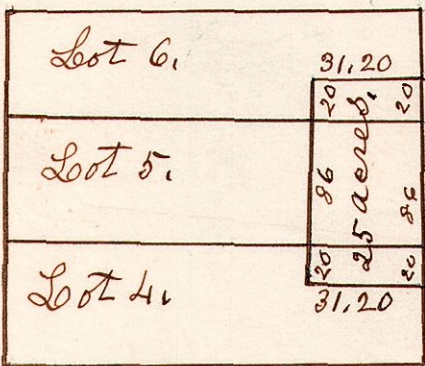
6. 8. 8. <sup>NE</sup> 2<sup>nd</sup> gr. February 28<sup>th</sup> 1838.

Surveyed 40 acres the S W part  
of the NE gr of Sec 8. in T 8. R 6.



6. 8. 4. 5. 6. 2<sup>nd</sup> gr. March 31<sup>st</sup> 1838

Lots 4-5-6. 2<sup>nd</sup> gr 38. R6.



Surveyed the NE corner of lot 4. 3 96/100 a  
" East end of lot 5 17 8/100 a  
& the SE corner of lot 6 3 76/100 a  
25. acres.