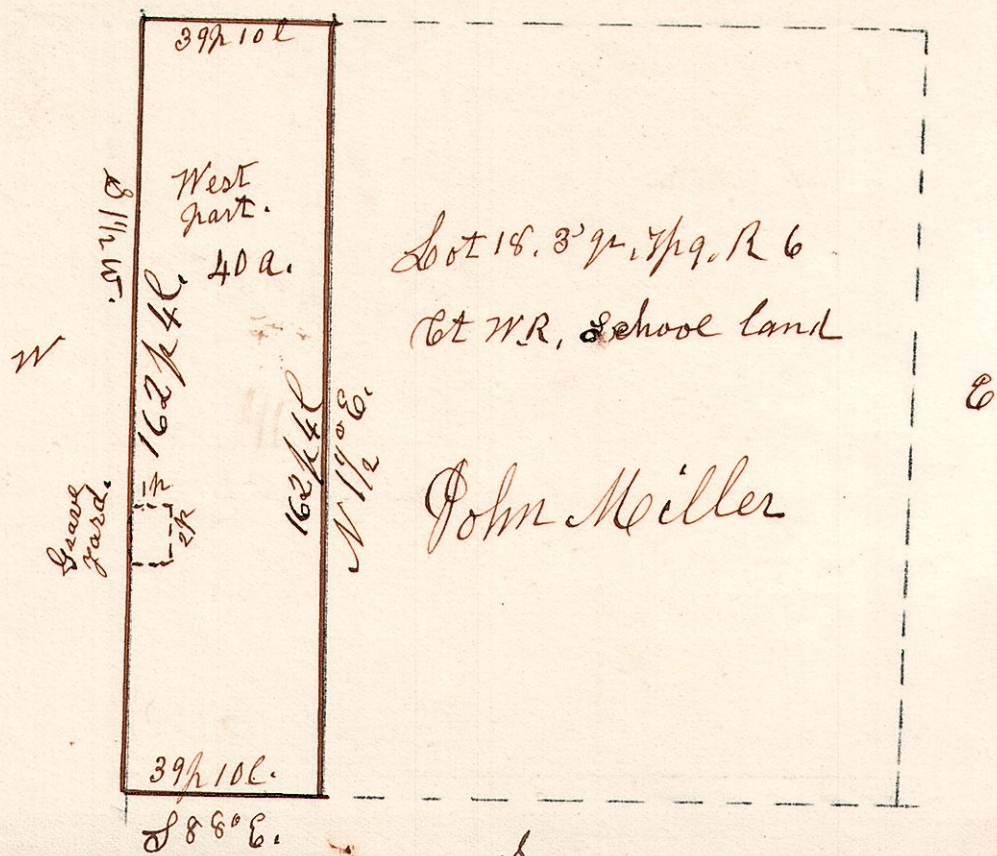


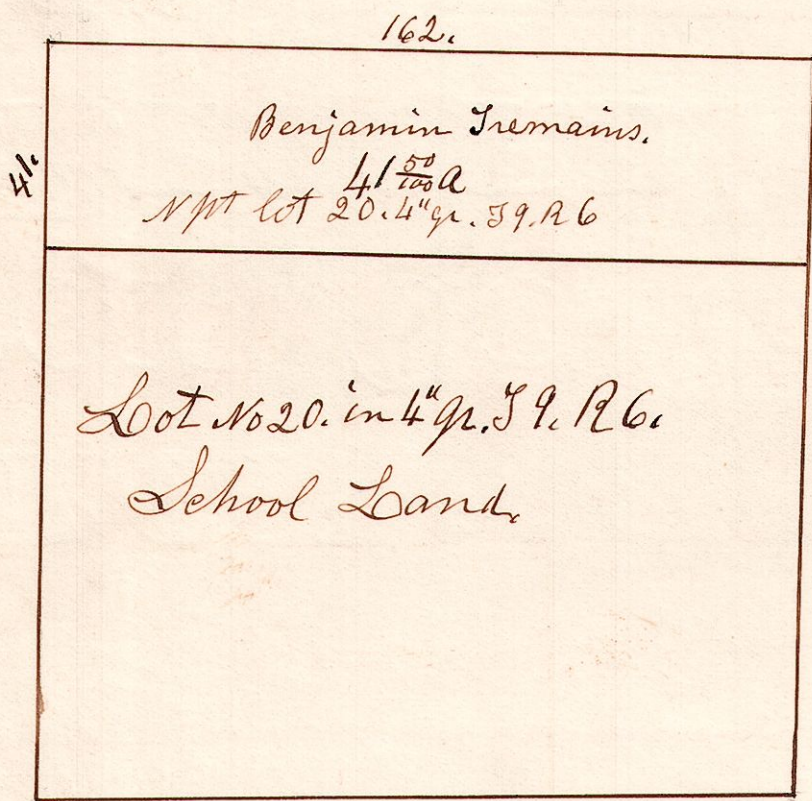
6. 9. 18 $\frac{10^{\circ}}{2}$ December 26th 1871.

N



Surveyed the above 40 acres December 26th 1871.

6. 9. 20. $\frac{4^{\circ}}{2}$ School land Sept 12th 1836



Elisha Daniels and Ann Hannah Daniels his Wife to Benjamin Tremains. for \$50.

6. 9. 13 $\frac{8^{\circ}W}{2}$ June 13th 1873. S 88° E.

