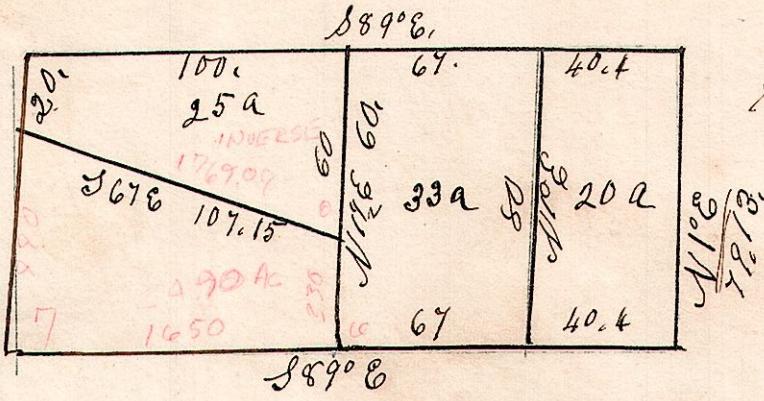


6. 8. 3. 3<sup>rd</sup> q<sup>r</sup>

April 19<sup>th</sup> 1853.

Lot 3. in 3<sup>rd</sup> q<sup>r</sup> of R 6. 3<sup>rd</sup> q<sup>r</sup>.

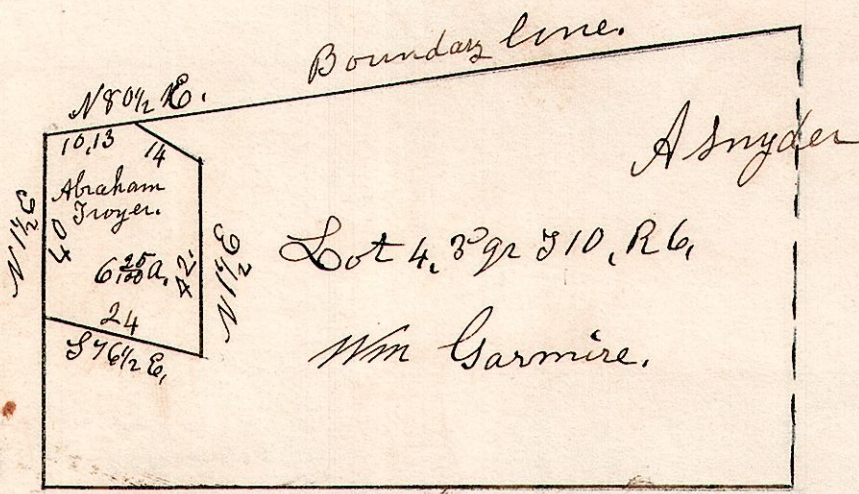


Surveyed for John Conrad.

Surveyed for John Conrad.

6. 10. 4. 3<sup>rd</sup> q<sup>r</sup>.

February 2<sup>nd</sup> 1849.



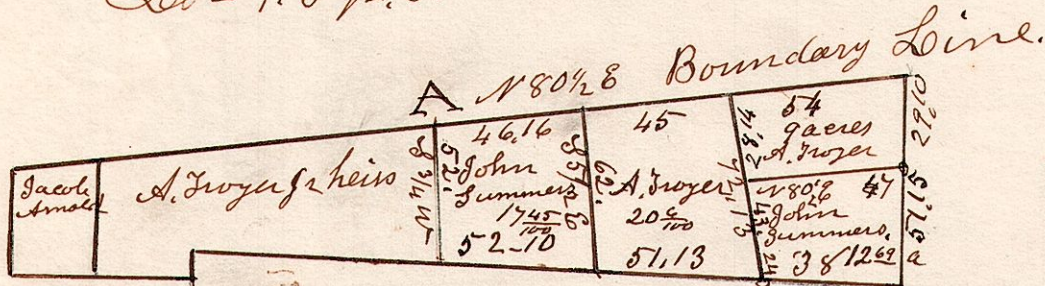
North West part of lot 4 in 3<sup>rd</sup> quarter  
 Township 10, Range 6. Surveyed for  
 A Troyer Feb 2<sup>nd</sup> 1849.  
 (A. Troyer bought this piece from Wm Garmire.

6. 10. 9. 3<sup>rd</sup> q<sup>r</sup>

April 27<sup>th</sup> 1846.

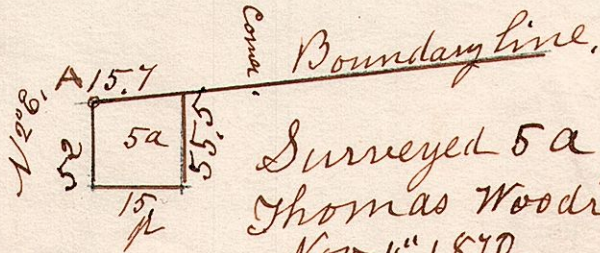
John Summers.

Lot 9. 3<sup>rd</sup> q<sup>r</sup>. S 10. R 6.



Congress Corner on Boundary line at A.  
 Sum 158256 37.

April 27<sup>th</sup> 1846.



Surveyed 5a for  
 Thomas Woodruff  
 Nov 4<sup>th</sup> 1870.  
 Corn at cor A.