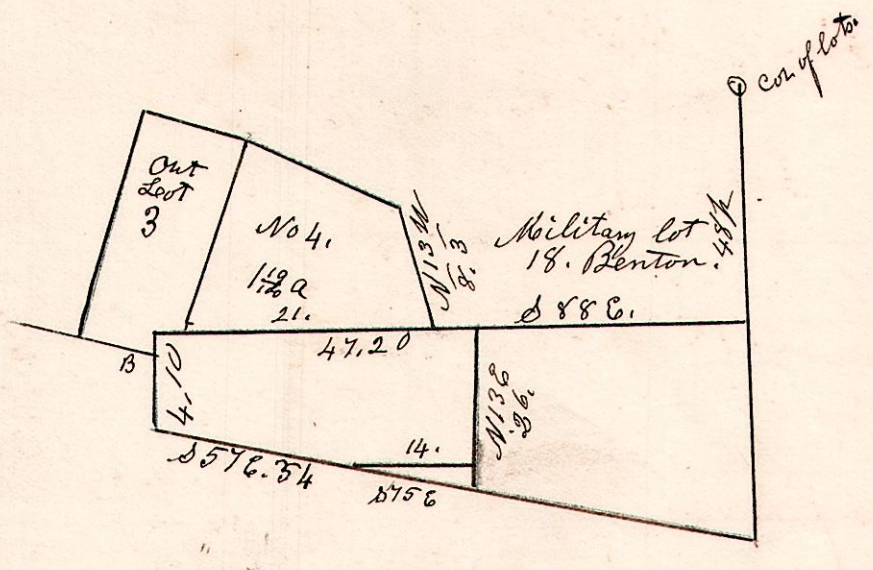


6.10.18 $\frac{4}{2}$

J. Ewing, Fr Weiler Survey,

Feb 5th 1870.

829



From B. S 57 E 34 p.
 S 75 E 14.
 N 13 E 26.

Feb 5th 1870

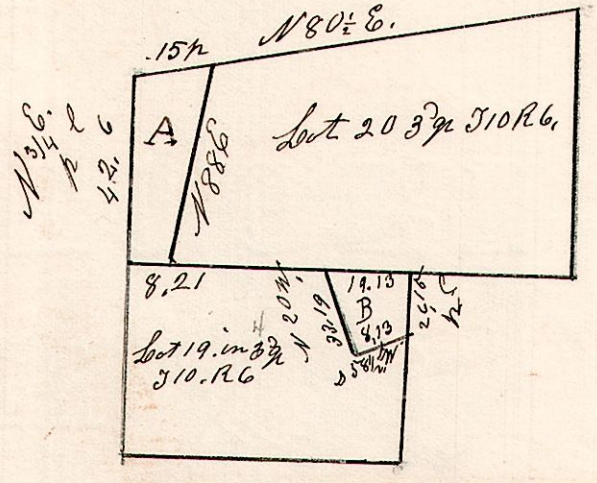
John Ewing.

Frederick Weiler.

6.10.20 $\frac{3}{2}$

July 2nd 1844.

830

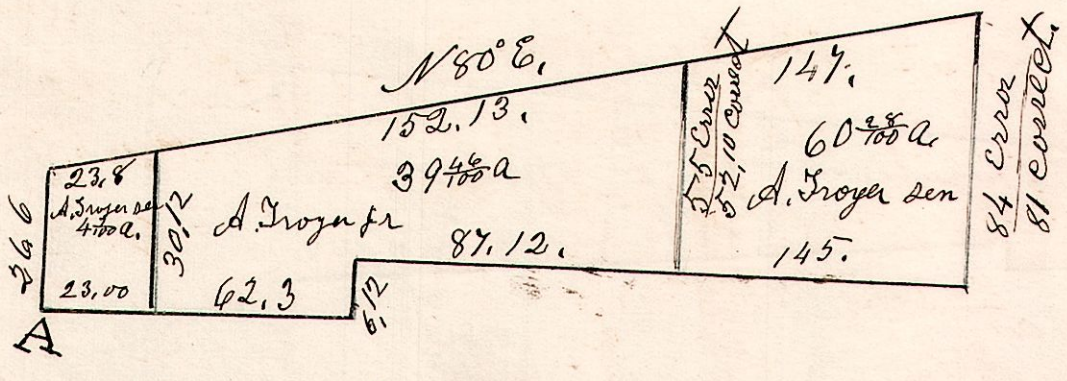


July 2nd 1844 Surveyed the 2 following
 pieces of land A, B:
 A is John Garmires $3 \frac{05}{100}$ a.
 B is Joshua Reeds $2 \frac{53}{100}$ a.

6.10.9 $\frac{30}{2}$

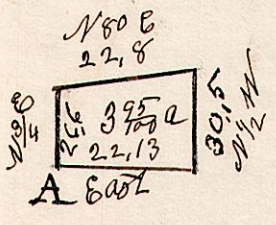
Lot 9, S 10. R 6 3rd q
 December 14th 1843 Divided the above lot
 into several pieces.

831



197
 152.13
 23.8
 322.93

4a. 59a - 60 acres.



November 3rd 1854 Surveyed this piece
 for Jacob Arnold
 W pt of lot 9 S 10. R 6. 3rd q.