

6. 10. 8 & 9.  $\frac{4}{2}$  gr. March 18<sup>th</sup> 1859.

Lots 8 & 9. 4<sup>th</sup> gr. S10. R6.

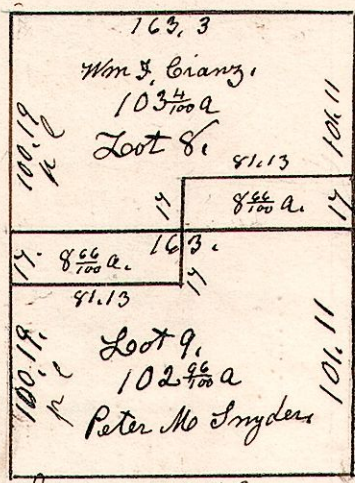
W. Oak 24 & 36 W. 11.

Elm 8 S 67 E 10.  
B. Oak 10 N 41 W 40.

W. Oak 30 S 5 E 4.  
Hickory 6 N 14 E 7.

W. Oak 10 N 11 E 25  
Maple 8 S 8 W 23

Ash 8 N 69 E 14  
Linnwood 48 S 79 W 412



Quaker ash 9 S 30 W 4.  
B. Oak 8 N 27 E 13.

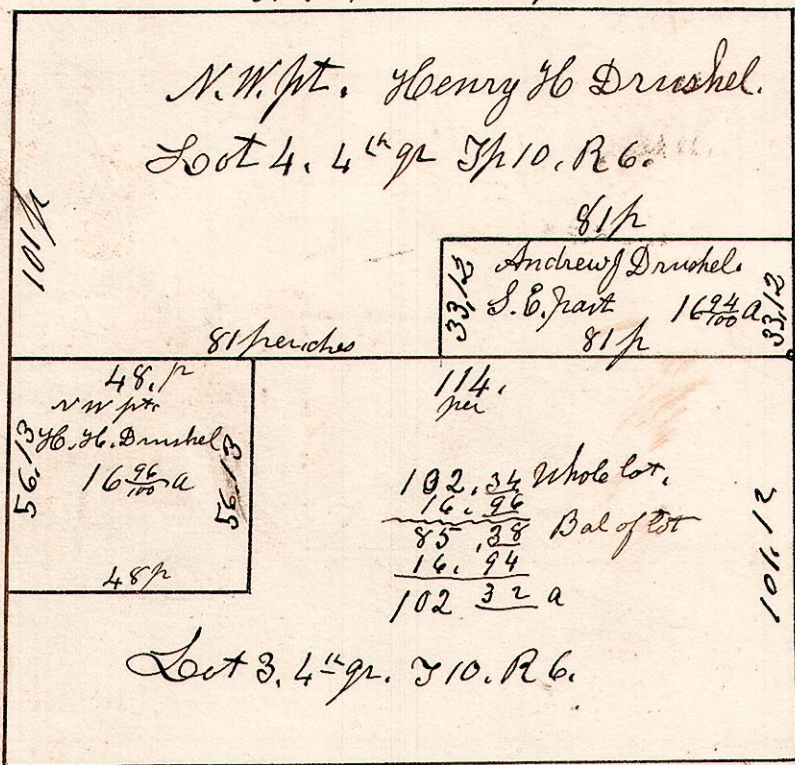
Quaker ash 12 S 49 W 58.  
Do 7 S 65 E 80.

6. 10. 3 & 4.  $\frac{4}{2}$  gr.

January 20<sup>th</sup> 1870. Surveyed the following.

Lots 3 & 4. 4<sup>th</sup> gr. S10. R6.

N 88 W. 161.9

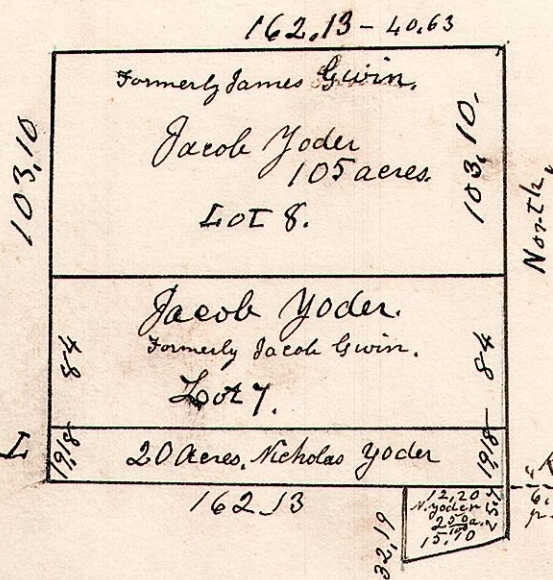


162  $\frac{16}{100}$  S 88 E.

6. 10. 7 & 8.  $\frac{3}{2}$  gr.

November 27<sup>th</sup> 1837.

Lots 7 & 8. in 3<sup>rd</sup> gr. S10 R6.



Chestnut 24 S 83 E 51  
W. Oak 13 S 38 W 23

part of  
Congress corner

K. Hickory 10 S 73 W 13.  
" Do 12 S 17 E 7.

Lots 4 & 5 N. W. Oak 36 S 54 W 23.  
" Do 20 S 13 E 23.