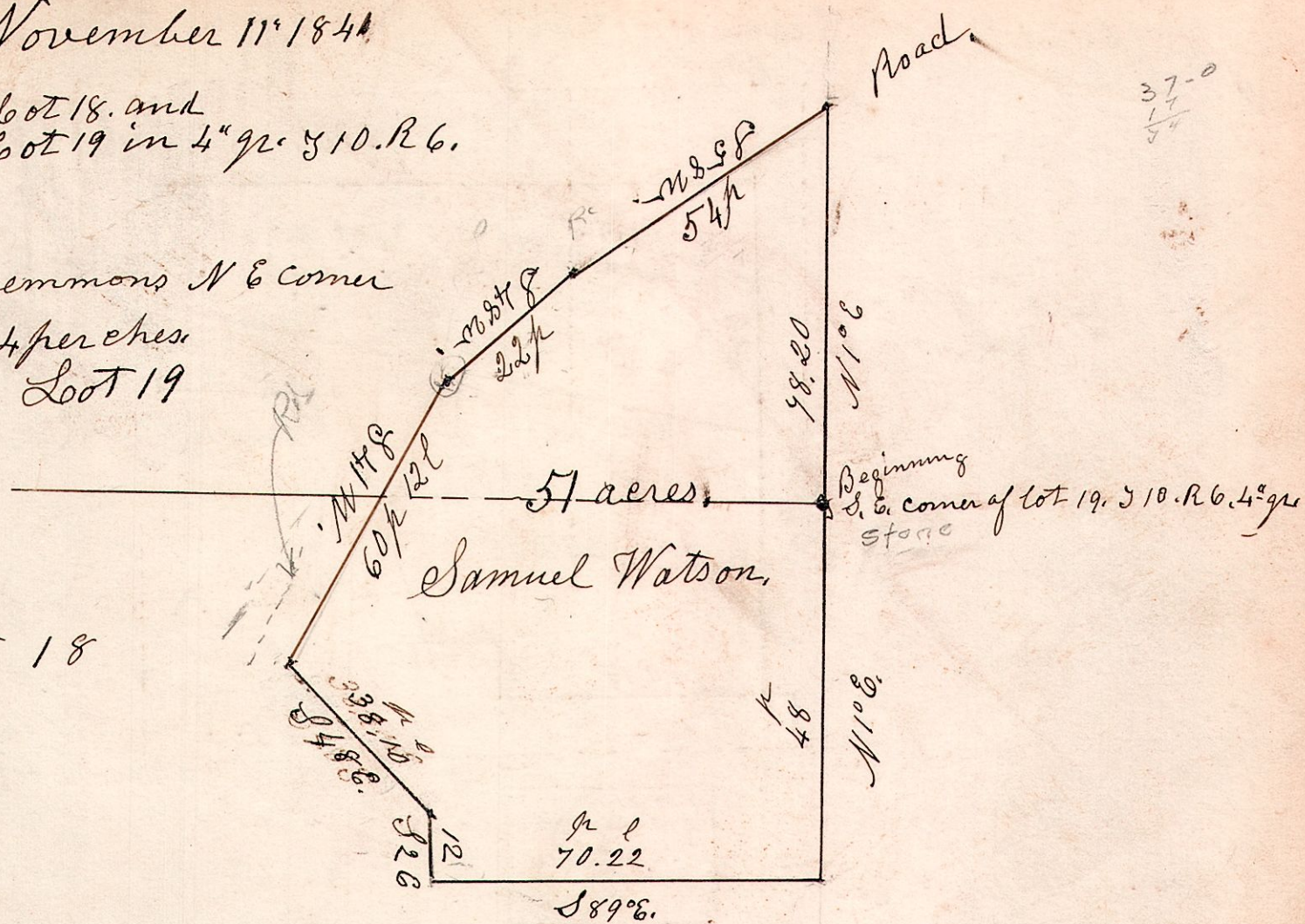


6. 10. 1848 & 19 ^{1/2}. November 11th 1841.

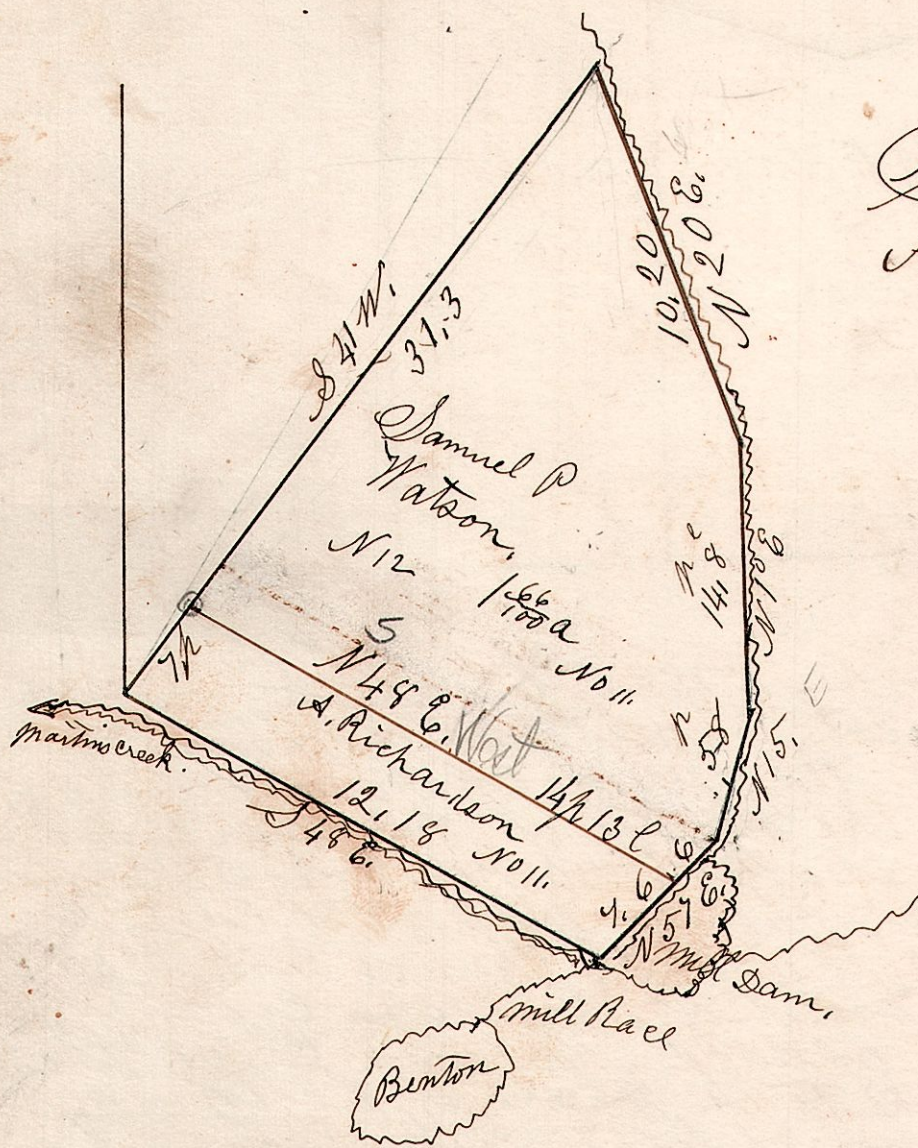
N. E. pt of Lot 18. and
S. E. pt of Lot 19 in 4th gr. S 10. R 6.

From Wm Lemmons N E corner
to our corner, 4 perches.
Nov 11th 1841. Lot 19

Lot 18



6. 10. 1848 & 19 ^{1/2}. June 4th 1852.



Samuel Watson pt of lots 18 & 19
Allen Richardson pt of lot 18.