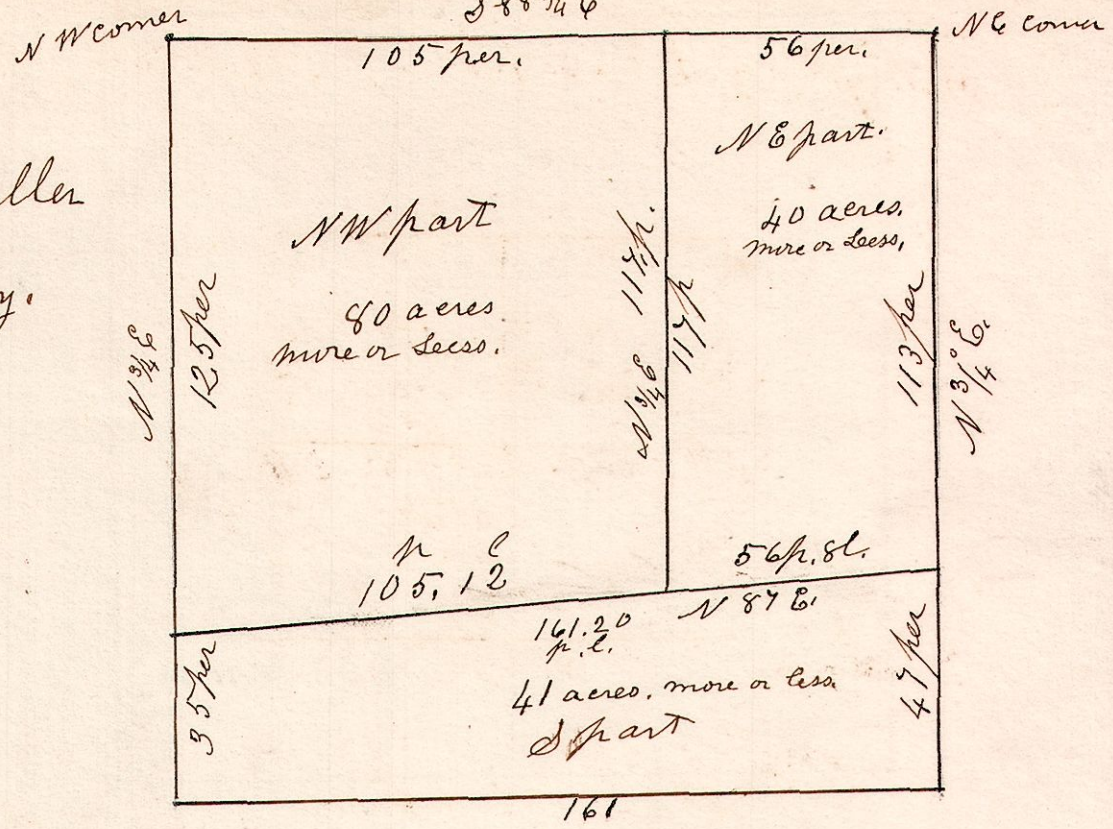


6. 9. 5. ⁴¹/₇₂ December 31st 1856.
 Lot No 5, in 4th q^r of R 5. C.W.R School Land.

796

David D Miller
 From
 Manilus S. Rudy.



Lot number 5, in 4th q^r of R 6. 4th q^r
 Connecticut Western Reserve School Lands,
 Dec 31st 1856.

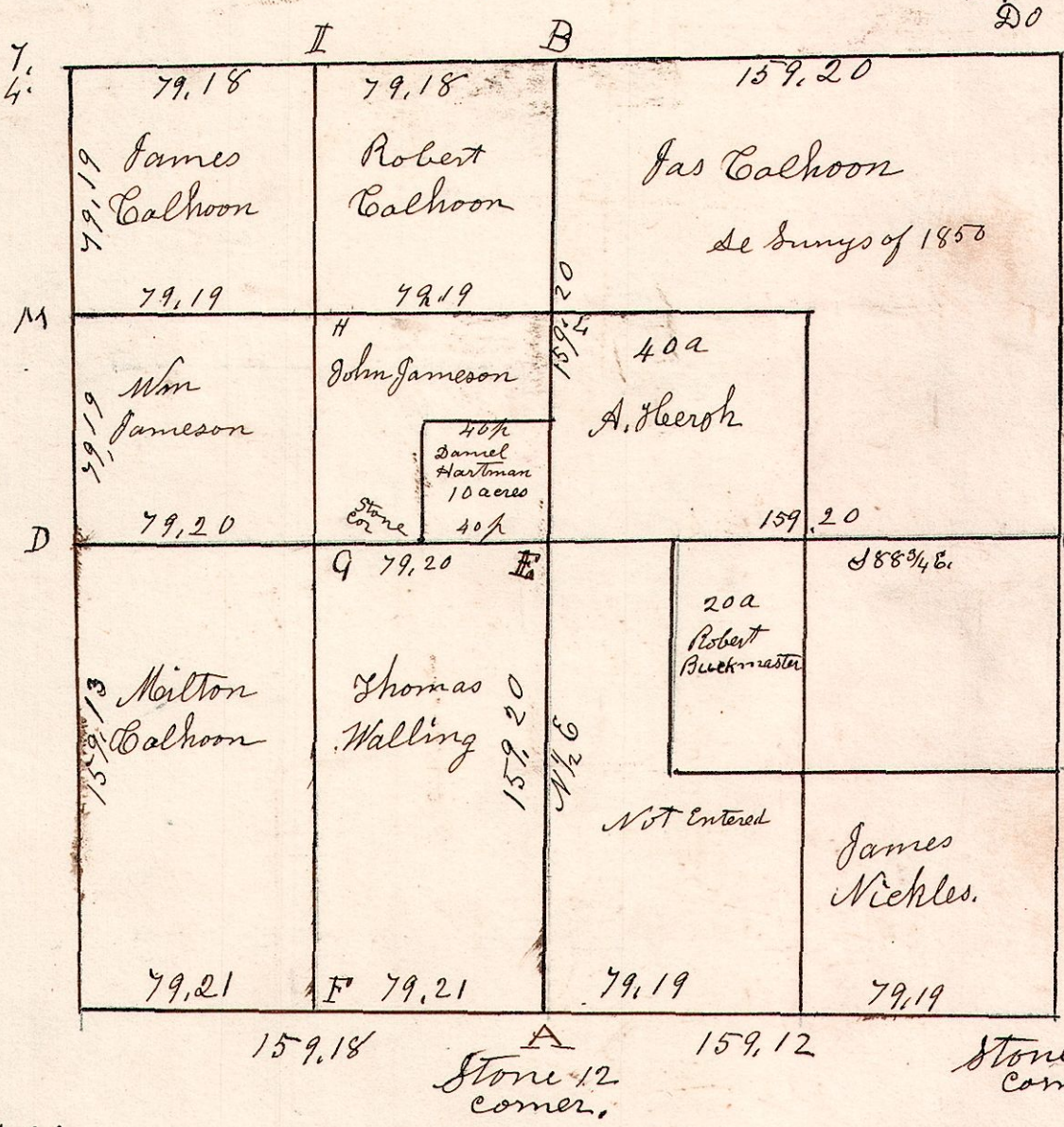
6. 9. 24. April 4th 1833, Surveyed Section 24, in T 9. of R 6.
 in the following manner and for the following
 persons.

797

W Oak 14 S 52 W 7
 Maple 16 N 46 24

W Oak 20 S 85 E 16
 Do 24 S 50 W 33

W Oak 24 N 41 1/2 E 33
 Do 34 S 16 W 37



Gum 12 N 18 E 16.
 Maple 16 S 75 E 26.

- F W Oak 20 N 10 W 20.
- " Gum 12 S 54 E 8.
- G Gum 18 S 75 E 45.
- " Ash 18 S 70 W 16 1/2
- H Stone 15 the corner
- " Maple 15 N 78 E 15
- " Dogwood 6 N 37 W 8
- I W Walnut 18 N 12 E 20
- " W Oak 40 S 42 W 43
- L W Oak 30 S 82 W 37
- " Beech 8 N 77 E 14
- M Gum 12 S 66 W 20
- " Chestnut 8 S 77 E 45

- E Gum 18 N 62 E 13
- " Ironwood 12 S 46 W 15
- A Dogwood 6 S 14 W 18
- " Chestnut 6 S 68 E 7

March 18th 1854
 Surveyed the South side of sec, Dist 320th
 of line F & G Dist 160 per N and S.