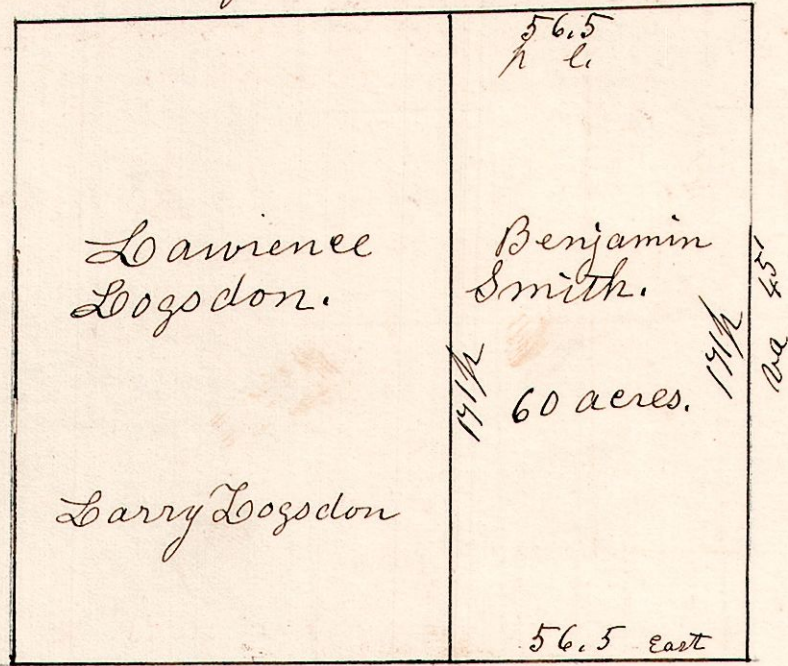


6. 9. 23. $\frac{4}{2}$ School Land C.W.R.

September 28th 1832, Surveyed 60 acres which is situated on the east side of lot No 23. in the 4th gr. in the 9th Township and 6th Range of the Western Reserve School Land, for Benjamin Smith.

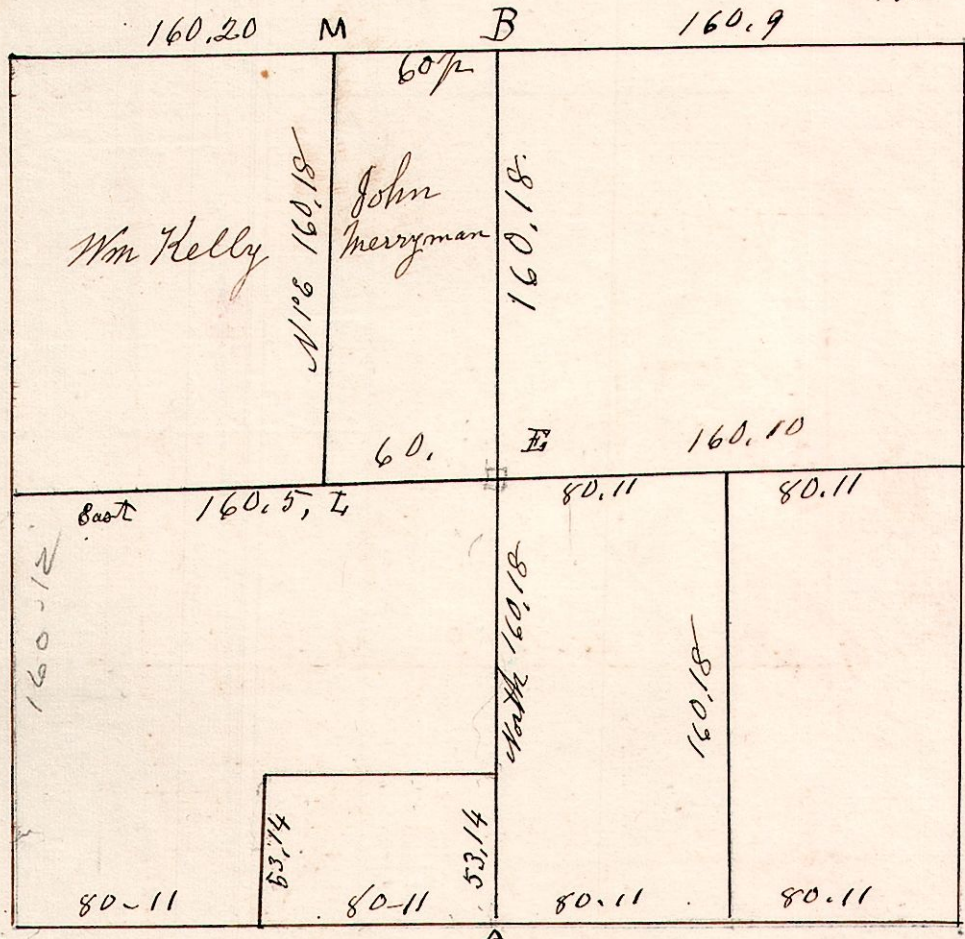
779



6. 8. 9. February 11th 1836, Surveyed Section No. 9, in T 8. Range 6.

Beech 20 N 66 1/2 W 20. Hickory 13 S 37 W 3.
Do 16 S 55 E 34. W. Oak 30 N 54 E 10.

Maple 14 N 13 E 12.
W. Oak 20 S 55 W 15.



Gum 4 540 E 15.
Beech 5 North 5.

W. Oak 20 N 24 E 39.
Do 16 S 4 W 57

W Oak 40 N 55 E 19.
Hickory 10 S 75 W 15.

N 4 S. Dist 321.15

Maple 12 S 85 E 22.
W. Oak 40 S 57 W 10.

E. Beech 9 N 51 W 21.
" Maple 8 South 7.

Line "I, M." Surveyed
March 12th 1854.