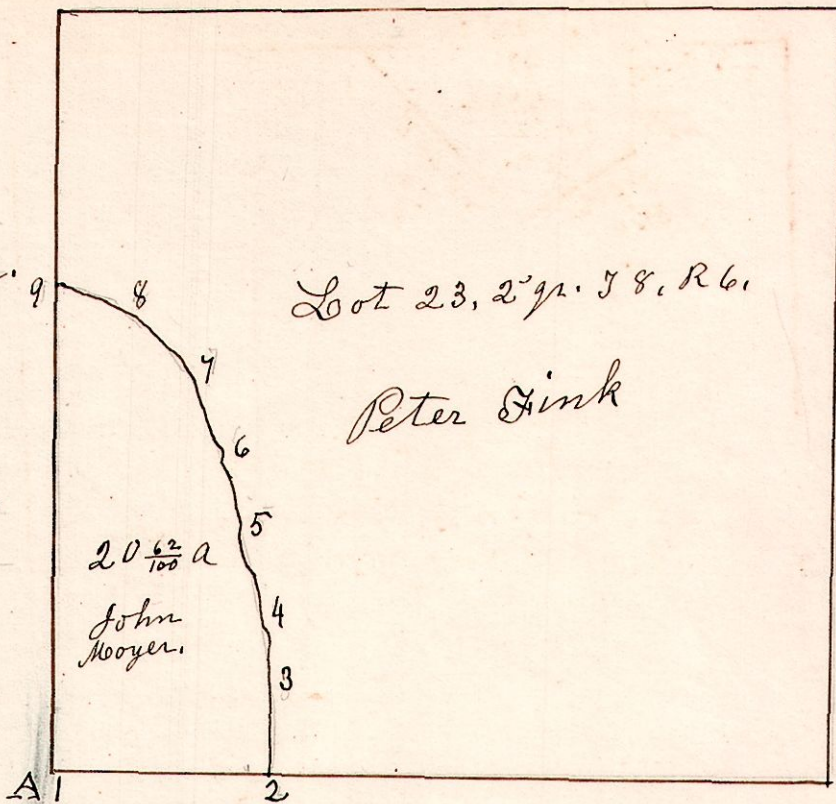


6, 8, 23. ³⁰/₄ August 11th 1848.

770

	A l	ch l.
1	S 89 E 32.10 =	8.10
2	N 78 24.00	6.00
3	N 25 E 24.00	6.00
4	N 11 1/2 W 24.00	6.00
5	N 45 W 12.00	3.00
6	N 36 W 8.00	2.00
7	N 66 W 20.00	5.00
8	N 78 W 8.10	2.10
9	S 1/2 W 93.10	23.35

50 line on west side of said lot.



A. W. Dak 15. N 33 1/2 W 50.
" Do 17. S 27 1/2 E 56.

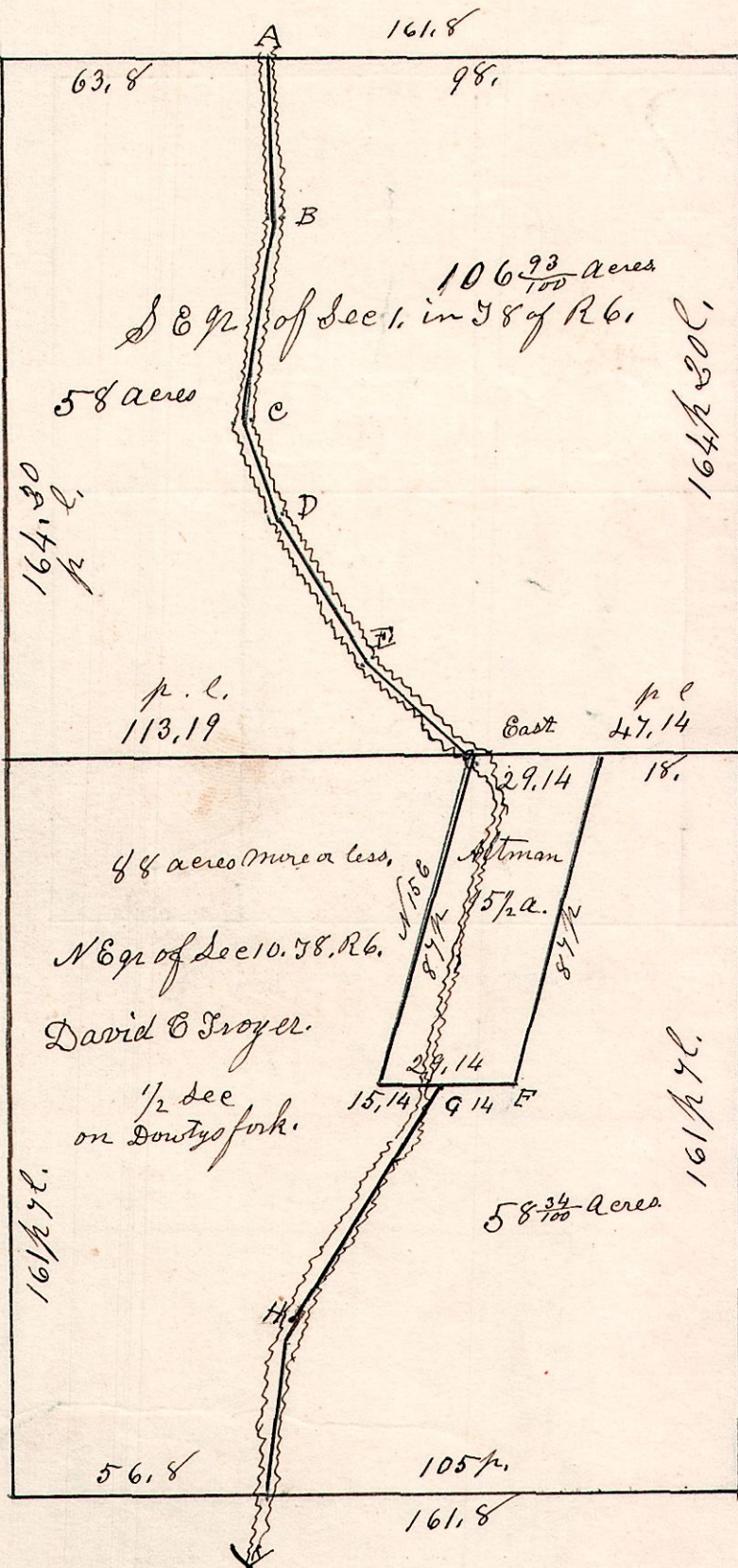
Lot 23, Sec 2, T 8, R 6.
August 11th 1848. Surveyed the S.W. part for John Mooyer.

6, 8, 10. February 28th 1838.

771

- A, S 70 W - 40.
- B, S 24 W - 59.
- C, S 28 E - 16.
- D, S 39 1/2 E - 60.
- E, S 71 E - 34 to Altman's NW Corner.

NB. The line from A to Altman's NW corner runs in the creek, Douthy's Fork.



Section Corner.
W. Dak 9. S 21 W 30.
13, Dak 12. N 15 W 7.

On S. quarter,
F. West 14 from Altman's corner
G. S 47 1/2 W 60.
H. S 9 1/2 W 33 to line.

The east side of each quarter is Elias Godew.