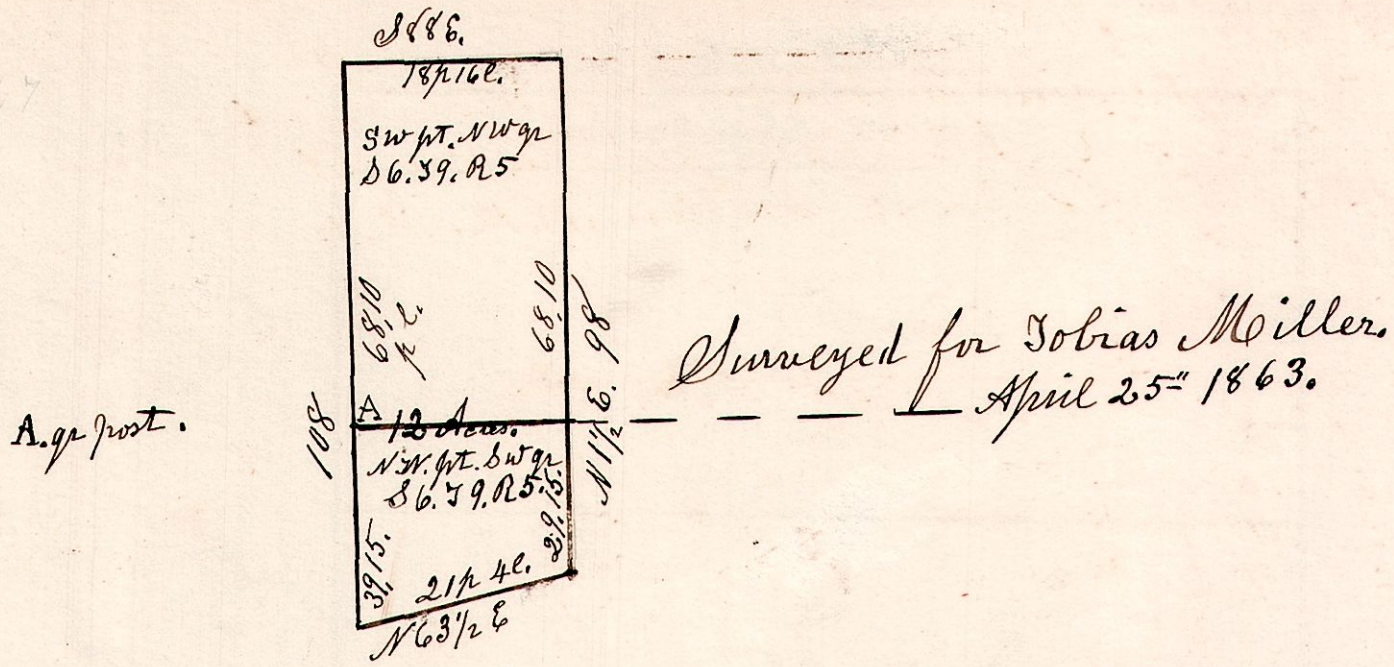
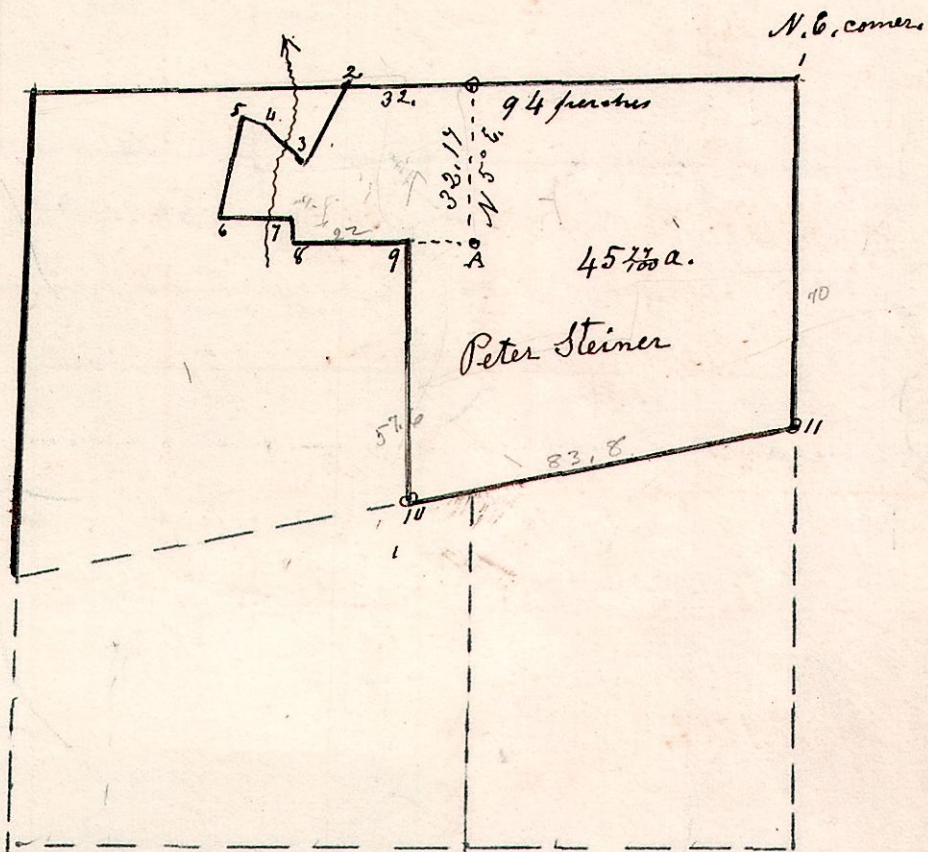


5.9.6. April 25th 1863.



5.9.7. June 21st 1855.

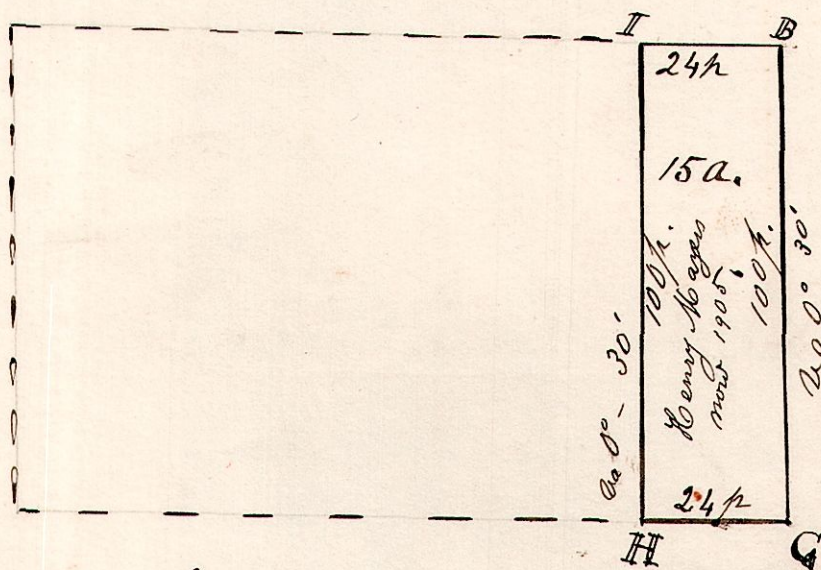
- N. E. Corner. *h*
- 1 N 89 1/2 W 94. 155
 - 2 S 29 W 19 313.5
 - 3 N 42 3/4 W 12. 110 205. 26
 - 4 N 72 W 4. 1 66. 66
 - 5 S 9 1/2 W 21. 4 349. 14
 - 6 East 14. 20 244. 2
 - 7 S 96 4. 17 77. 22
 - 8 S 89 1/2 E 22. 363
 - 9 S 1/2 W 57. 6 944. 40
 - 10 N 77 E 83. 8 1374. 78
 - 11 N 1/2 E 70. 1155
- N 67 1/2 W in 1st 2nd 9. R. 5.
OT W R School Land.



- Wheaton Survey.
From A
- N 5° E 32. 17
 - West 32.
 - S 29 W 19
 - N 42 3/4 W 12. 11
 - N 72 W 4. 1
 - S 9 1/2 W 21. 4
 - East 14. 20
 - S 96 4. 17
 - S 89 E 38 to A

Connect the two Surveys into one tract,
and make plat & description for Deed.

5.9.39.30. February 4th 1826.



B	W. Oak	12	N 45 1/2 W	44.
B	Hickory	10	N 39 E	16.
I	Post		the Corner.	
H	Post		the Corner.	
C	Post		the Corner.	

Surveyed the above February 4th 1826.
Being the East part of Lot 39. in Township 9.
of Range 5. and Section 3 (Military)
of which is a correct plat of the same.
Samuel Robinson
Co Surveyor.