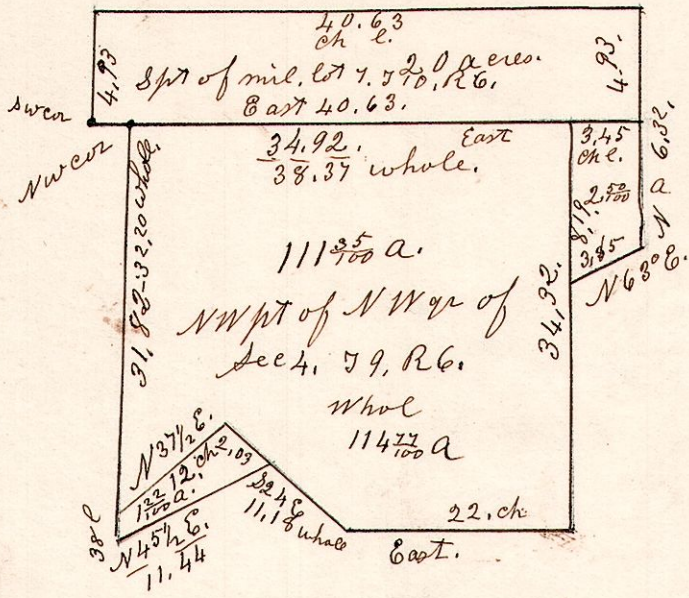


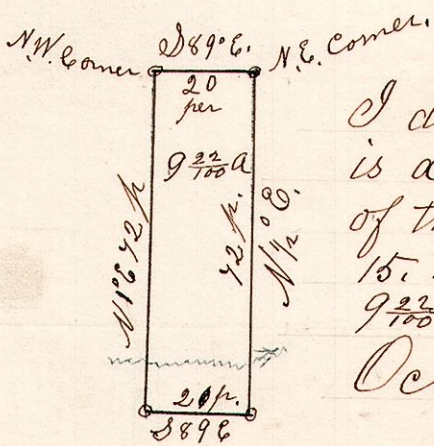
6.9.4. NW pt. NW qr Sec 4. T9. R6
& Spt Military lot No 7.3^o gr. S 10. R6.

Jacob Yoder
land.



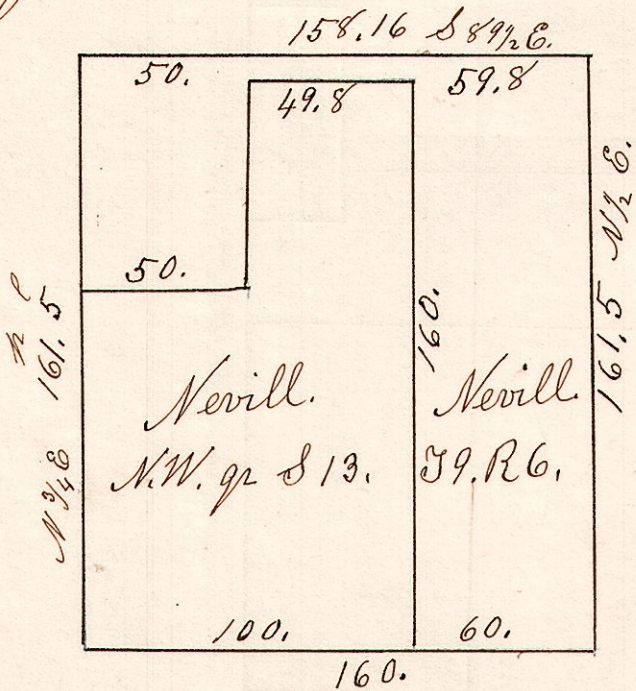
6.9.15. Npt NW fraction.

October 15th 1856.
Robert Calhoun

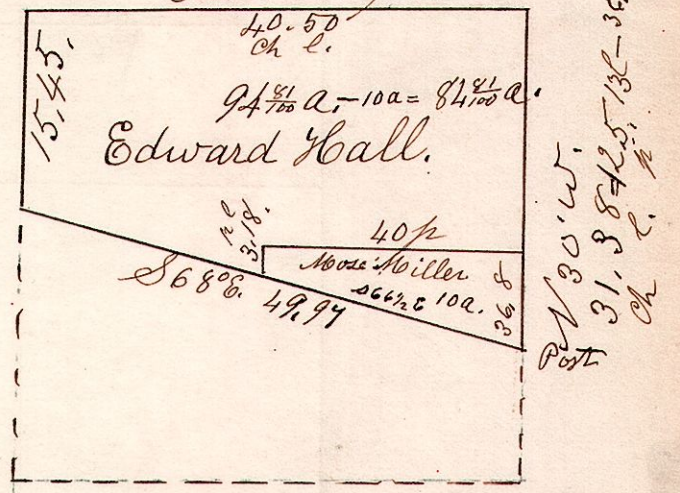


I do hereby certify that the above is a correct plat of the north part of the north west quarter of section 15. in Township 9. of Range 6. Containing 9 3/4 acres.
October 15th 1856, Samuel Robinson
Surveyor.

6.9.13. March 18th 1847.
N.W. qr. of S 13. S 9. R6.



6.9.6. ^{lot} Jan 8th 1835.
Surveyed the N part of lot 6. in the 1st q. in T 9. of R 6. of Western Reserve School Land. East 162 per.



40.63
38.37
2.26