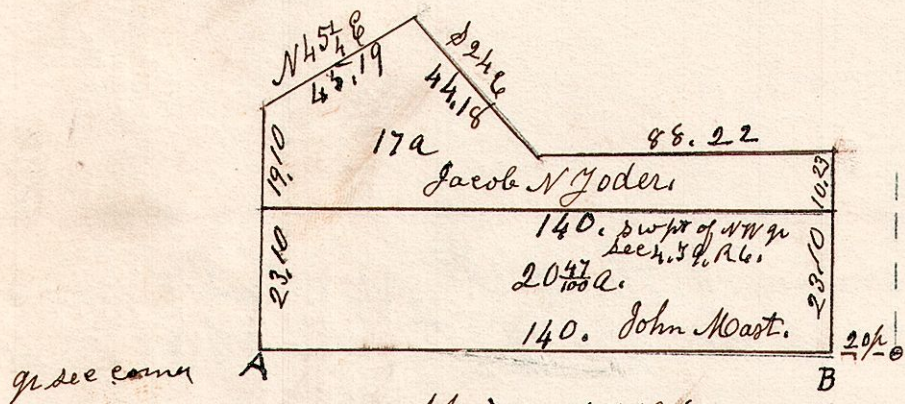
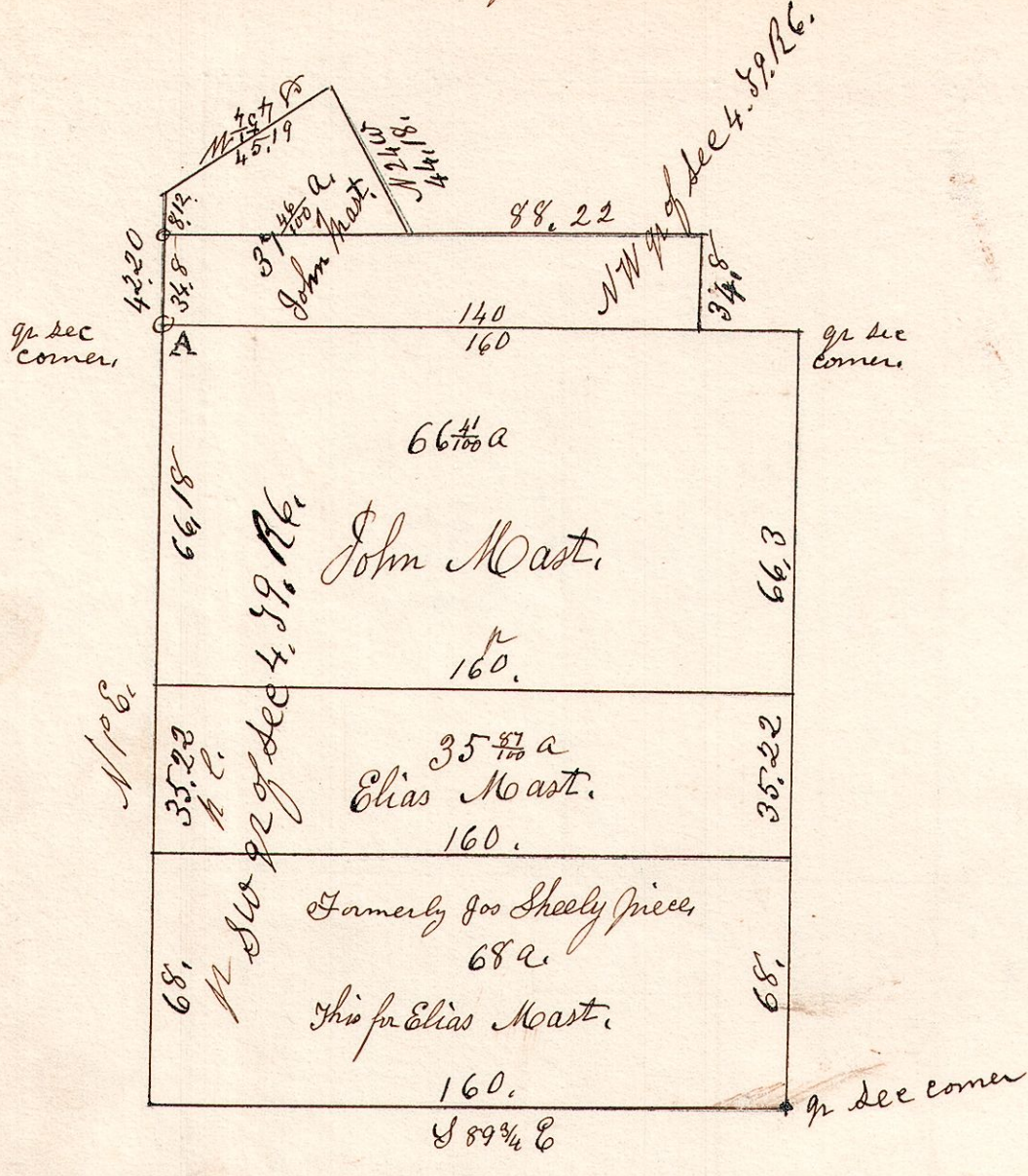


6.9.4. $\frac{1}{2}$ of $\frac{1}{4}$ of $\frac{1}{4}$

October 12th 1856. & April 17th 1861.

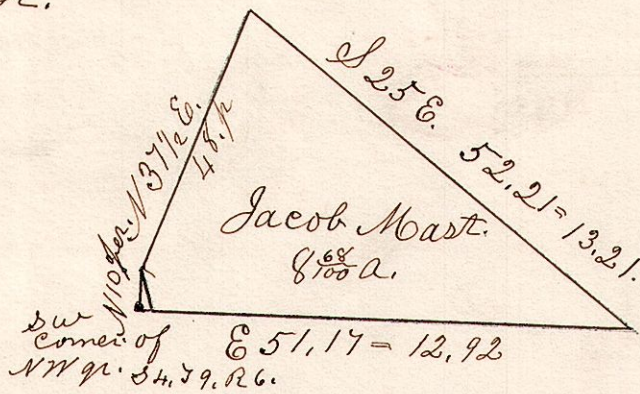


April 17th 1861.

6.9.4.

Nov 20th 1832. Surveyed the following piece of land Situated in the SW part of the NW $\frac{1}{4}$ of Sec 4. 59. R6. for John Quinn.

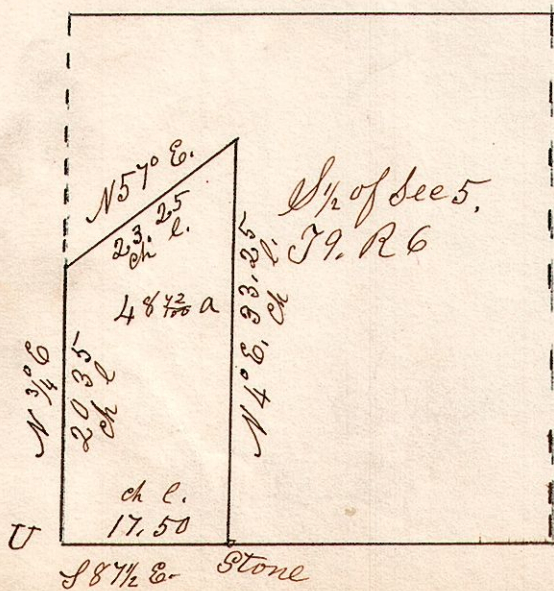
Jacob Mast.



6.9.5. $\frac{1}{2}$

January 12th 1857.

Jacob Yoder Land.



U W. Oak 36. 8748 5.
Do 26. 176. 50.