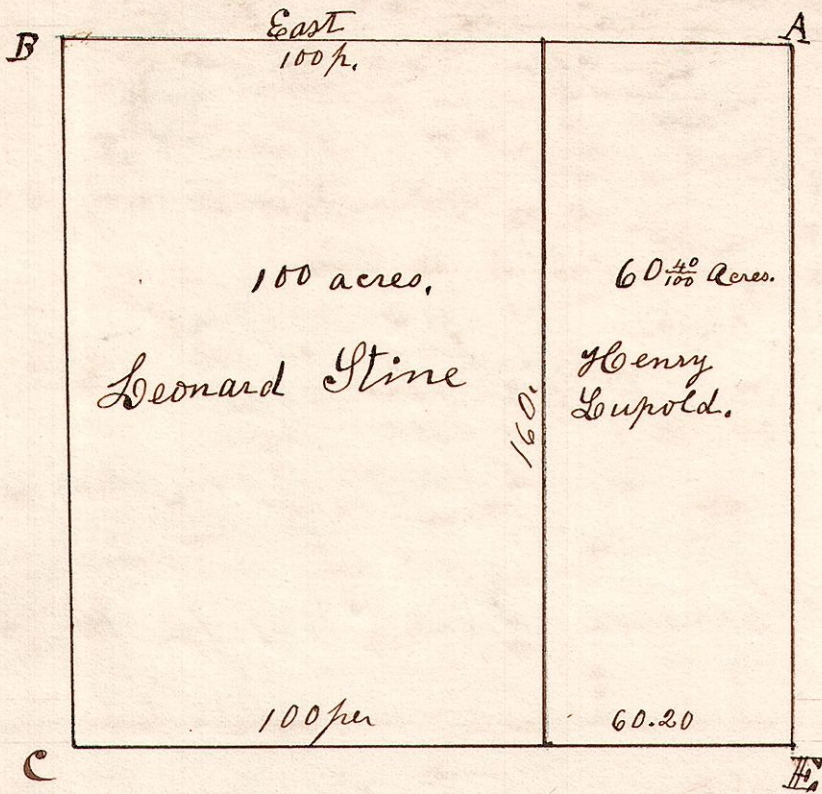


6.9.7. April 2 1853. Surveyed NW q. S7. T9. R6.

W. Oak 30 N64 E 11.  
Maple 18 West 17.

Sugar 543 W. 39.  
W. Ash 20 S79 E 36.

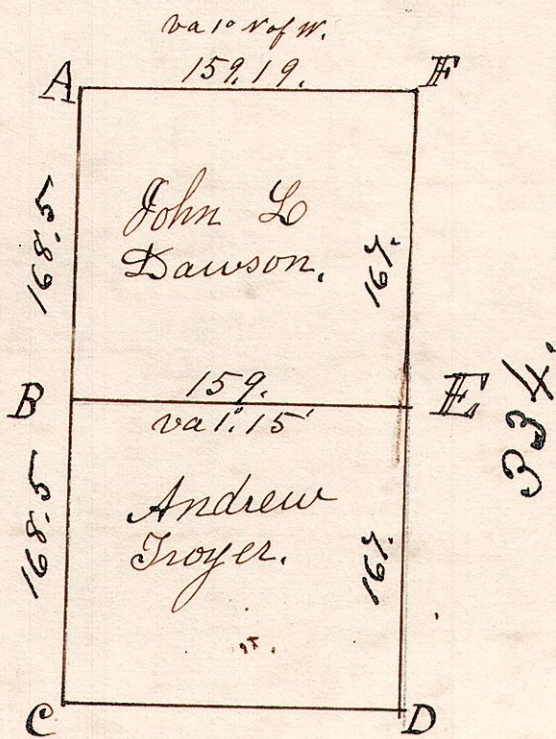


B. Oak 13 N22 E 7 1/2.  
W. Oak 16 S45 E 28

W. Oak 20 S87 1/2 E 32 1/2.  
Beech 15 S65 E 47.

6.9.3. W 1/2. September 24 1829. W 1/2 Sec 3. T9. R6.

|   |          |    |       |    |
|---|----------|----|-------|----|
| A | Hickory  | 16 | S3W   | 31 |
| " | W. Oak   | 12 | N65W  | 6  |
| B | Chestnut | 30 | South | 24 |
| " | W Oak    | 18 | N56E  | 24 |
| C | Beech    | 10 | N33E  | 16 |
| " | Do       | 10 | S61W  | 8  |
| D | Hickory  | 12 | S58E  | 20 |
| " | R. Oak   | 36 | S78W  | 49 |
| E | W. Oak   | 36 | S20W  | 27 |
| " | Do       | 16 | N73W  | 20 |
| F | Hickory  | 25 | S35E  | 37 |
| " | W. Oak   | 15 | S5W   | 33 |



Surveyed the Dawson q for  
Christian Mast Dec 31 1842.

6.8.1. S.E. q of Sec. 58. R6.

