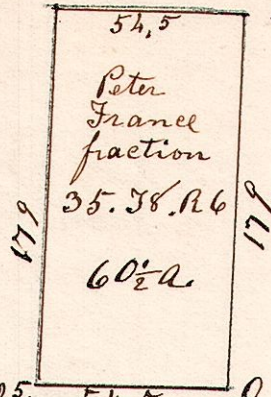


6.8.35. $\frac{3}{4}$ November 22 1838.

N. Oak 16 S 32 E 21.
Do 5 N 20 E 12

N. Oak 10 N 47 1/2 E 8.
Do 7 N 79 W 26.

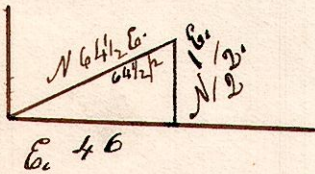
November 22 1838.
This is the first survey made
under authority of my Commission.
Fractional lot 35, in 3rd q. 18. R. 6.



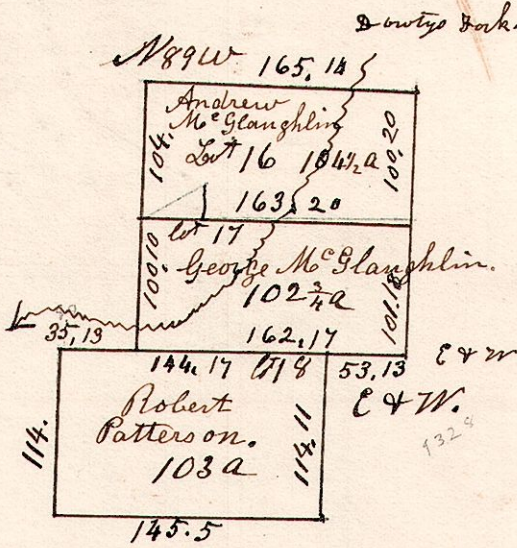
N. Oak 48 N 77 1/2 W 25.
Do 40 N 64 1/2 E 25.
B. Oak 24 S 64 W 43.
Do 8 N 12 W 19

6.8.16.17.18. 3rd q. 18. R. 6.

November 23 1838.
Surveyed the above lots.



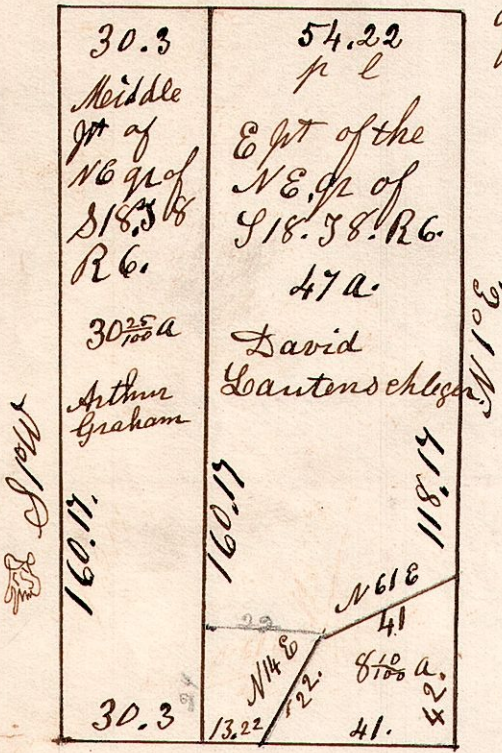
This small piece taken out of
the southwest corner for of lot 16.
George McGlaughlin



6.8.18. March 13 1871.

Ept & mid pt. of NE q. S 18. 18. R. 6.

N 88 W. N corner of q.



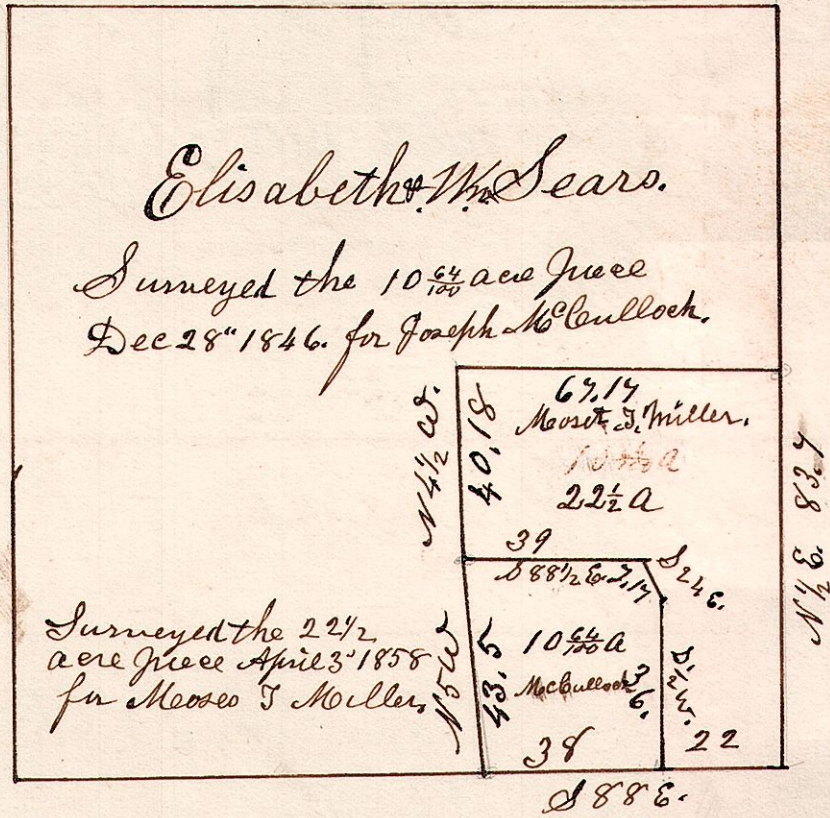
8 7/8 a piece surveyed by Bill Williams
1825

6.9.9. 1st q. December 28 1846.

Lot 9. 1st q. T 9. R. 6. Ct. W. R. School lands.

Elisabeth W. Sears.

Surveyed the 10 5/8 acre piece
Dec 28 1846. for Joseph McCulloch.



Surveyed the 2 1/2
acre piece April 3 1858
for Morris J. Miller

1886.