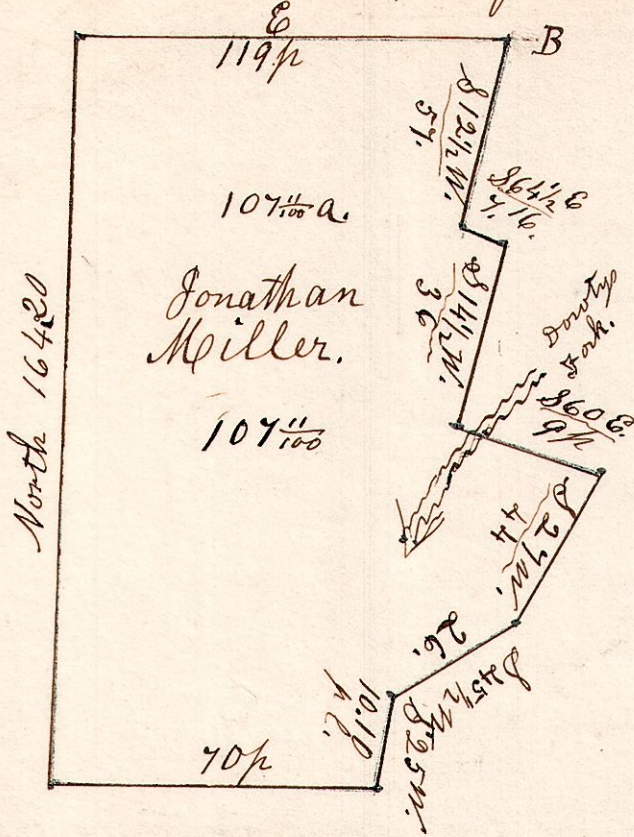


6. 8. 1. N.E.

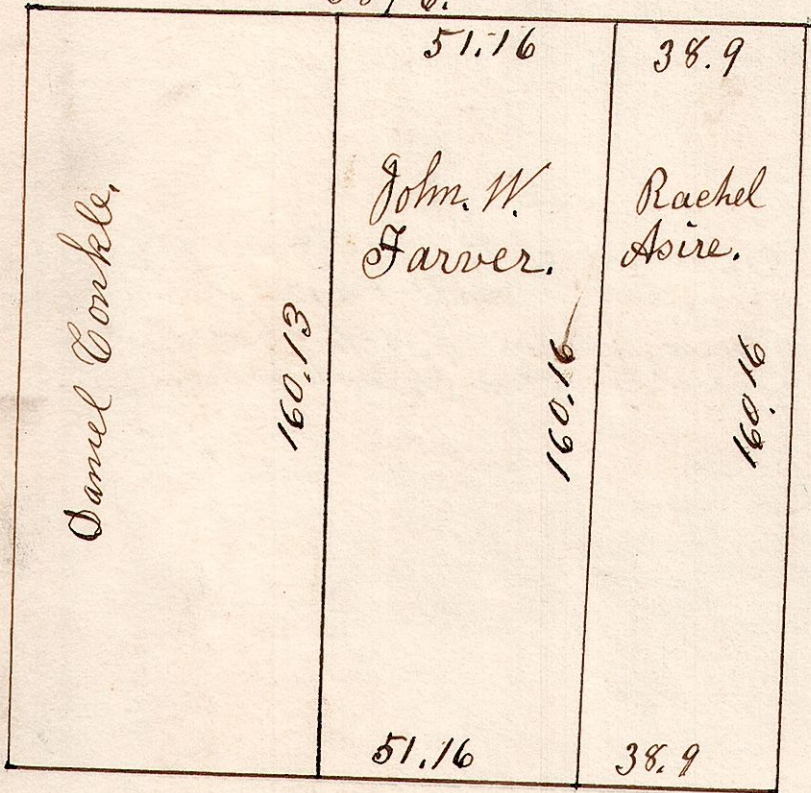
Nov 14<sup>th</sup> 1839; Surveyed the W pt of the N.E. qr of S. 1. Sp 8. R. 6.



		r	l
1	East	29	75
B	S 12 1/2 W	14	25
3	S 64 1/2 E	1	91
4	S 14 1/2 W	9	00
5	S 60 E	2	25
6	S 27 W	11	00
7	S 45 1/2 W	6	50
8	S 25 W	2	60
9	West	17	50
10	North	41	20

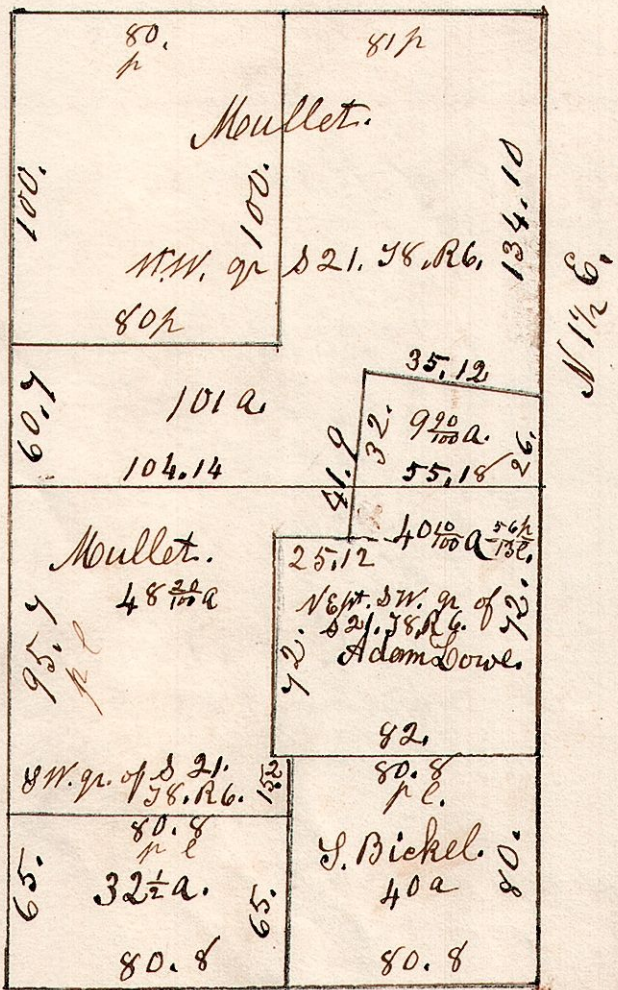
6. 8. 19. N.E.

October 13<sup>th</sup> 1869. Sec 19. T 8. R 6. N.E. 88 9/16.



6. 8. 21. W 1/2.

Feb 19<sup>th</sup> 1869. W 1/2 of Sec 21. T 8. R 6.



6. 8. 19.

Nov 12<sup>th</sup> 1839. S 1/2 of S 19. T 8. R 6.

