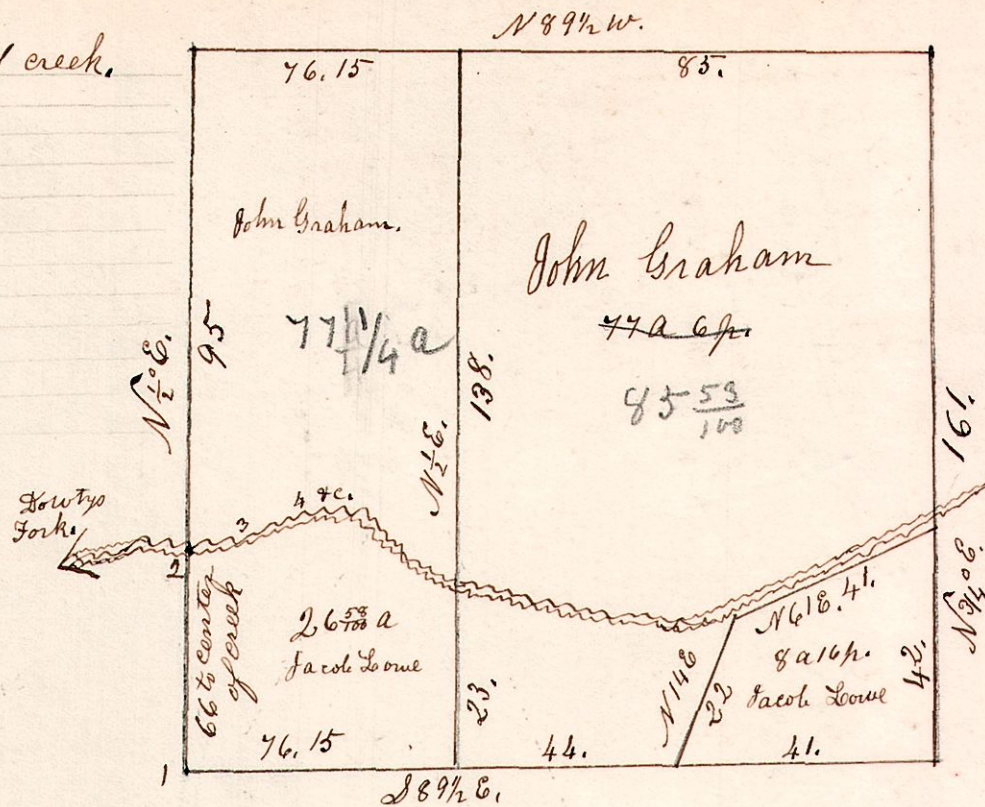


6. 8. 18. ^{no} gr.

April 20th 1853.

Sec 18. T8. R6. N & gr.

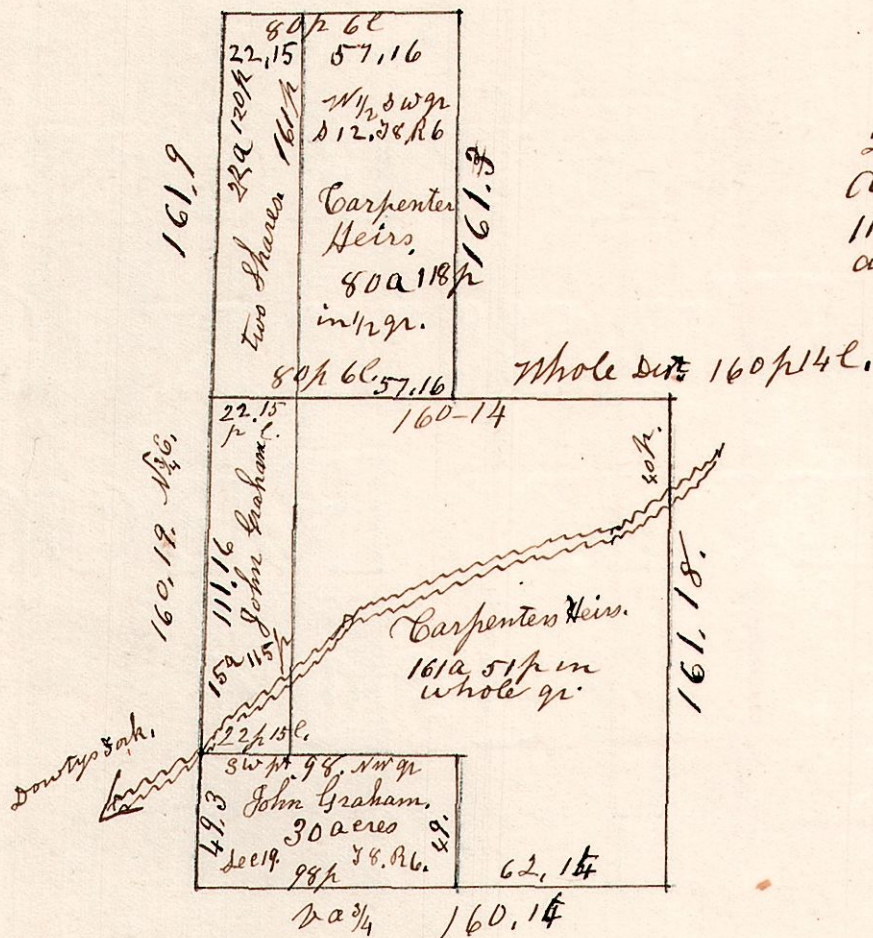
2 S 75 E. 10.12. up the center of creek.
 3 S 37 E 8.00
 4 S 82 E 7.00
 5 N 60 E 14.00
 6 N 64 E 7.00
 7 S 69 E 9.00
 8 S 26 E 7.00
 9 S 54 1/2 E 12.00
 10 S 25 E 28.00
 11 S 49 E 3.13



Surveyed the W & T of N & gr. of Sec 18. in T8. of Range 6. April 20th 1853.

6. 8. 12 & 19.

October 31st 1843. W 1/2 of S.W. gr of T12. T8. R6.
 N.W. gr of T19. T8. R6. Except 30 acres in S.W. corner of gr.

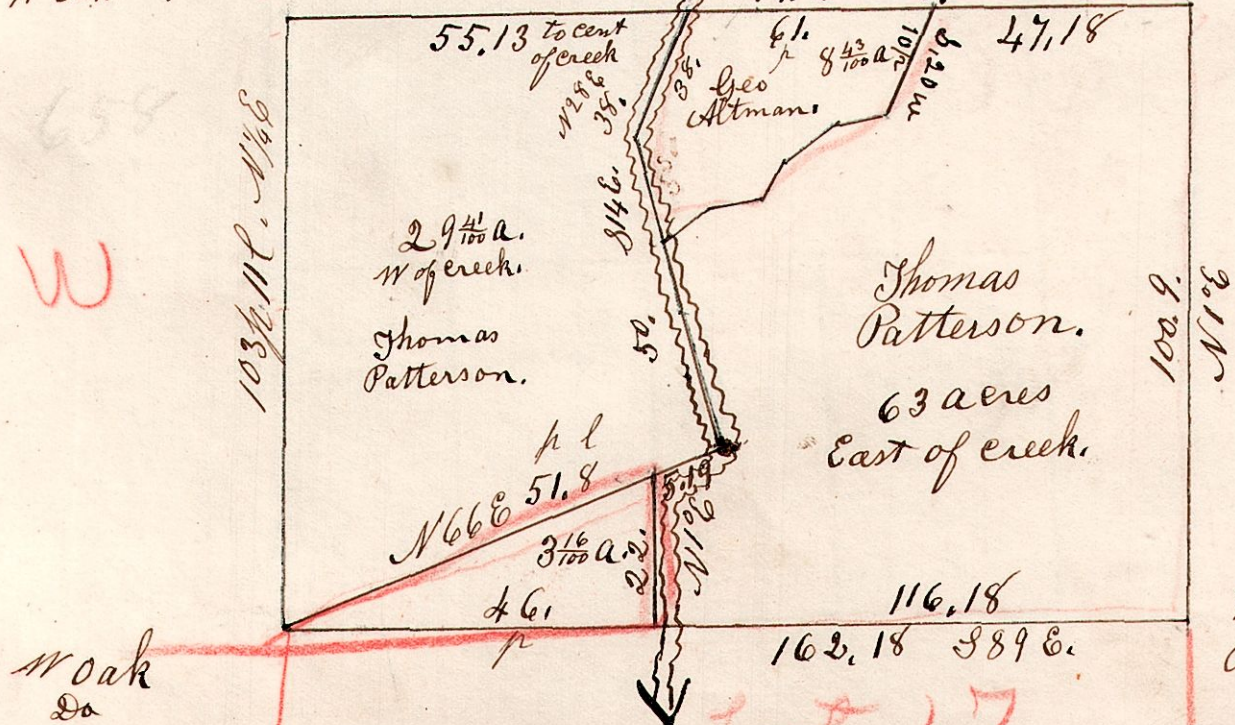


212 acres of the following described land owned by 11 heirs, which will be 19 acres and 43 perches to each share.

6. 8. 16. ^{3d} gr. April 9th 1867. Lot No 16 in the 3^d gr of T8. of Range 6.

Hickory 12 S 62 W 14
 W Oak 4 N 59 1/2 E 20

W Oak 7 S 72 1/2 E 35
 Do 5 S 60 W 6



- 1 S 20 W 10.00
- 2 N 89 W 12.00
- 3 S 74 W 31.00
- 4 S 43 W 13.00
- 5 S 59 W 11.00
- 6 S 32 W 16.00
- 7 N 16 W 20.00
- 8 N 29 E 38.00
- 9 S 88 E 61.00 To place of beginning containing 8 a 28 p. more or less.

W Oak 5 N 21 W 21.
 Cherry 7 S 30 W 17.

63 29 41
 9 8 41
 9 3 10 1/2
 9 5

W from re cor fell 18 E S of cor.