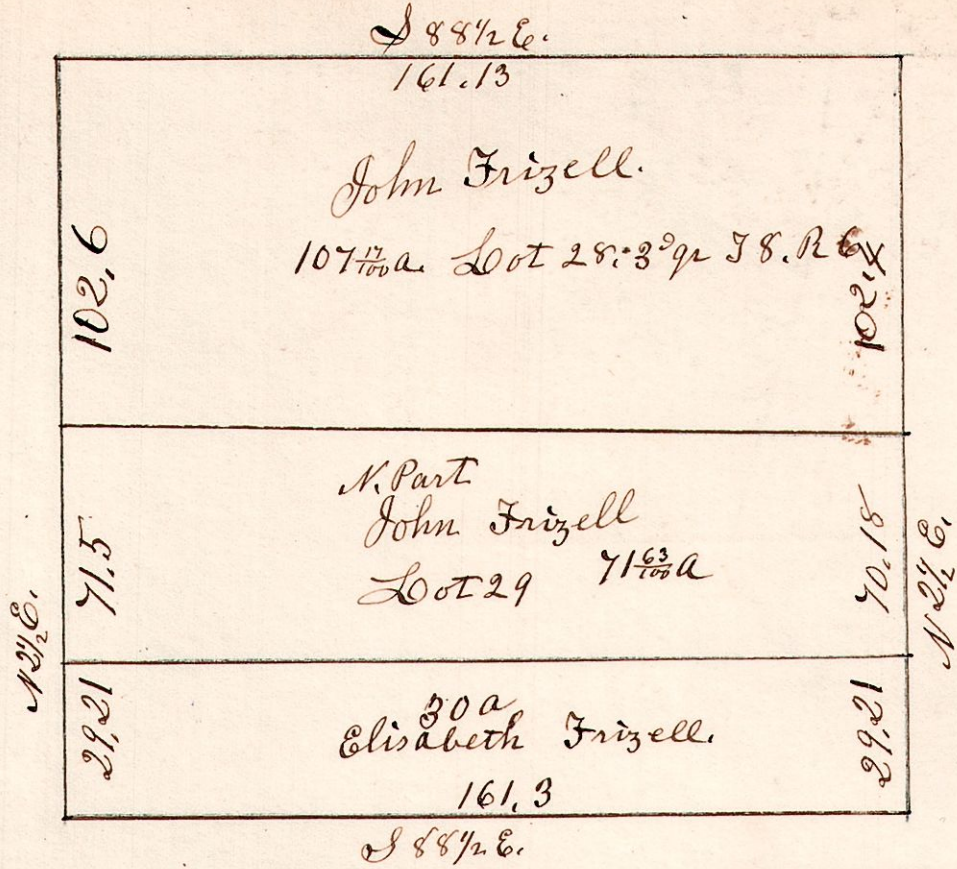


6. 8. 27 2^d gr.

Lots 28+29, 3^d gr. 58. R. 6.

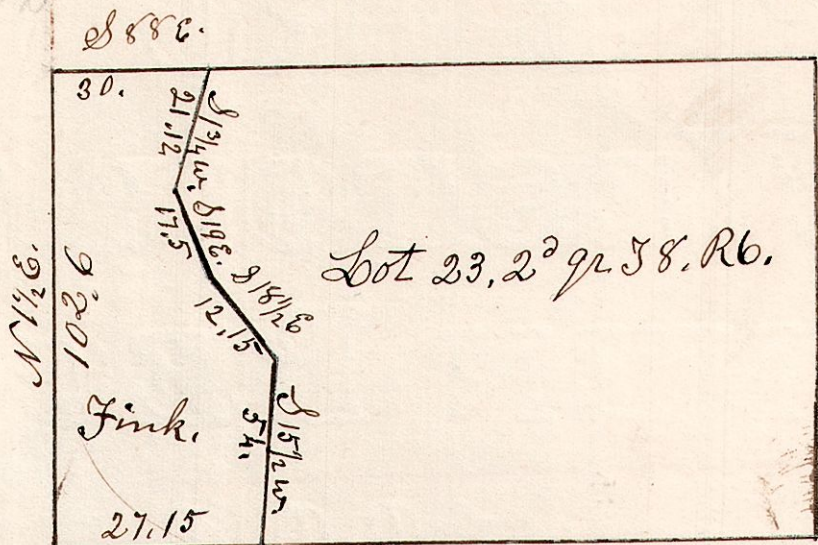
649



6. 8. 23. 2^d gr.

April 10th 1869.

650



S.W. Corner of lot 23. W. Oak 15 N 33 1/2 W 50.
 " " " Do 17 S 27 1/2 E 56.
 N.W. " " W. Oak 12 N 25 1/2 W 8.
 " " Maple 7 N 87 1/2 E 14.

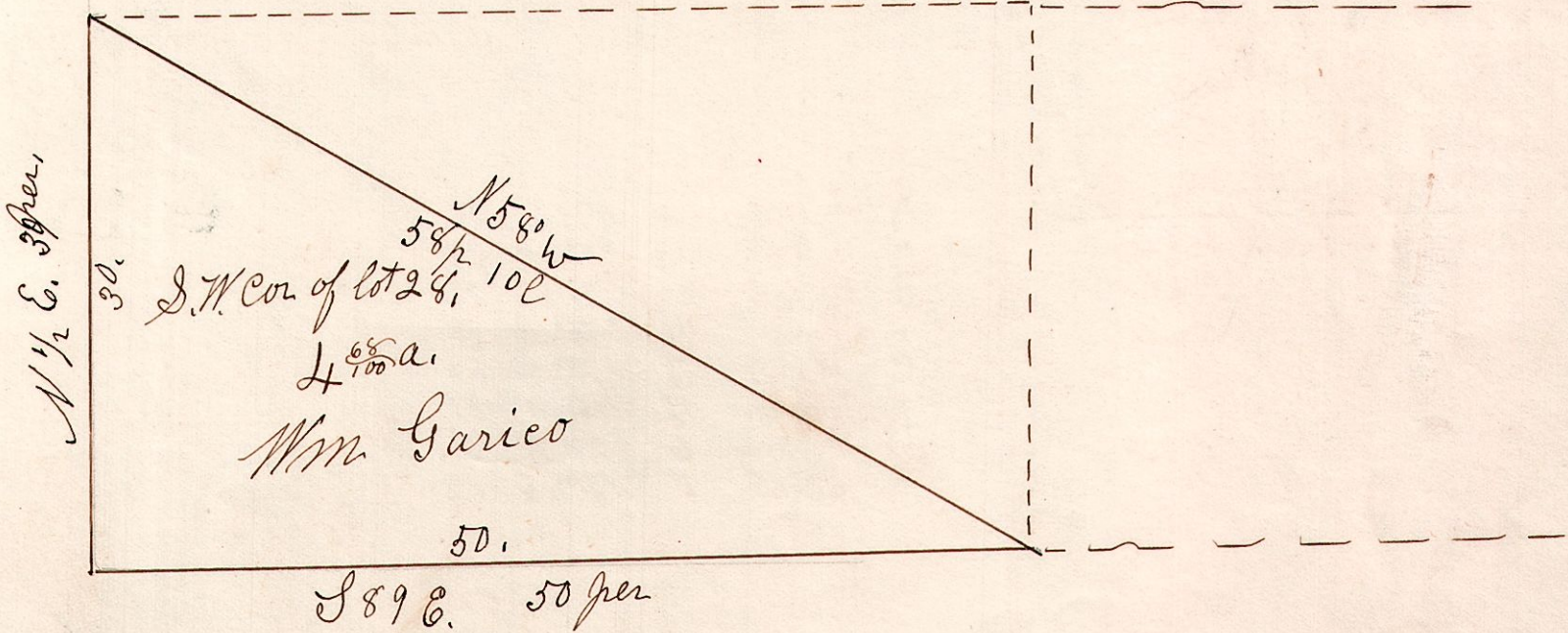
S.W. Corner 1888.

6. 8. 28. 2^d gr.

Lot 28, 2^d gr. 58. R. 6.

December 18th 1844.

651



S 89 E. 50 per