

6. 8. 27 2nd q^r October 1st 1866. Lots 27 & 28. in 2nd q^r S 8. R 6.

643
y^e b^e c^h o^r y 8 N 55 W 17.
D^o. 5 S 21 E 24.

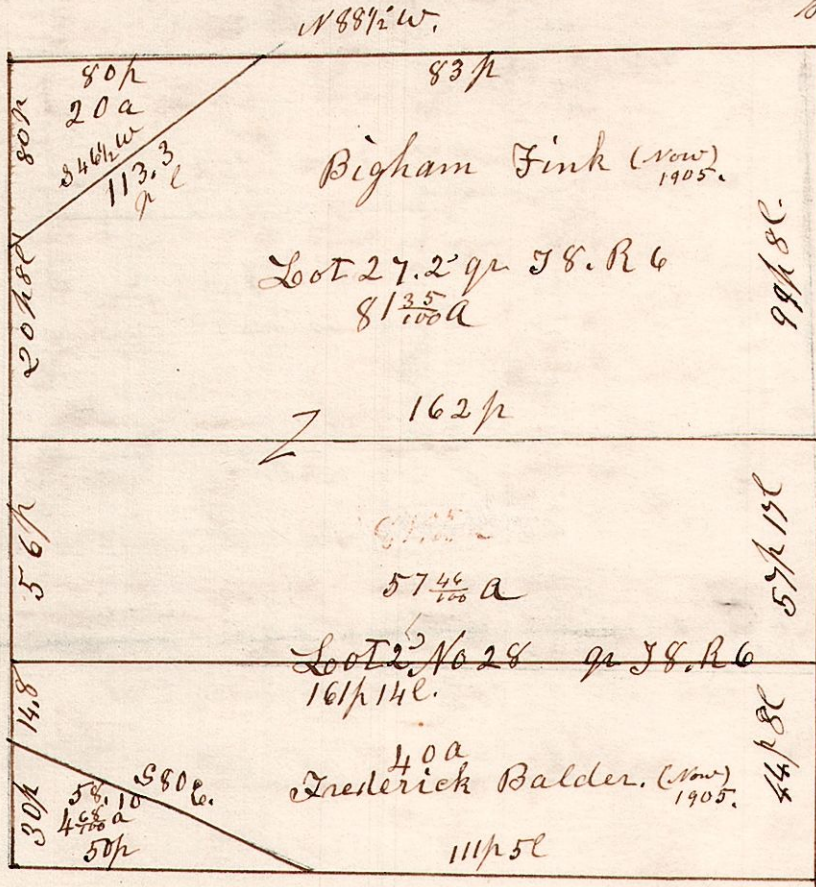
Maple 5 S 67 E 34.
Sugar 7 N 76 W 26.

B. Oak 20 N 13 E 29.
do 22 N 44 W 39.

W. Oak 12 N 25 1/2 W 8.
Maple 7 N 87 1/2 E 14.

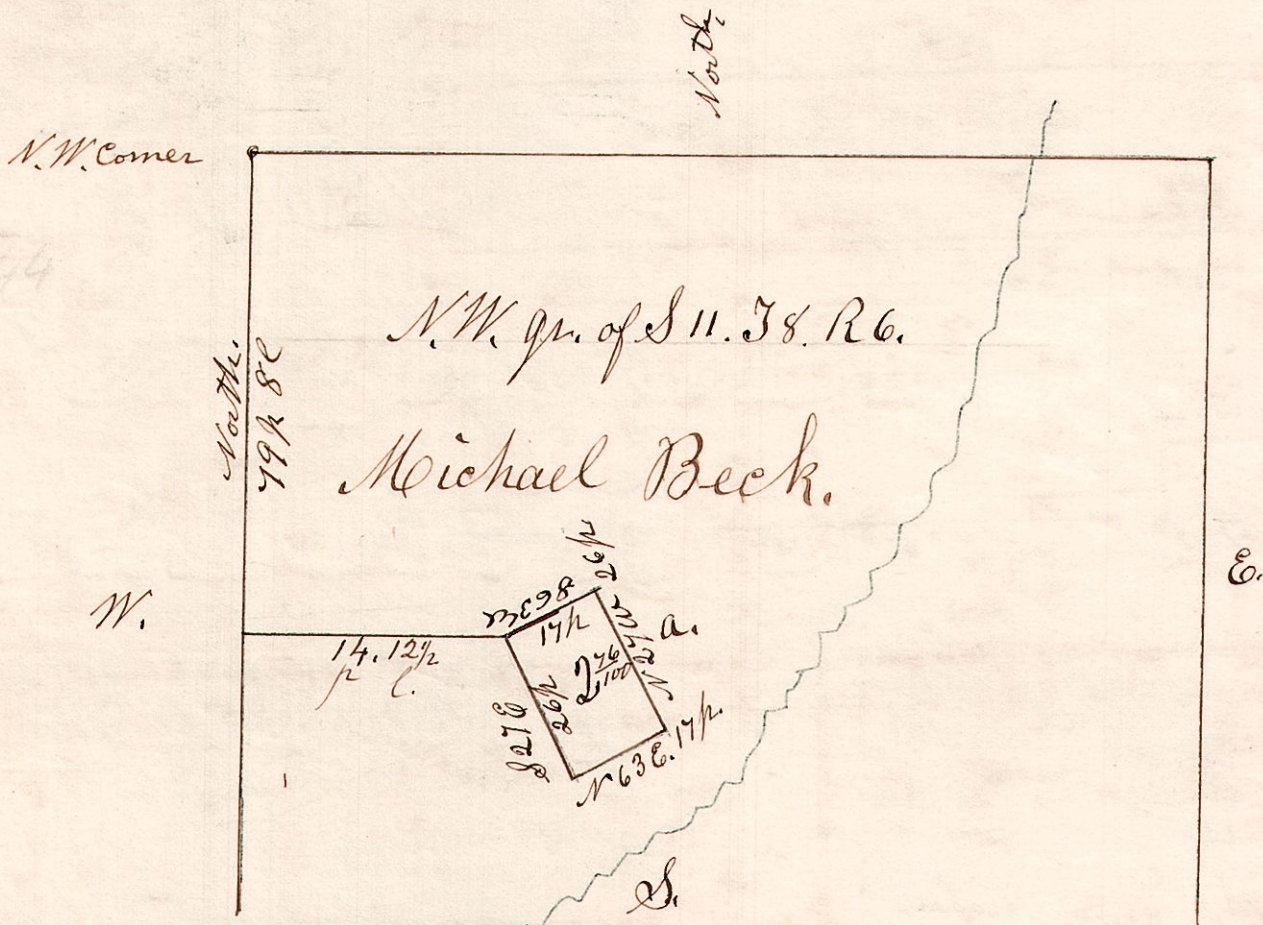
Chestnut N 67 E 10.
Beech N 15 W 31.

W. Oak 15 N 33 1/2 W 50.
do 17 S 27 1/2 E 56.



6. 8. 11.

SW of sec 10.



I do hereby certify that the above is a correct plat of 276 acres of land, being part of the north west quarter of Section 11. in T⁸ N of Range 6. and situated on said quarter as marked in the plat.

April 2nd 1853.

Samuel Robinson Surveyor.