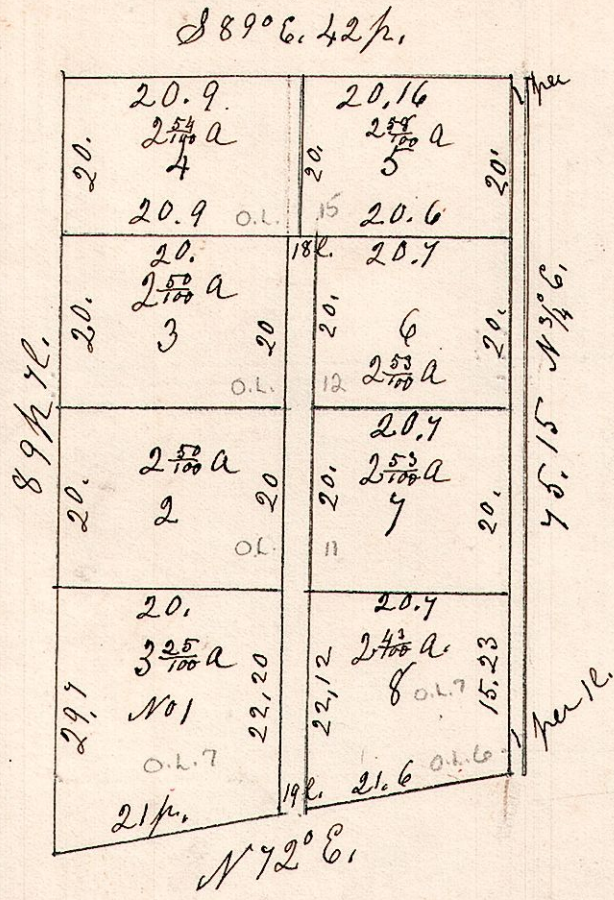


Sept 6th 1851 Surveyed the N.W. part of the S.W. q^r of Sec 11. 59. R7.
for John McClaran into out lots as follows,

John McClaran,
Sept 6th 1851.

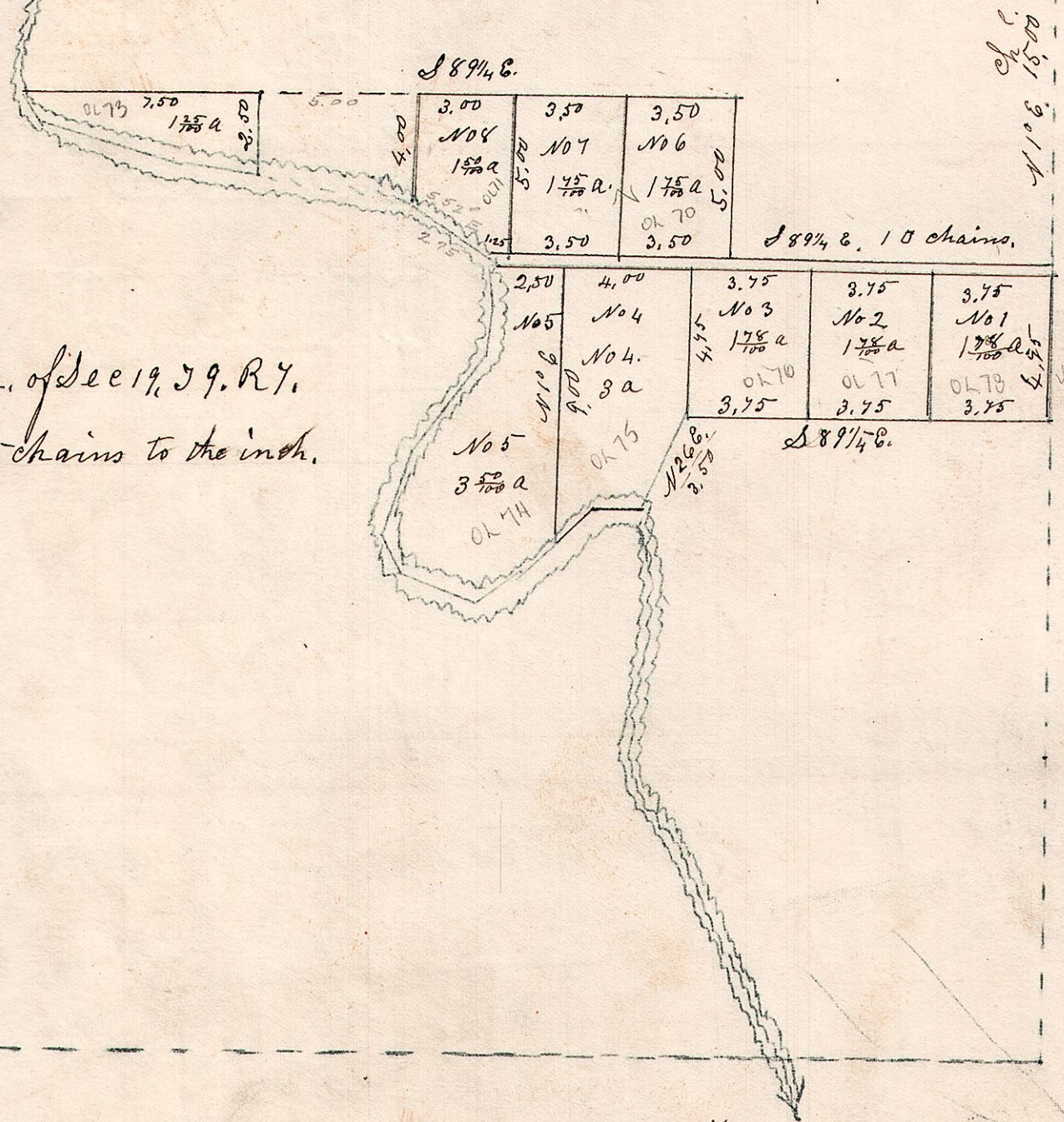


7.9.19.

NW corner of Sec.

Seth Hunts Out lots.

N.W. q^r of Sec 19. 59. R7.
Scale 5 chains to the inch.



figures across and see west line

Killbuck Creek.

I do hereby certify that the above is a correct plat of S. Hunts addition of Out lots. South of Millersburg, and being part of the north west quarter of Section 19. in Township 9. of Range 7. An alley commencing at the N.E. Corner of Lot No 1; Thence running West West to Killbuck Creek 16 1/2 feet wide. The lines of the lots that bound our Killbuck creek, is in the center of the creek.

October 2nd 1849. G. Robinson Surveyor.