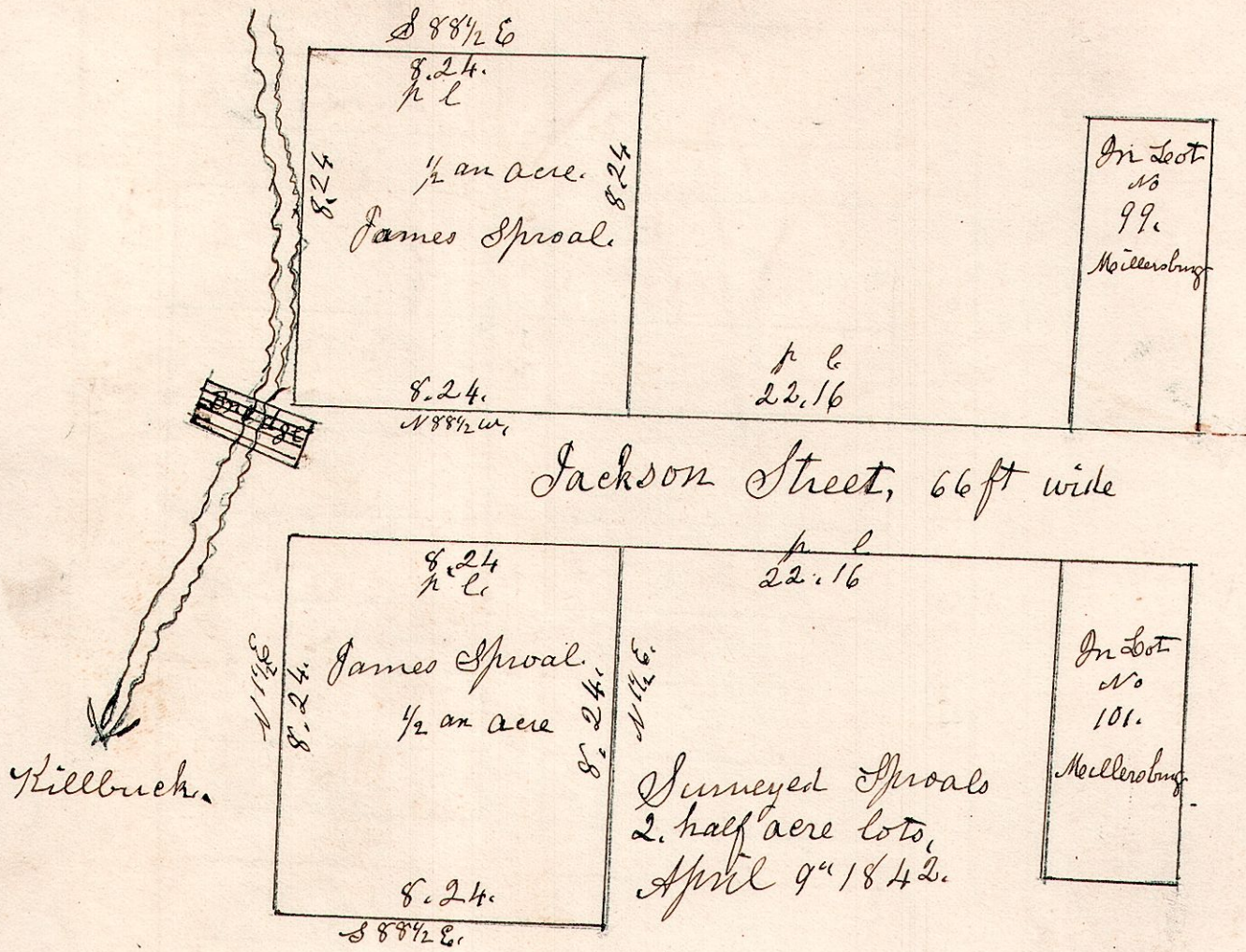


7.9.12. SW 91.

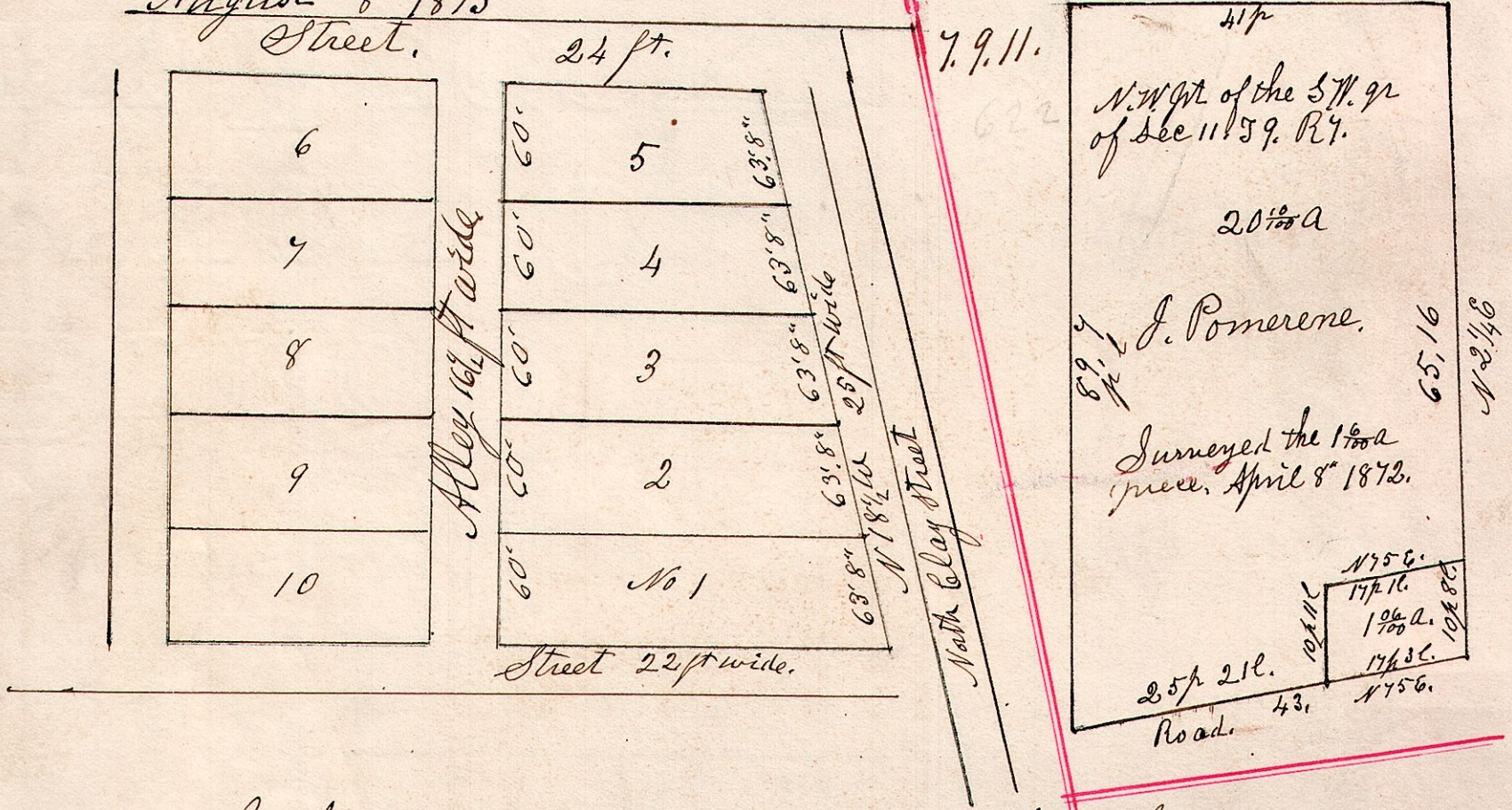
Part of the SW q. of Sec 12. T9. R7.
April 9th 1842



Situated immediately at the end of the Bridge across Killbuck west of Millerburg, one on the N side of the road, and the other, on the South Side.

7.9.47. 100.

August 8th 1873



New Sabina Gaskill's addition of lots to Millerburg, situated on lot 108. in Becker's addition of out lots, which is on lot 47. Et W. R. Sep. C. Holmes County, Ohio. Stone 8 inches diameter planted at S.W. corner of lot No 10, to make future surveys from.

August 8th 1842.

7.9.19. NE q.

