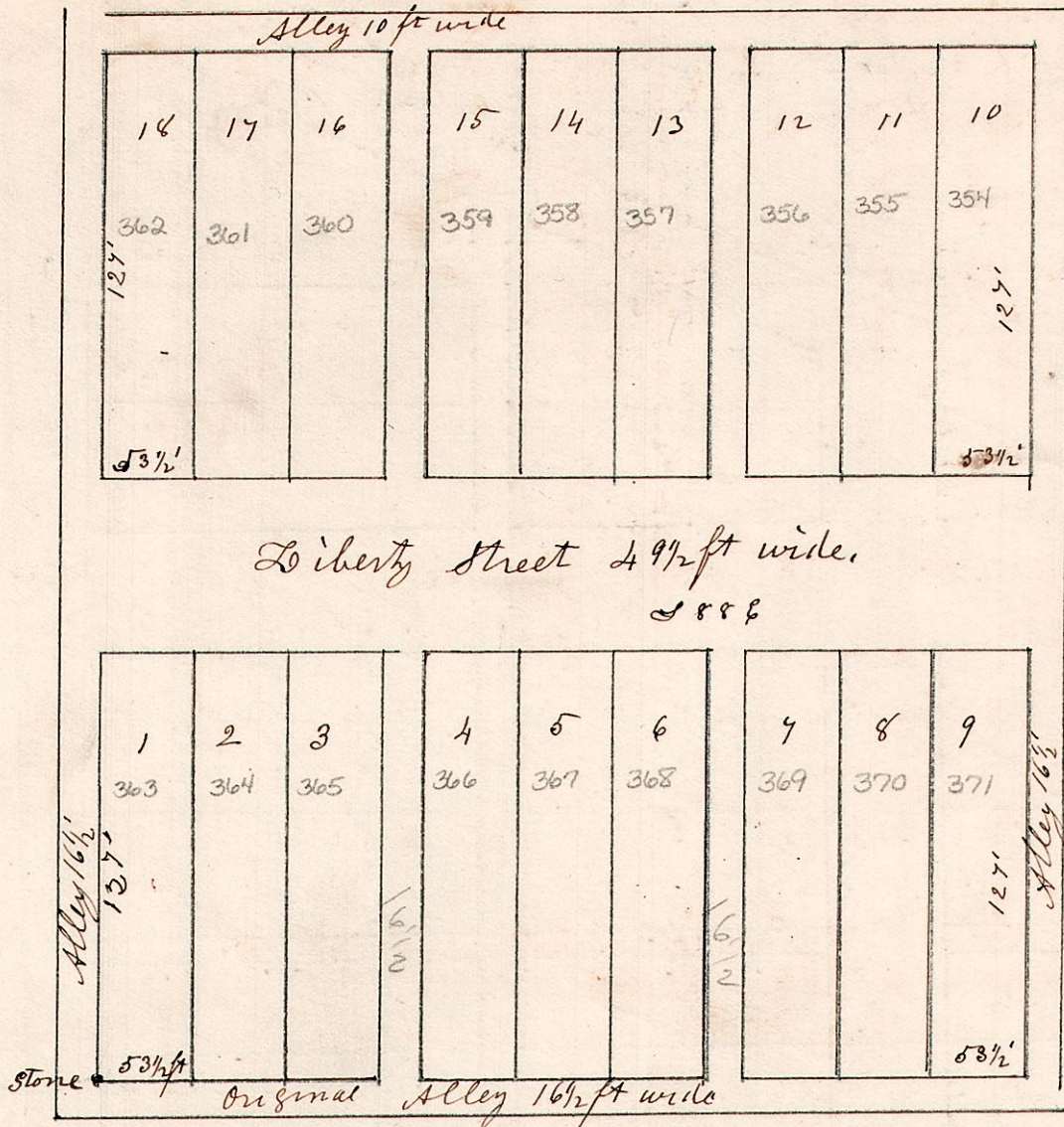


7. 9. Out lot 41. subdivided, 3³⁰/₁₀₀ a.

Nov 12th 1861.

16.5
660

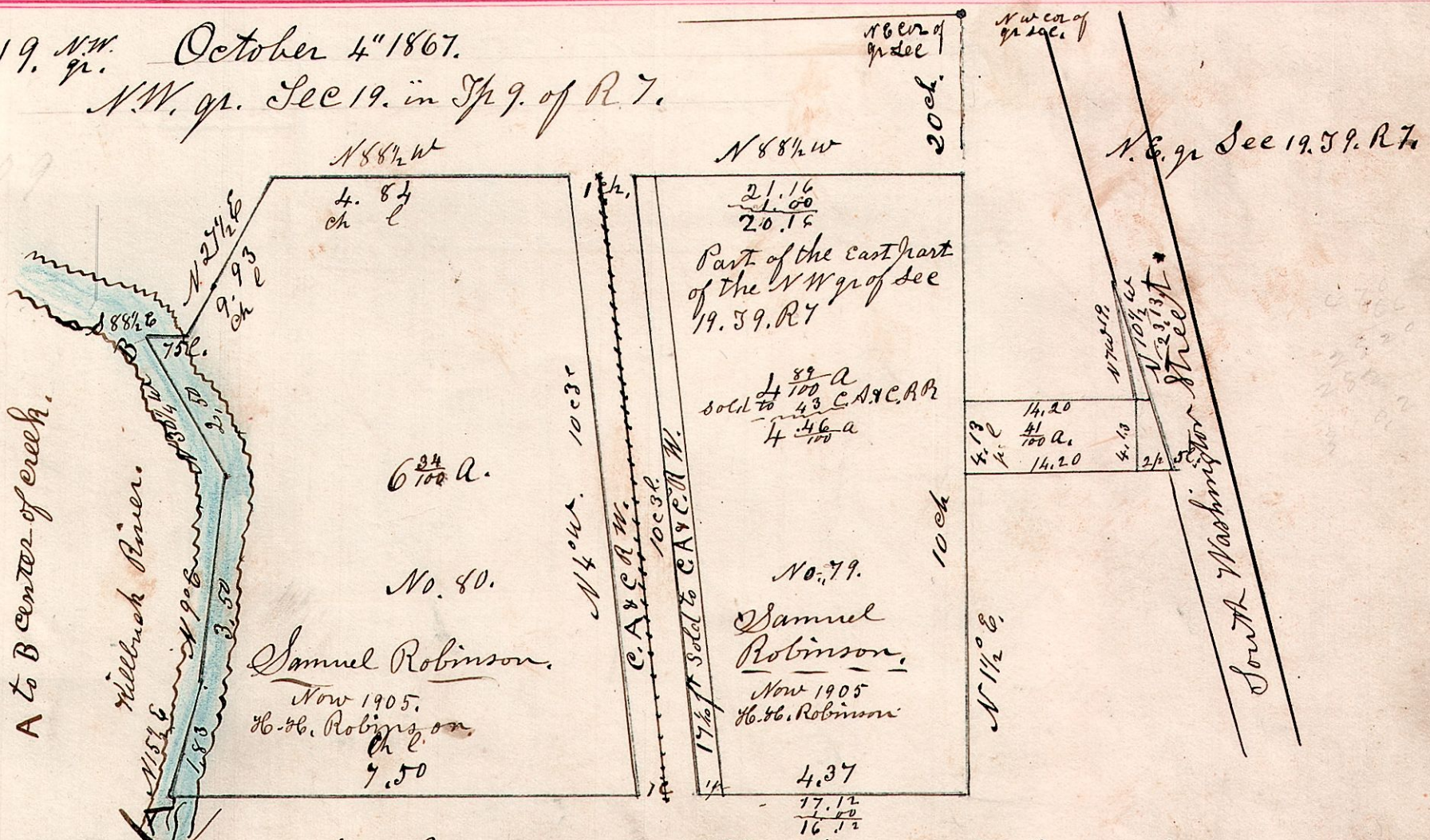
John Cary
Proprietor



Plat, scale 80 ft to inch.

John Carys addition. I do hereby certify that the above is a correct plat of 18 lots situated on Sub-Div. out lot No 41, East of the original Town Plat of Millersburg the county seat of Holmes County Ohio. The above lots are 53 1/2 feet in front, fronting on Liberty Street, and 127 feet back. Alleys 16 1/2 feet wide. Except the alley on the north, which is 10 feet wide. A stone 18 inches long and 4 inches diameter at the top, planted at the S.W. corner of inlet No 1, to make future surveys from; Said Stone being the S.W. corner of said Sub-Division out lot No 41, on which the above inlets are situated.

7. 9. 19. N.W. q. October 4th 1867.
N.W. q. Sec 19. in T⁹. of R. 7.



Description of 6^{3/4} acre piece. Being pt of c^{pt} of NW q. Sec 19. T⁹. R. 7. Commencing at a post on E line 20 chains S. of NE cor; Thence N 88 1/2 W. 6 ch 41 l to place of beginning; Thence N 88 1/2 W. 4 ch 84 l to post; Thence S 27 1/2 W. 2 ch 93 l to post; Thence N 88 1/2 W 75 l to post in Hillbuck creek; Thence S 30 1/2 E 2 ch 50 l to post in creek; Thence S 90 W. 3 ch 50 l to post in creek; Thence S 15 1/2 W 10 ch 83 l to post in creek; Thence S 88 1/2 E. 7 ch 50 l to a post; Thence N 4 W 10 ch 3 l to place of beginning. Containing 6^{3/4} Acres