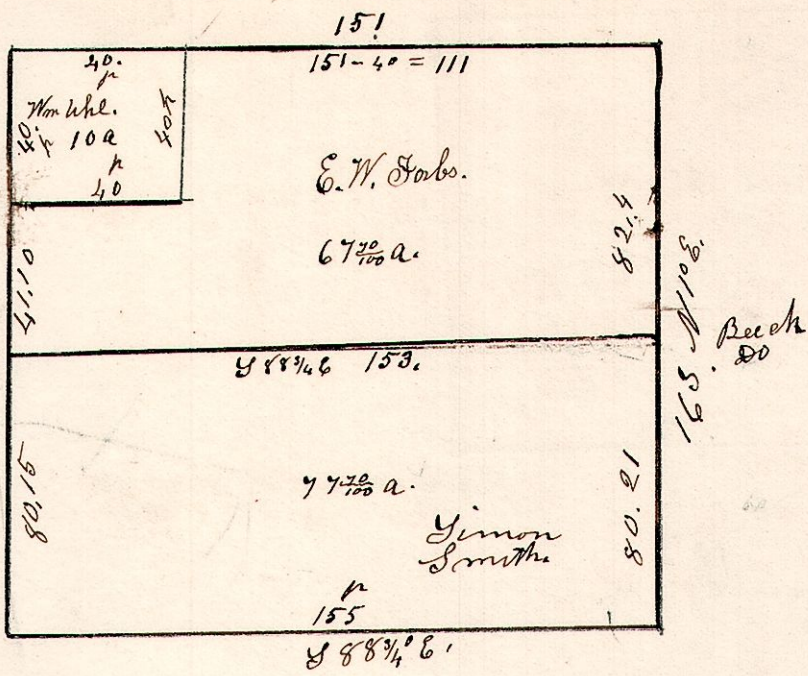
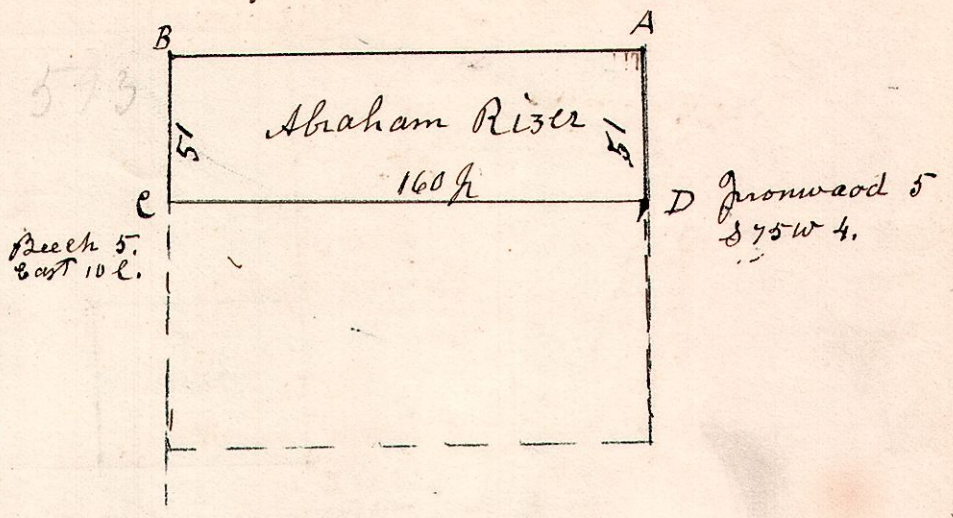


7.9.11.3rd March 21st 1859.
 Lot No 11. in 3rd 59. R 7. Surveyed &
 St. W. R School Land. Subdivided.

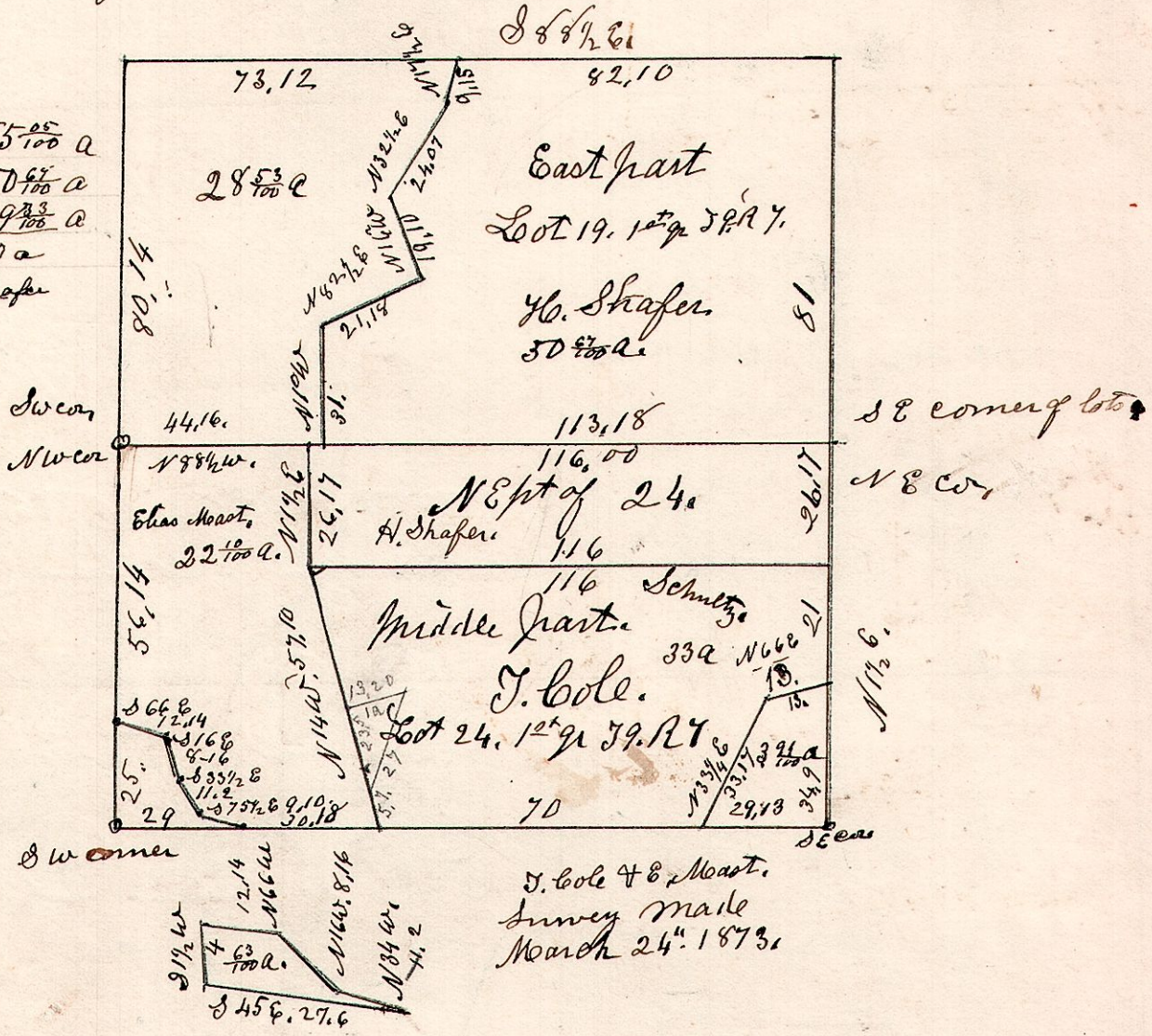


7.9.13.3rd April 23rd 1833, Surveyed 51 acres 183
 Taken of the north part of lot 13. 59. R 7 3rd



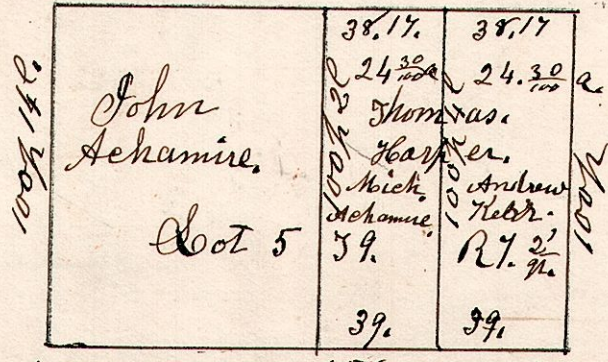
7.9.19.24.1st Surveyed lots 19 & 24. 1st 59. R 7. February 24th 1873.

Feb 20th 1871.
 J Cole & Co Mast 50 5/8 a
 Survey
 March 24th 1873.
 19 7/8 a
 70 a
 H. Shafer



7.9.5th April 20th 1839.
 Surveyed and divided Lot 105. 59. R 7. 2nd 59.

Maple 15 S 43 W 12.
 Maple 12 N 16 W 26.
 154, 18.
 Beech 11 S 48 W -
 W Oak 14 N 11 E -



Dogwood 3. corner 156.
 W Oak 30 N 53 E 4.
 Hickory 12 N 81 E. 21.
 Do 10 S 20 E. 28.