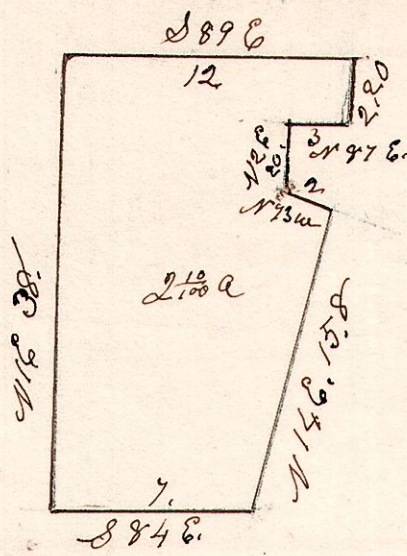
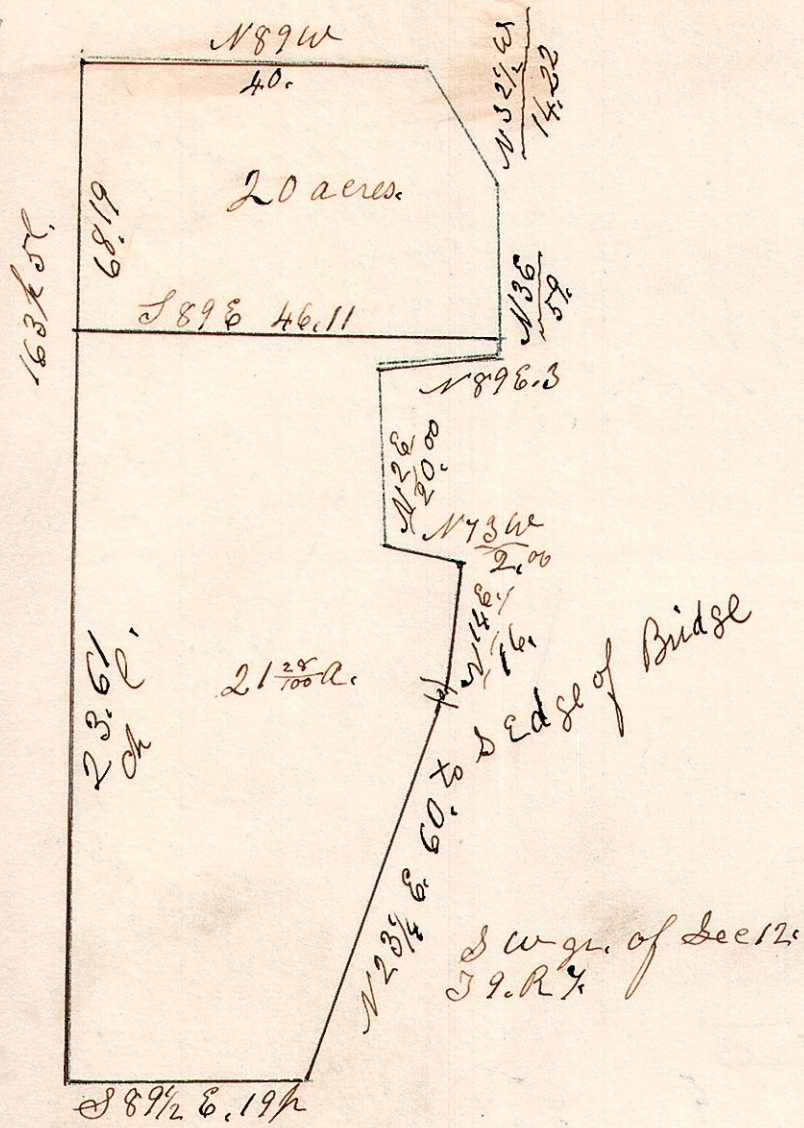


7.9.12

Mill Company
1848.



Sw corner

1	S 89 1/4 E	4.75
2	N 23 1/4 E	15.00
3	N 14 E	4.00
4	N 7 1/2 W	0.50
5	N 2 E	5.00
6	N 87 E	0.75
7	N 3 E	14.75
8	N 32 1/4 W	3.75
9	N 89 W	10.00
10	S 1 W	40.80

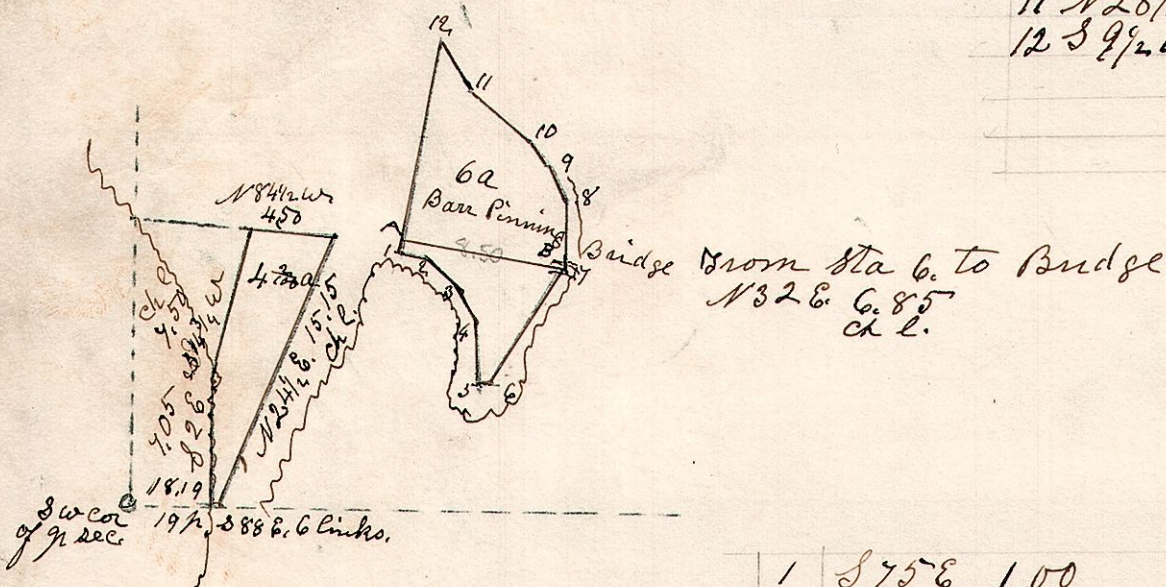
} 41 28/100 Acres

7.9.12

February 21st 1865.

S w gr. Sec 12. T 9. R 7.

- A is 1 perch N of Maple corner
 - A. S 80 E 8c50k to Bridge
 - B. N 9 W 0.60
 - 7 N 2 1/2 E 3.25
 - 8 N 21 W 2.00
 - 9 N 40 W 1.50
 - 10 N 51 W 4.50
 - 11 N 28 1/2 W 3.00
 - 12 S 9 1/2 W 11.00 to beginning.
- 6 acres



S w gr Sec 12 T 9 R 7.
Feb 21st 1865.

1	S 75 E	1.00
2	S 47 E	2.25
3	S 27 E	1.75
4	S 5 1/4 E	3.50
5	S 88 E	0.75
6	N 31 E	7.45
7	N 1 1/2	3.25