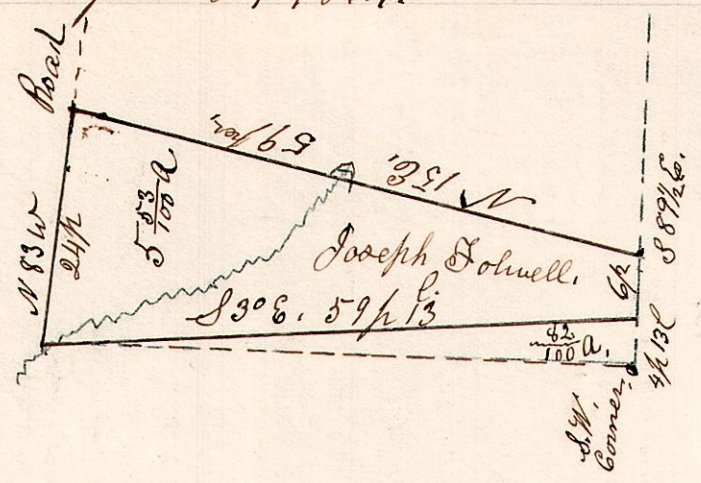


7.9.12. Wpt of the S W q. of  
Sec 12. T9. R7.  
April 27 1864.

April 27 1864. Joseph Ankeny. } Chain  
Joseph Folwell } Carriers.

547



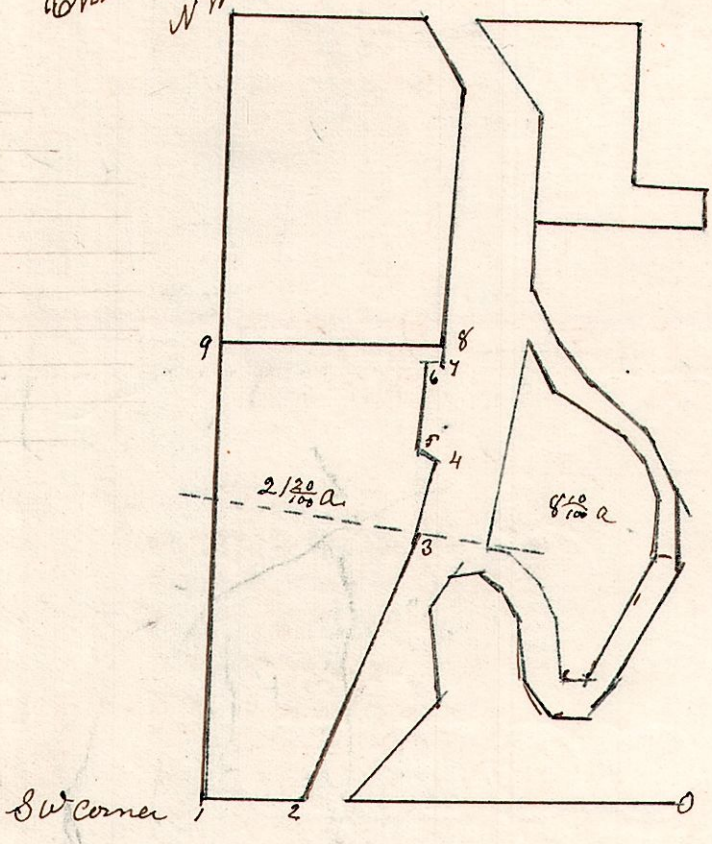
Commencing 4 perches and 13 links east  
of the south west corner,  
Thence East 6 perches,  
Thence North 15 E 59 1/2 links,  
Thence North 83 W 24  
Thence S 3 E 59 1/2 links.

7.9.12. T9. R7. Wpt of S W q.  
April 27 1864. Joseph Ankeny.

Chancery Record No 3, Page 118.  
NW corner.

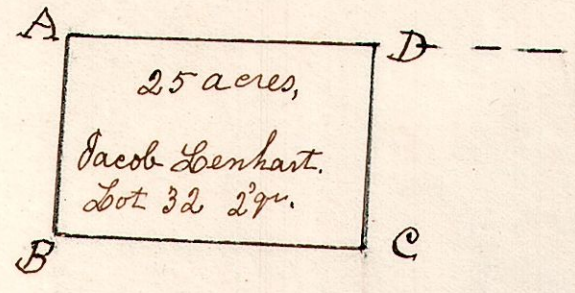
548

	Ch	L
1	S 89 1/4	4.75
2	N 23 1/4	15.50
3	N 14	4.00
4	N 73 W	0.50
5	N 2	5.00
6	N 89	0.75
7	N 30	0.71
8	S 89 W	11.61
9	S 1 W	23.61



7.9.32. 2/2  
August 21 1826.

549 Surveyed twenty five acres for Jacob Lenhart, being part  
of lot No 32. in Township 9 of Range No 7 in the 2 quarter  
Township. The above is situated in the north west corner  
of the above mentioned lot. E N 80 & N 8 50 perches.



D W. Oak 30 N 38 E 21.  
" B. Oak 28 N 61 W 24.

A Gum 13 N 27 W. 7.  
" W. Oak 24 S 23 E 20.  
B Dogwood 8. the Corner.  
C W. Oak 25 South 26.  
" Beech 12 S 73 E 31.