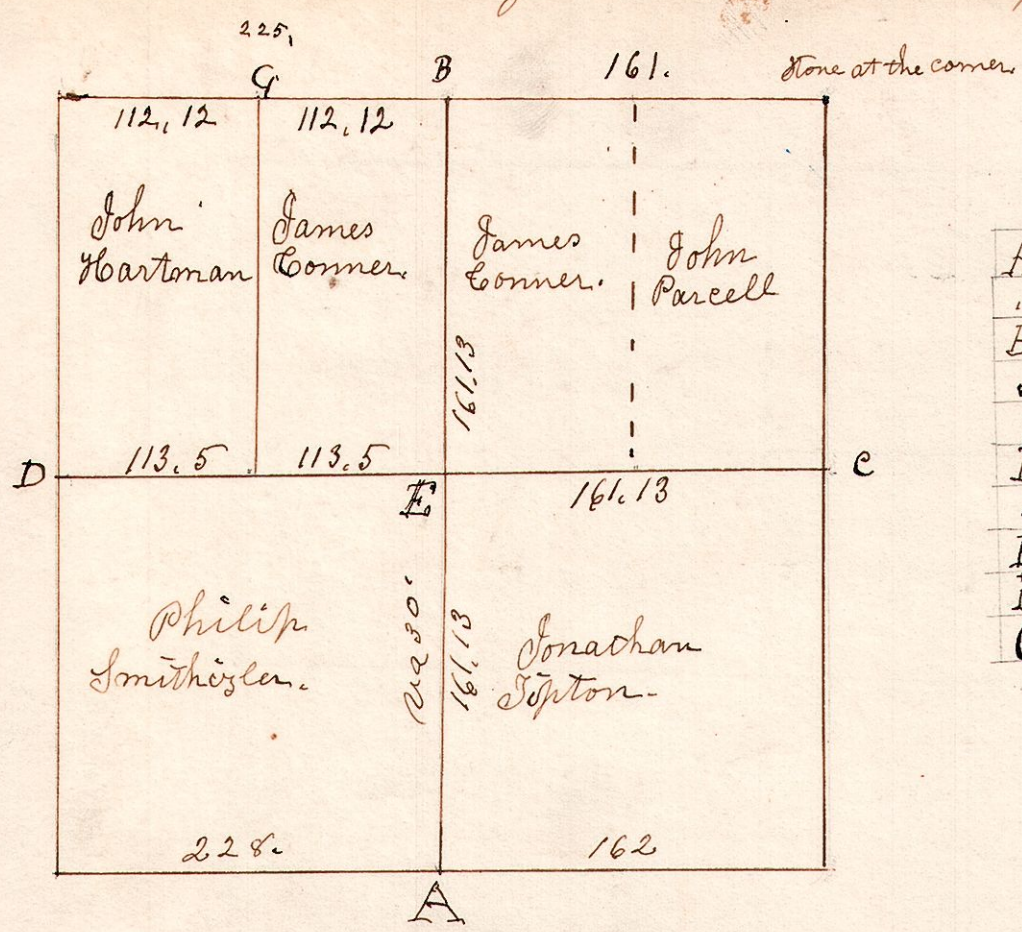


9.9.16

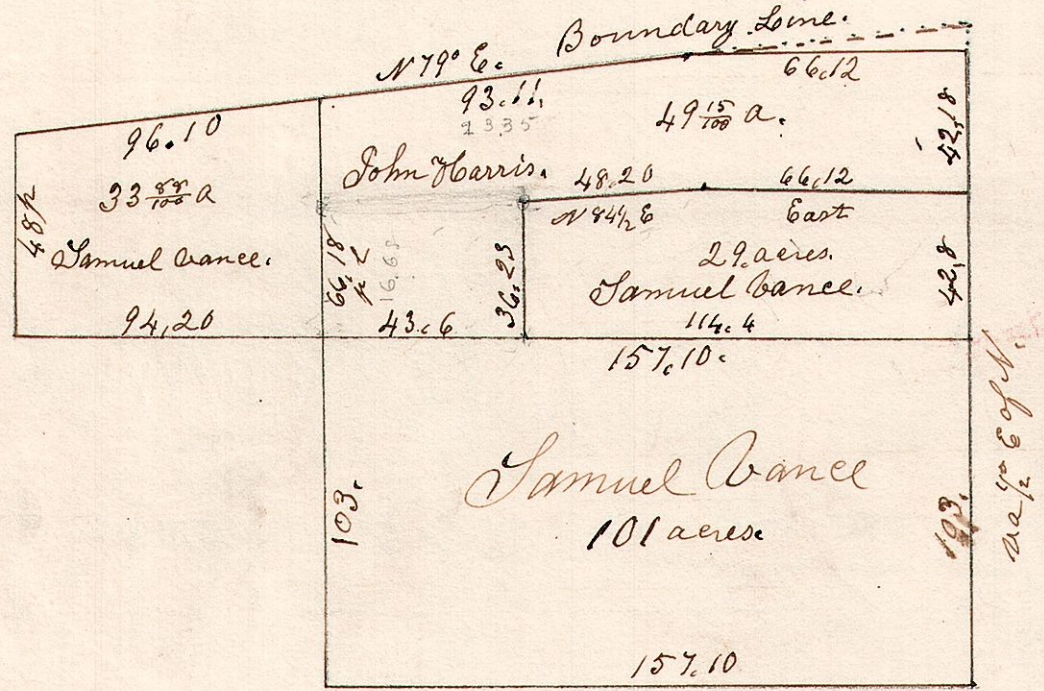
Dec 4<sup>th</sup> 1835. Surveyed Section 16 in Sp 9. of R 9. as follows.



|   |              |    |      |    |
|---|--------------|----|------|----|
| A | S. Spr       | 8' | S33W | 32 |
| " | Do           | 6  | N1E  | 22 |
| B | Chestnut     | 20 | S7E  | 6  |
| " | W. Oak       | 12 | N4E  | 70 |
| C | W. Oak       | 30 | S55E | 16 |
| D | W. Oak       | 20 | S79E | 49 |
| " | Do           | 18 | S69E | 35 |
| E | Stone corner |    |      |    |
| F | Stone corner |    |      |    |
| G | Stone corner |    |      |    |

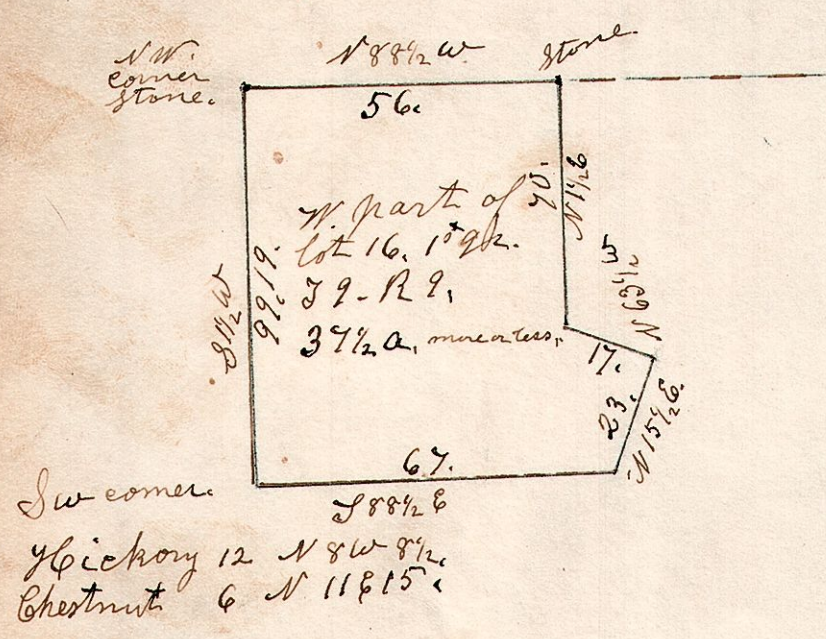
9.9.203  
2<sup>nd</sup> q<sup>r</sup>.

May 14<sup>th</sup> 1841.  
Lots 2<sup>nd</sup> in 2<sup>nd</sup> quarter, in Township 9. of Range 9.



9.9.16. lot 1/2

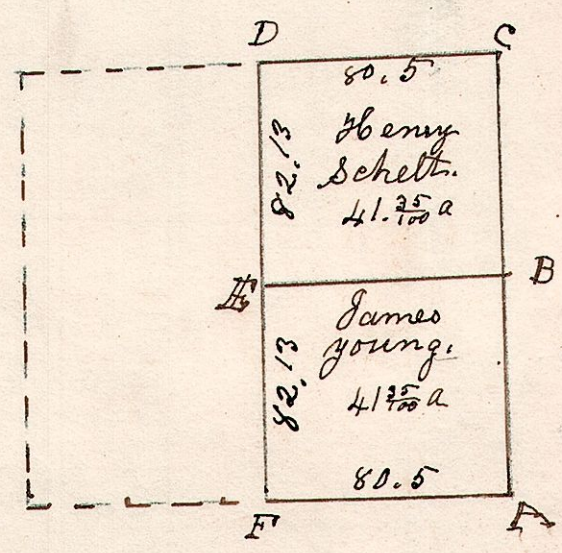
August 18<sup>th</sup> 1866.  
Surveyed for J. A. Harris.



August 18<sup>th</sup> 1866.  
Surveyed for J. A. Harris.

7.8.5.

April 18<sup>th</sup> 1832.  
Surveyed the East half of the N.E. quarter of Sec 5. in S 8. of R 9. in the following manner:



Posts at all the corners.