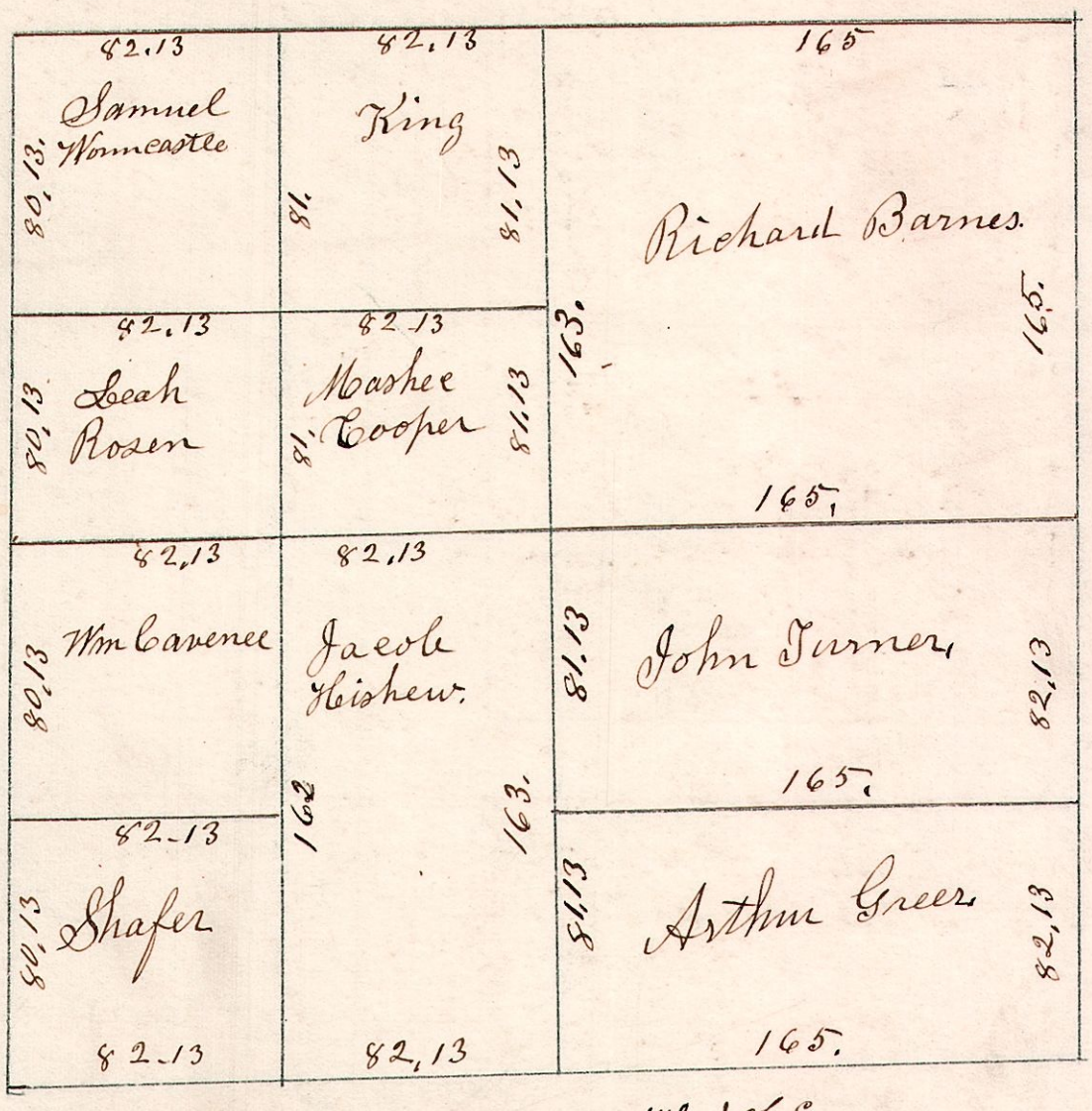


9.8.13. April 27th 1841. Surveyed S 13 in S 8 of R 9.

534

S 2 E 6 on 1/2 C of W.



S 30. on 1/2 S of E

S 31.16

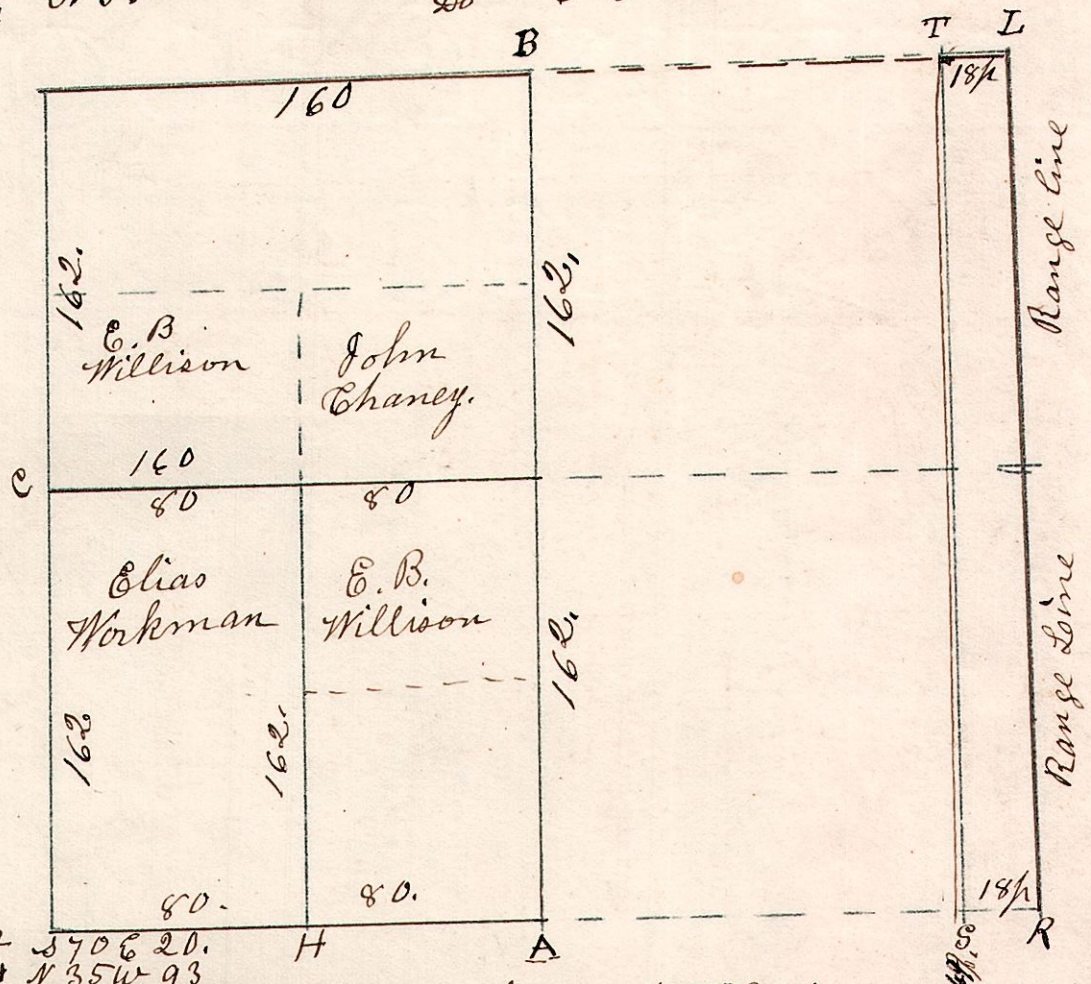
13310
8223
82-10
300
152
331

9.8.11. March 6th 1834. Surveyed Sec 11.38. R 9. in the following manner & for the following persons:

535

W. Oak 24 N 70 E 35. B. Oak 6 S 4 E 16.
B. Oak 14 N 56 W 35. Do 6 S 18 W 15.

W. Oak 16 N 67 W 25.
B. Oak 10 S 21 E 28.



W. Oak 22 S 70 E 20. B. Oak 20 N 55 E 50.
Chestnut 24 N 35 W 93. E. Oak 12 S 43 E 33.
S. B. Oak 13 West 4. Do 10 N 2 E 43.
Do 45 N 45 E 33. H. W. Oak 6 South 28.
Do 5 S 40 E 33.

S. 92 feet, B. Oak 8. N 45 E 48. 50.
S. E. cor. B. Oak 13 West 4.
Do 15 N 45 E 33.

At the South East corner of the above section, the corner has been established 18 paces west of the Range line by the original Surveyors.

11
20