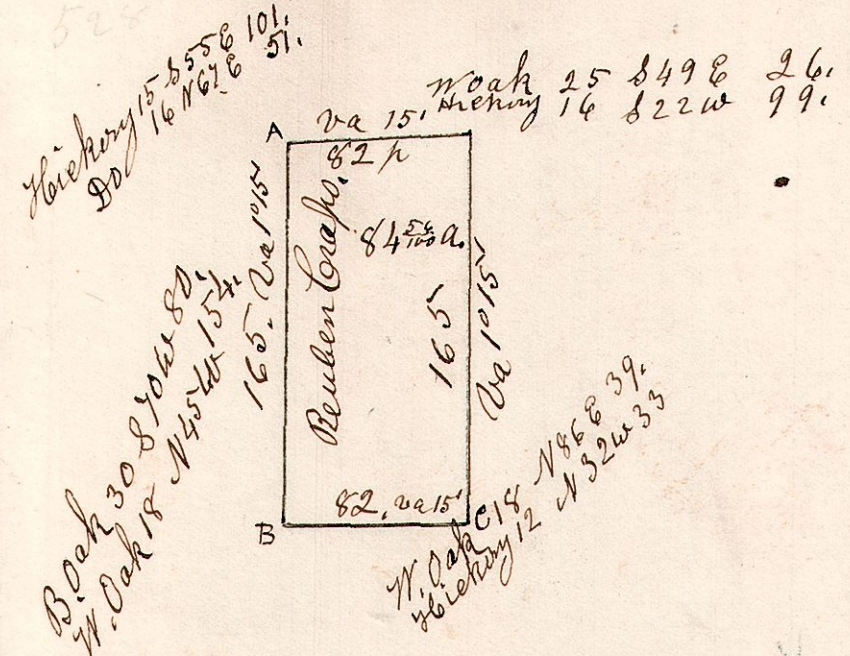
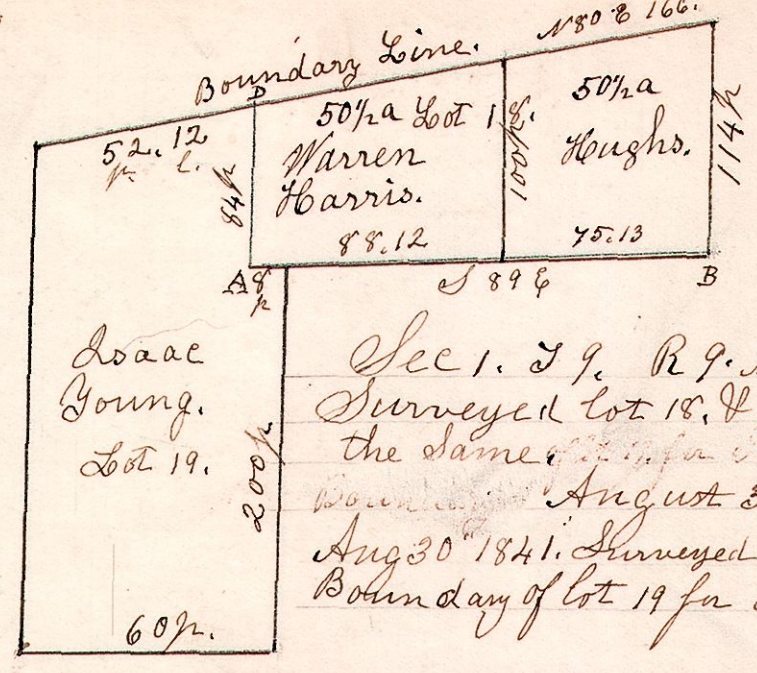


9.8.22. W^{1/2} of S.W. q. January 28th 1829.
 Surveyed the W^{1/2} of the S.W. q. of Sec
 22. in T 8 of R 9 for Reuben
 Cerapo.



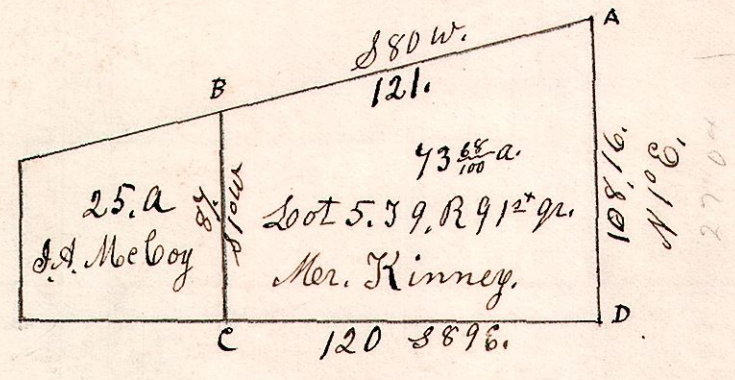
A	Dogwood	8	N 10 W	24
"	Do	7	S 30 E	28
B	B. Oak	30	S 70 W	80
"	Gum	8	N 70 E	50
C	Hickory	13	S 20 W	10
"	W. Oak	26	N 48 W	45

9.9.18. 1st q. August 31st 1831. See 1. S 9. R 9.



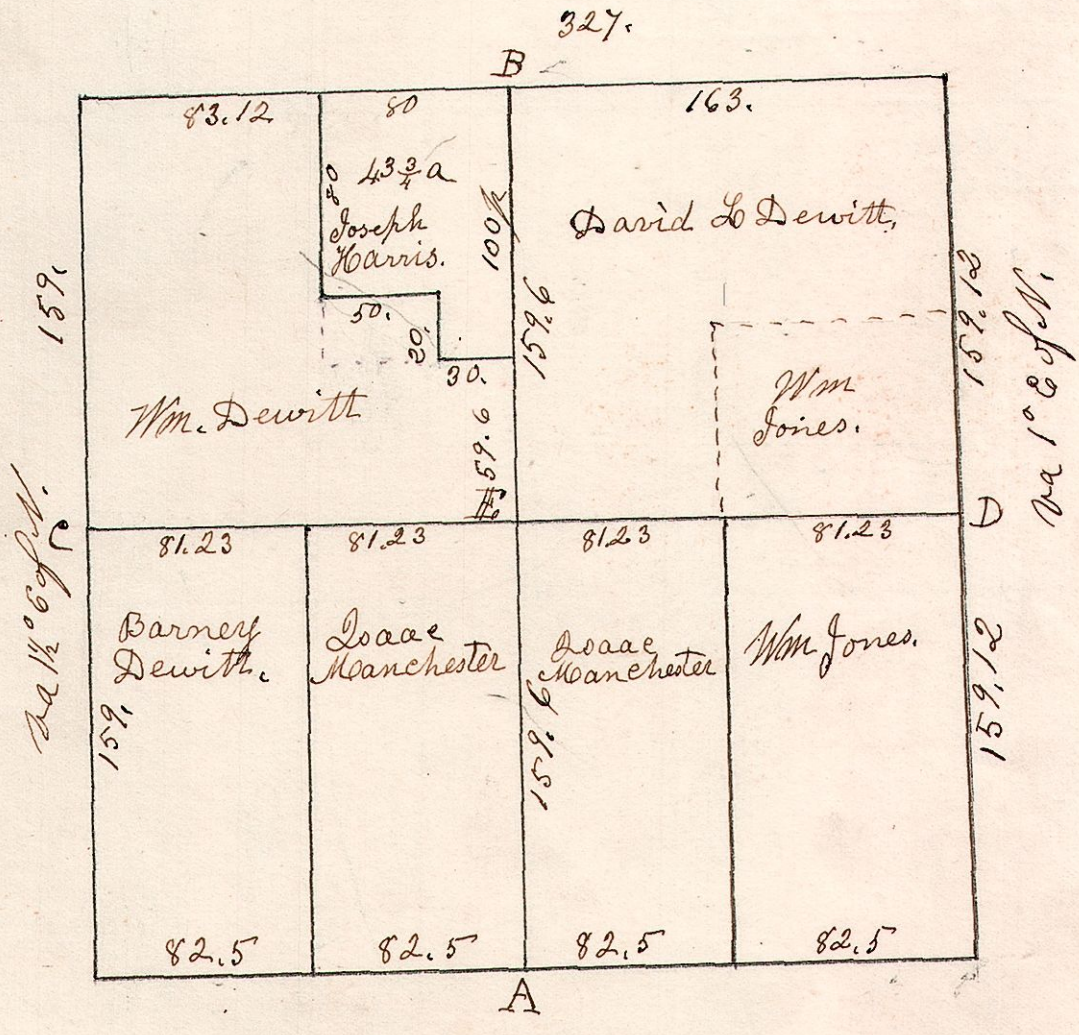
See 1. S 9. R 9. Military
 Surveyed lot 18, & divided
 the same. August 31st 1831.
 August 30th 1841. Surveyed the eastern
 Boundary of lot 19 for Joaac Young.

9.9.5. 1st q. July 1st 1842. Surveyed lot 51st 2nd 59. R 9.



B. B. Oak 4. 8856 2 1/2.
 July 1st 1842.

9.8.3. April 22nd 1841.
 Surveyed section 3. in
 T 8 of R 9. in the following manner.



N 1/2 S through center. 318.21.
 E 1/2 W " " 329.9.

Stone planted at each corner of Section,
 and Sub division Corner.