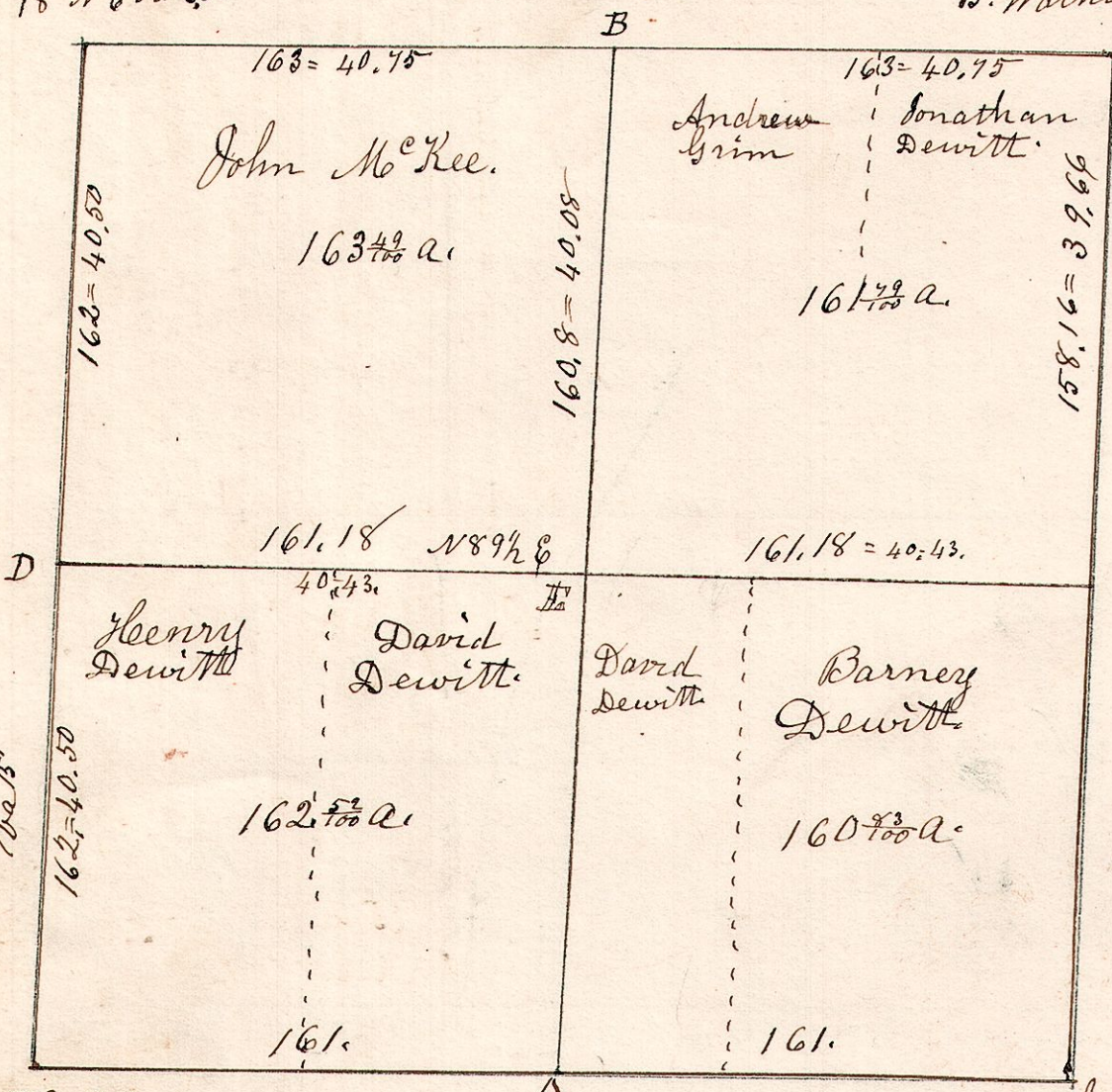


April 19th 1833. Surveyed Section No 4. in T8. of R 9.
 in the following manner & for the following persons.

W. Oak. 10 S 20 E 7.
 B. Oak. 18 N 60 W 60.

original decayed.

W. Oak 18 S 10 E 60.
 B. Walnut 5 N 20 W 26.
 2828.



W. Oak 30 N 56 W 58.
 Do 30 S 42 E 23.

B. Oak 24 N 40 E 18.
 3177.
 Chainmen
 Daniel Starner,
 Barnard Dewitt.

N 4 D 320-7

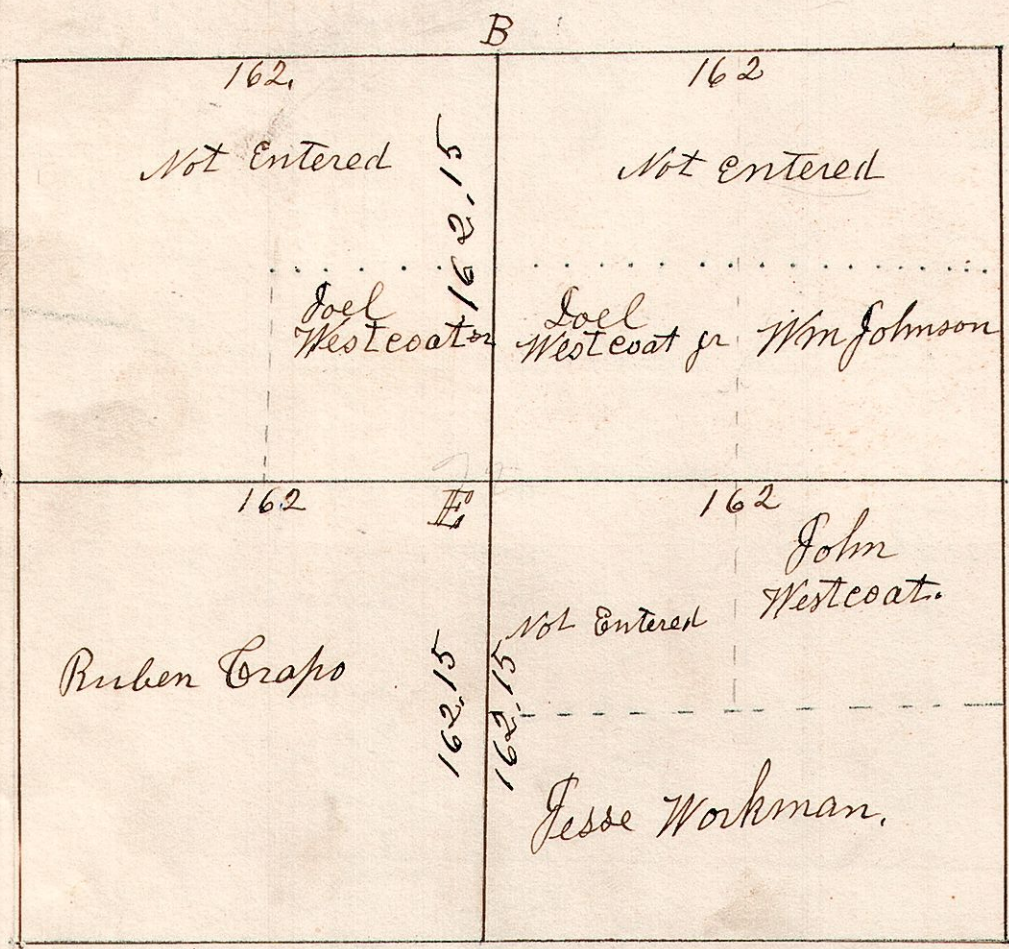
W. Oak 10 S 5 E 20.
 Do 18 N 20 W 20.
 B. W. Oak 15 S 4 E 33.
 Dogwood 7 S 42 W 31
 E. the corner.

B. Oak 7 S 30 W 13.
 Do 8 N 70 W 20.
 W. Oak 6. the corner.

B. Oak 26 N 50 W 20.
 W. Oak 18 S 15 E 33.
 Stone 12" the corner.

March 7th 1834. Surveyed Section 22. in T8. R 9.
 in the following manner & for the following persons.

Hickory 18 N 67 E 50.
 Do 20 S 72 W 50.



Stone 12" the corner.
 324 14.
 55 16.

E. B. Oak 20 N 79 W 52. E 7 1/2 center 324. N 89° 30' W 2 a 30' N of W.
 Hickory 15 S 61 W 61.