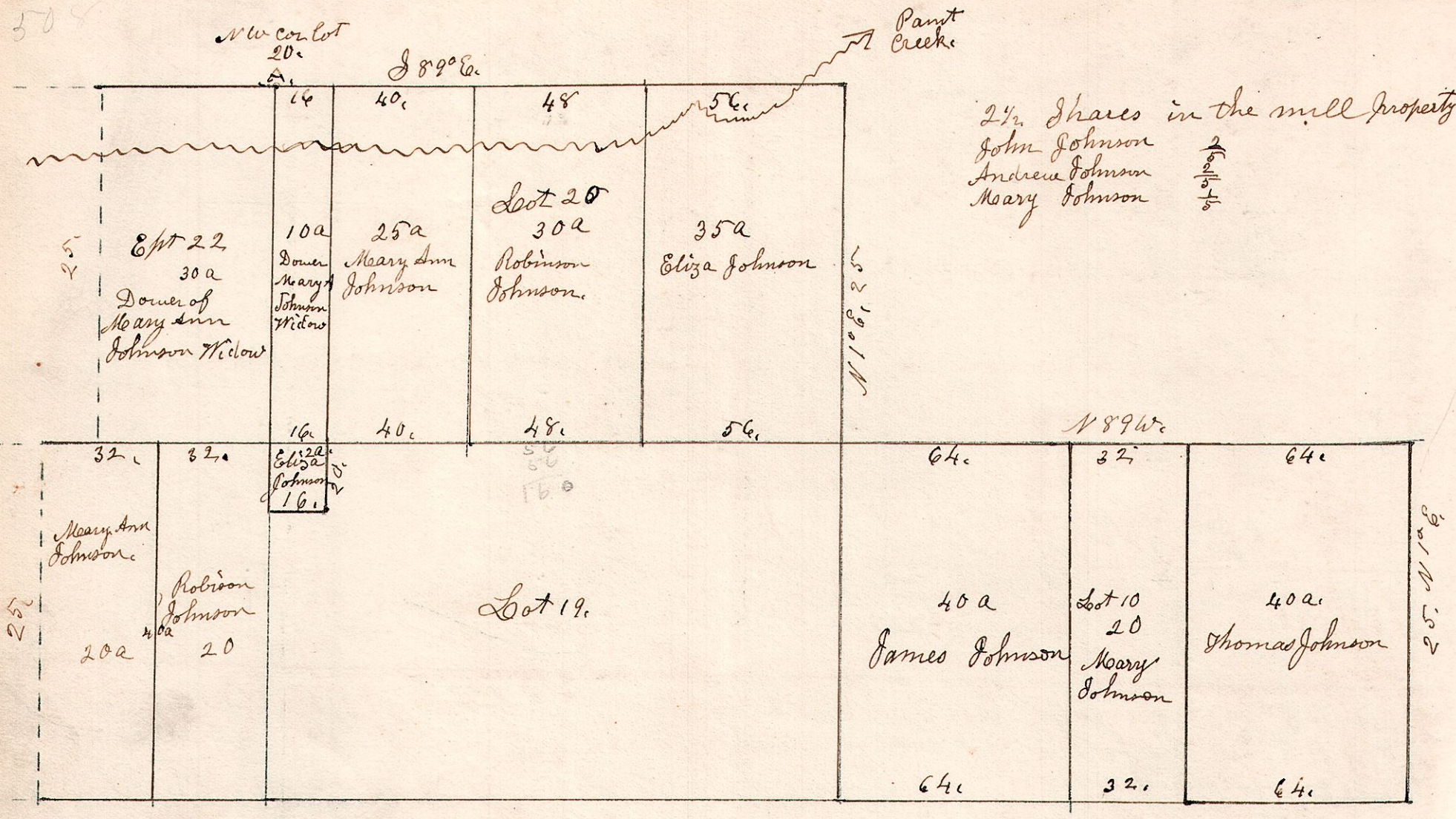


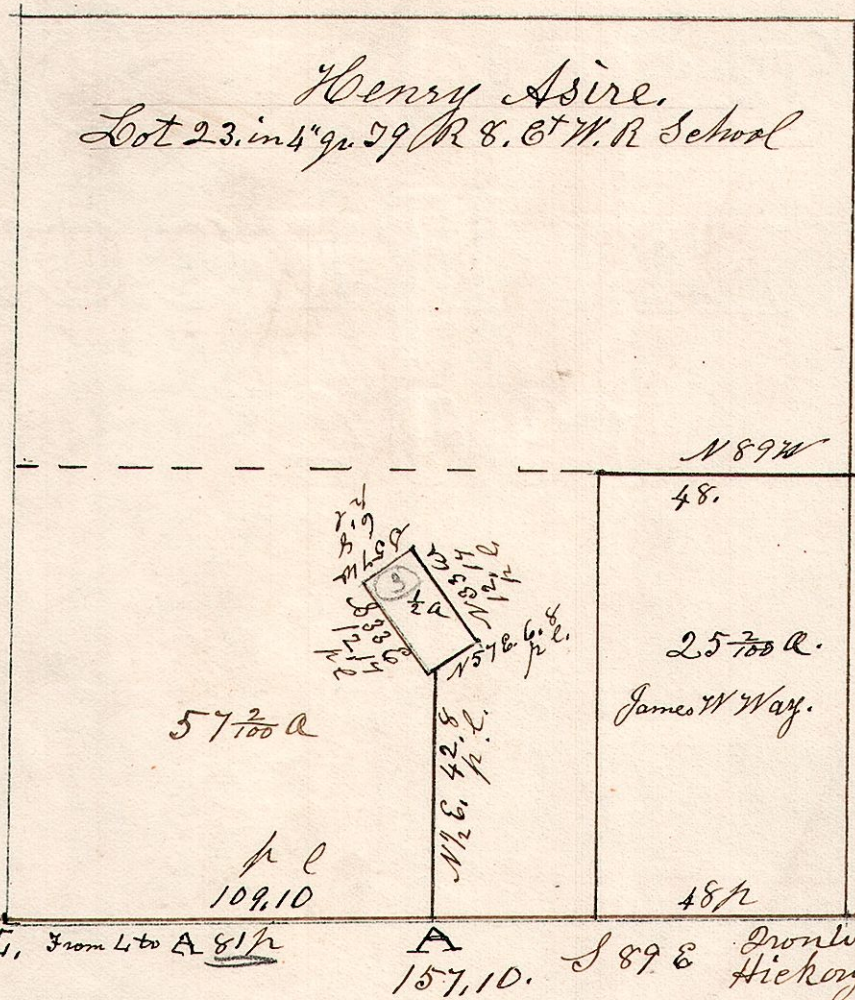
8.9.20.1 $\frac{1}{2}$

May 17<sup>th</sup> 1845.



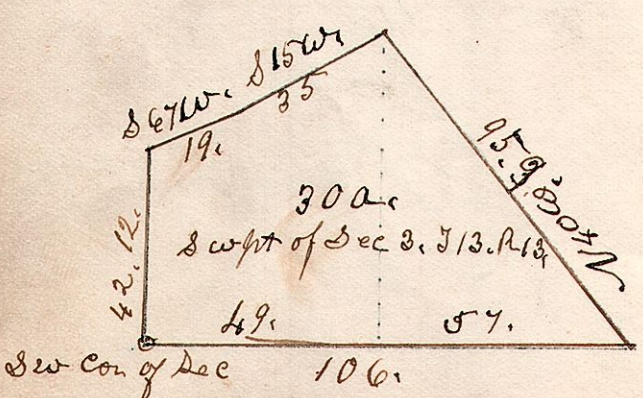
Sec 19, R 8.

8.9.23. 1/2 School October 12<sup>th</sup> 1855.

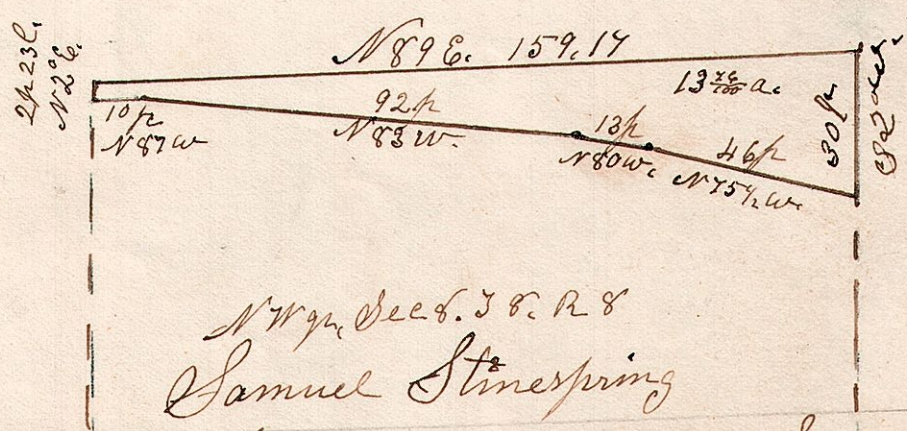


The 1/2 acre piece was Surd for Tobias Moore Oct 10<sup>th</sup> 1857.

13.13.3. Surd for Shos Ewing May 9<sup>th</sup> 1868.



8.8.8. February 8<sup>th</sup> 1872. Sec 8, T 8, R 8. Npt NW.



NW q<sup>r</sup> Sec 8, T 8, R 8. Samuel Stinespring. Surveyed the above north part of the North West quarter of Sec 8 in Township 8 of Range 8, February 8<sup>th</sup> 1872. Samuel Robinson Surveyor.