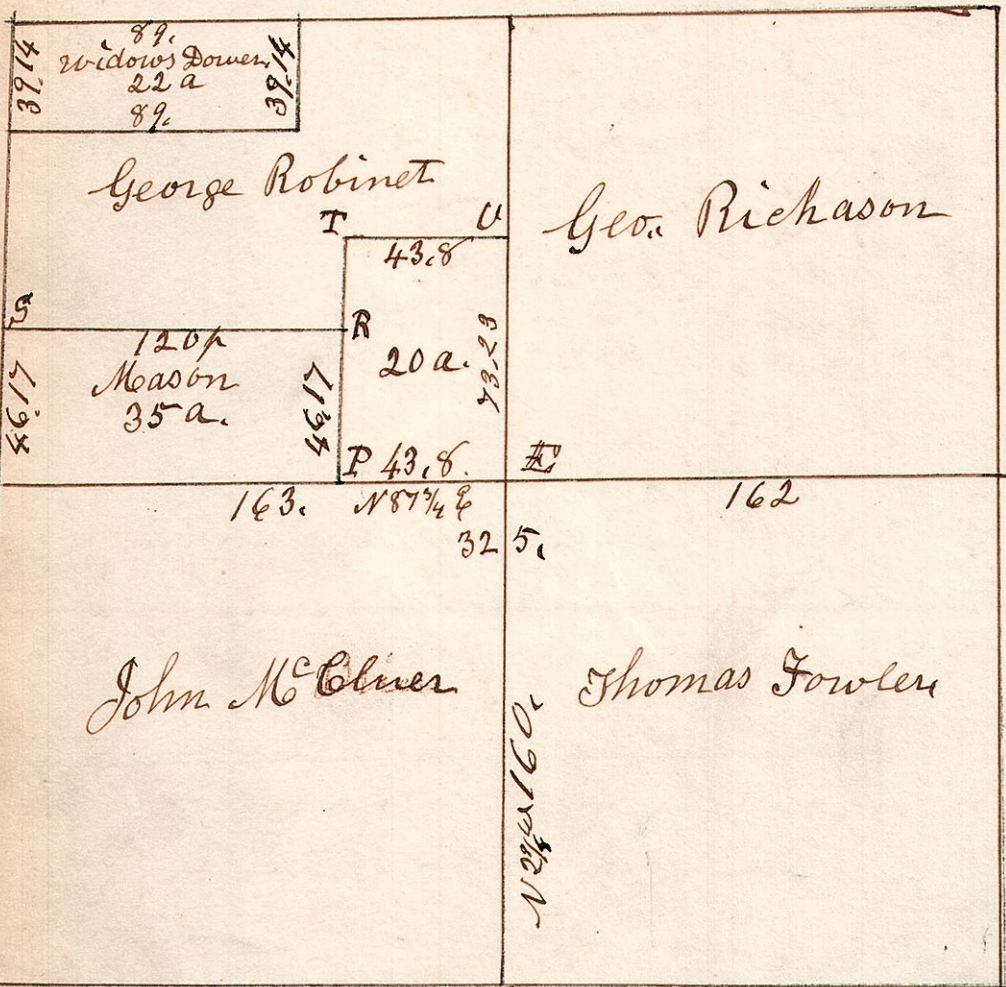


September 11 1827. Surveyed Sec 1
12.14.1. in 1/4 of Range 12. as follows.

Sum 16 S 15 1/2 W 55
B. Oak 5 S 46 E 4 41

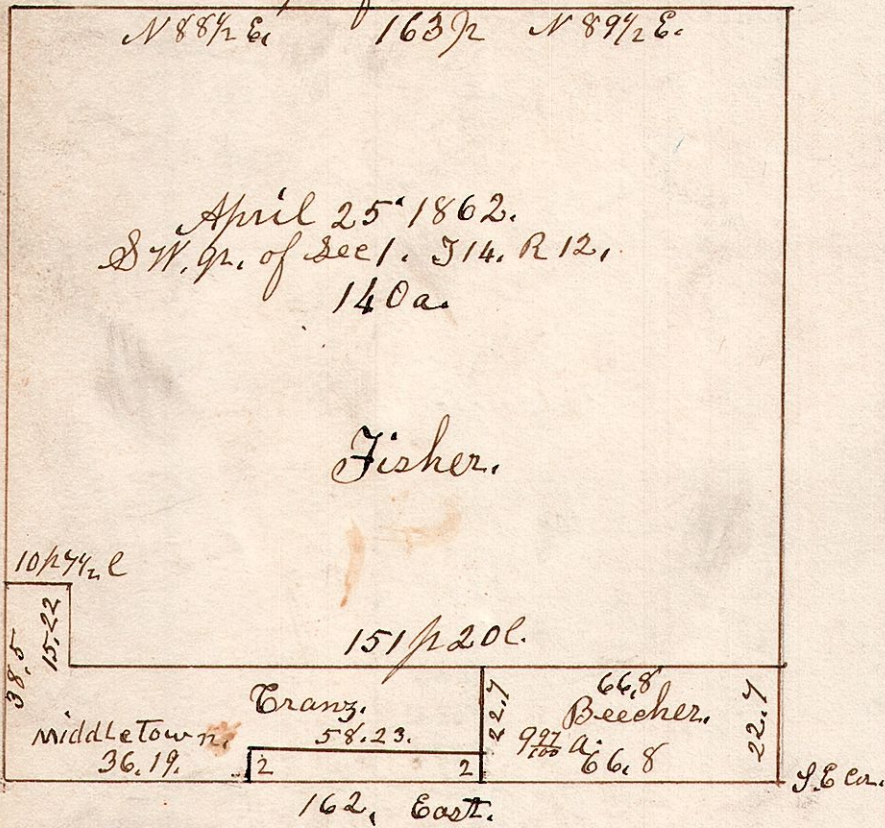


W. Oak 14 N 62 E 21
Do 15 S 62 W 34

- F. Sugar 8. S 32 1/2 E 32. W. Oak 18. N 62 1/2 W 45.
- P. W. Oak 18. N 44 W 10 1/2. Ash 5 S 45 E 8.
- R. Hickory 15. N 69 W 15. Hickory 15. S 69 E 5 1/2.
- S. Hickory 15 N 87 W 33. W. Oak 18 N 14 E 73.
- T. Post in field
- U. W. Walnut 12 N 74 W 25. Sugar 5 S 74 E 14

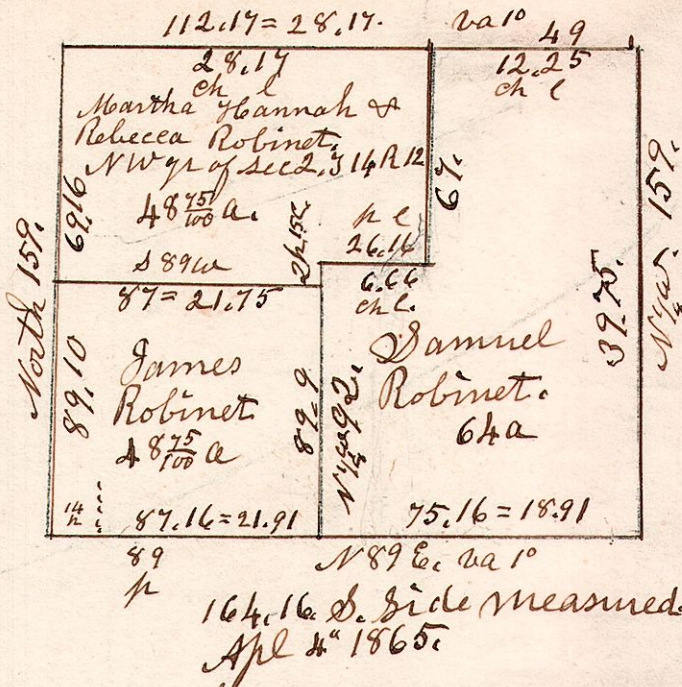
2.2 acres Dower NW 1/4 of NW 1/4
Surveyed Feb 24 1849. Va 1° NW. for Robinet
widow of Geo Robinet
dec.
Va of the lines of E. V. T. P
is 3/4°. Sum Aug 20 1842.

12.14.1. 2nd. April 25 1862. Surveyed the
SW 1/4 of Sec 1. S 14. R 12.
N 88 1/2 E. 163 1/2 N 89 1/2 E.



A	Hickory	12	S 37 E	25
B	Ash	12	N 88 E	45 1/2
"	Do	9	N 45 E	36
C	W. Oak	36	N 70 E	65
"				
D	W. Oak	15	N 4 W	28
"	Hickory	9	S 81 1/2 W	17
E	W. Oak	24	S 11 W	14
"	Do	30	N 88 E	41
F	W. Oak	20	N 32 E	17

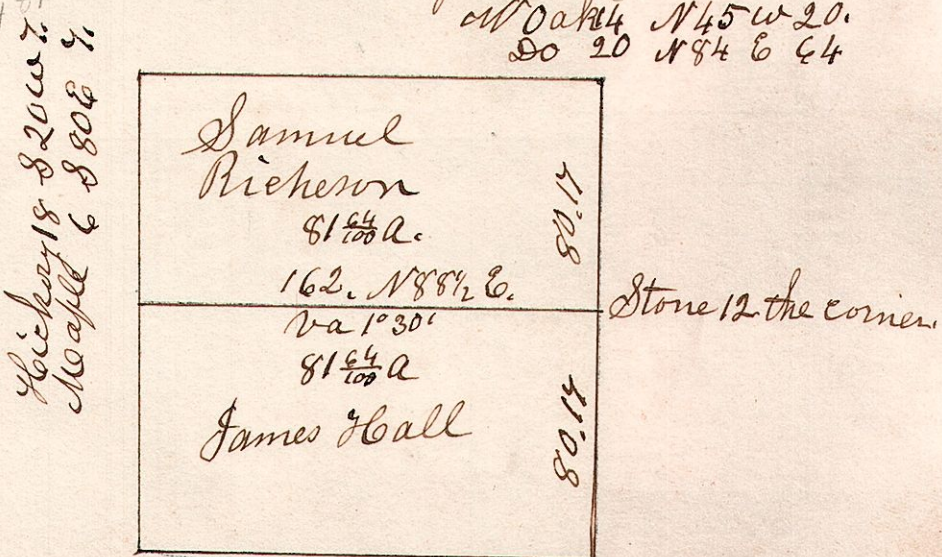
12.14.2. NW 1/4 Sec 2. S 14. R 12.



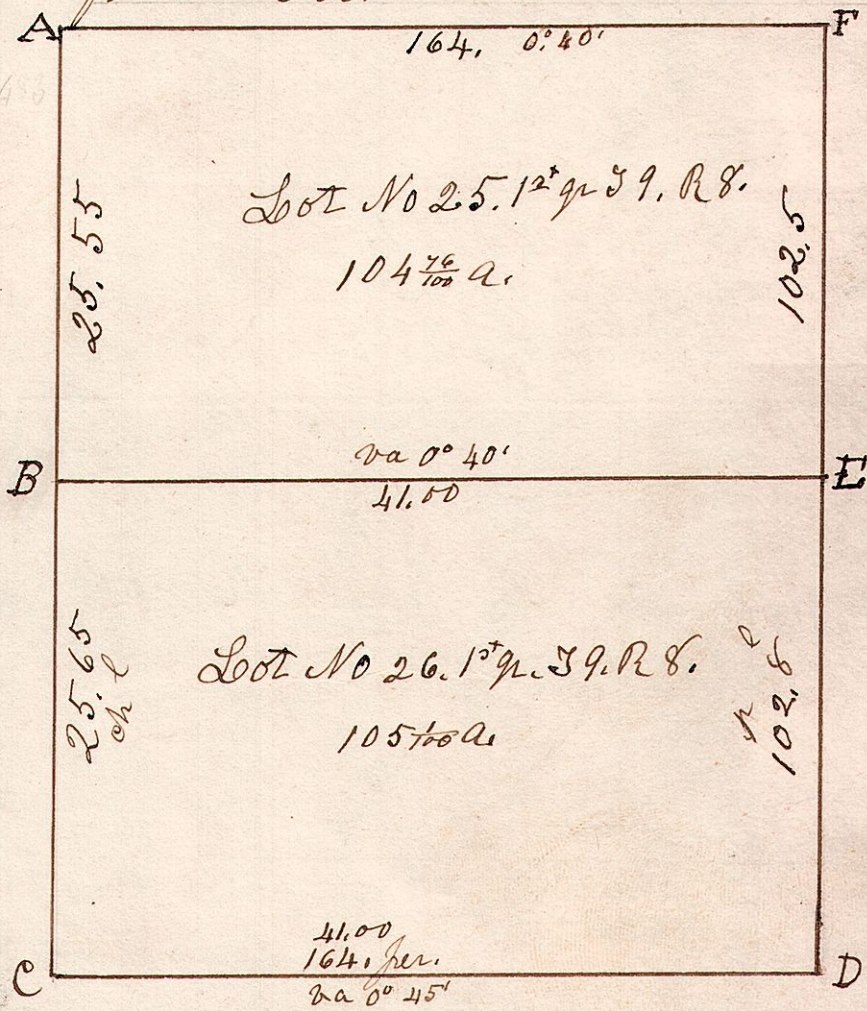
Division of the 64 acre piece made
March 16 1865. and papers left
with Jacob Hinkle.

12.15.35. NW 1/4. December 30 1833.
Surveyed the NW 1/4 of Sec 35.
in S 15. R 12. in the following manner

W. Oak 4 N 45 W 20.
Do 20 N 84 E 64



8.9.25. 1st. Oct 27 1826. Surveyed lots 25 & 26 in the 1st 1/4
S 19. R 8. 41st Sec. Sold for Taxes, Surveyed
for Wm Corn.



Chairmen
David Cantleberry.
James Lisle