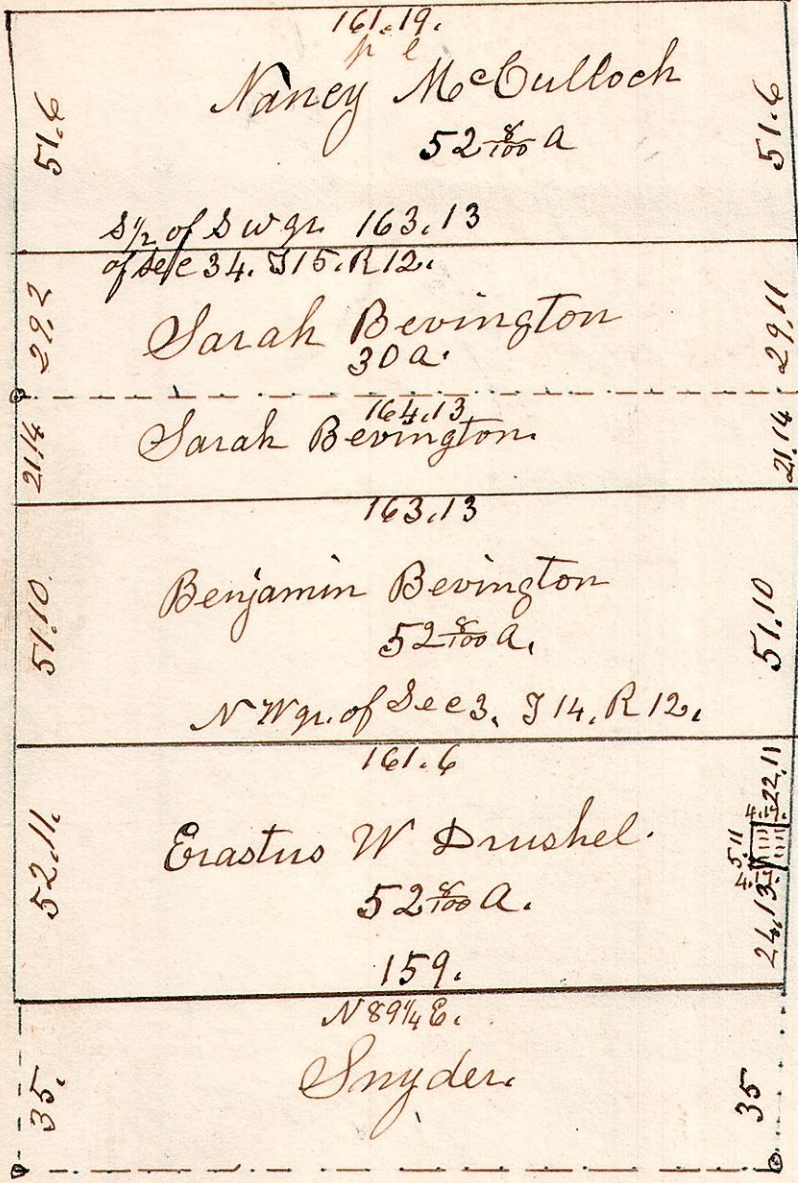


12.15.34.
12.14.3.

April 24th 1868.
In Partition Heirs of
John Wolgamot.



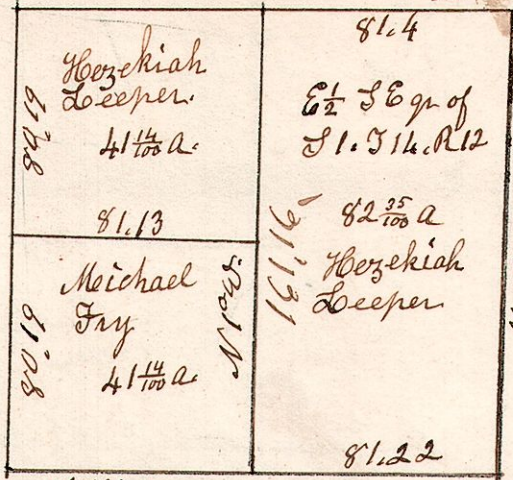
See cor.

gr Post.

Grave
yard.

Henry Pomerene } Leonard Mathews
Geo. W. Slutz } Jacob Bevington
Samuel Robinson } comrs. Chain Carriers.
marker. Benj Bevington.

April 19th 1855. Surveyed the E 1/2.
April 8th 1856 Surveyed the W 1/2.

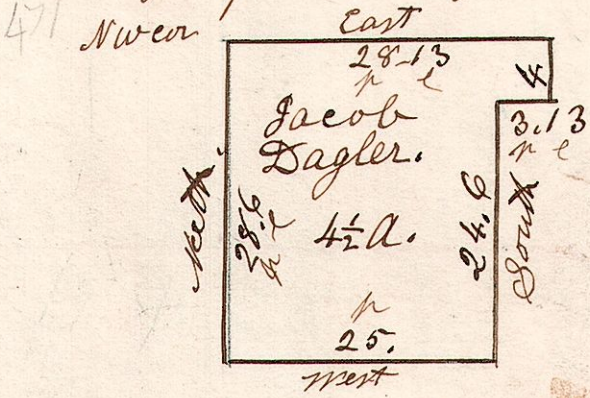


N 89 1/2 E. 163.19
S 1.22.

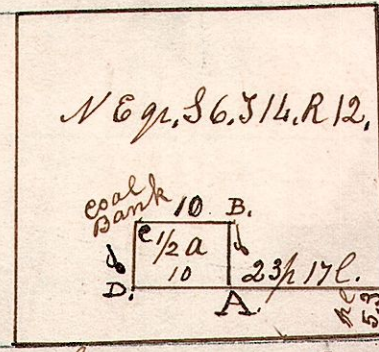
W. Oak 17 N 52 W 5.
Do 18 N 72 E 2 1/2.

B oak 13 S 41 W 15.
W. Oak 15 N 70 W 12, not found.

12.14.5. March 14th 1871.
Surveyed for G. Kilgore.



12.14.6. N.E. cor of Sec 6. T 14, R 12
472



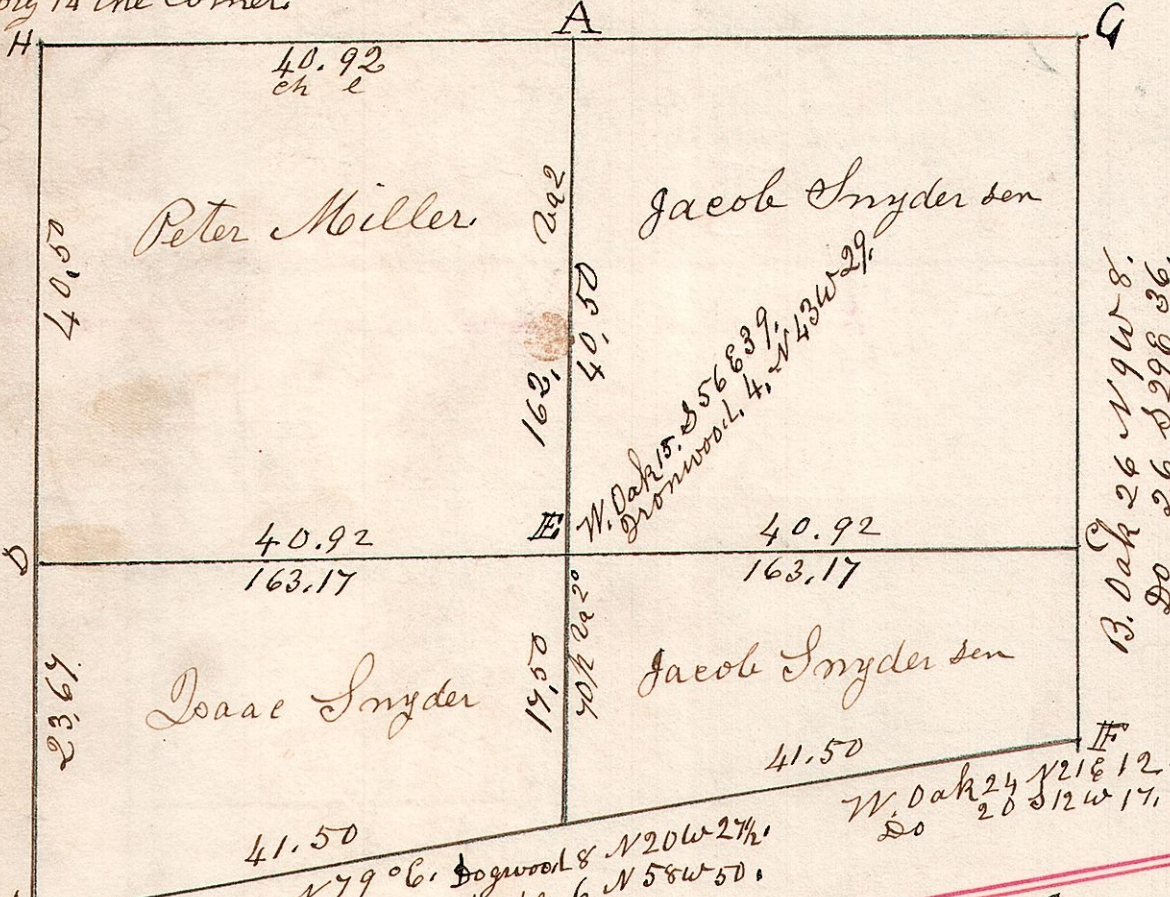
Feb 3rd 1838. Surveyed for Benoni
Dawson, Breenth of Alex Balcy sen dec.
A. Beech 18. S 63 E. 10. at S.E. cor of 1/2 a.
"A" is where they have dng coal.

12.14.9. October 16th 1828. 1.
Surveyed Section 9 in T 14, R 12.
In manner as follows.

Hickory 14 the corner

Ash 6 S 38 1/2 W 32. W Oak 15 S 53 W 14.
W. Oak 14 N 32 E 19. Do 24 N 44 E 29.

Maple 10 N 77 W 26.
W. Oak 16 S 17 E 6.



Elm 5 S 38 E 4.
Gronwood 15 N 57 W 8.

N 79° E. Dogwood 8 N 20 W 2 1/2.
Maple 6 N 58 W 50.

- D B. Oak 30 N 45 W 5
- E W. Oak 20 S 70 E 26
- F Gum 8 S 88 E 17
- A W. Oak 30 S 72 E 16
Do 24 N 18 W 16
- B B. Oak 13 S 1/4 W 15
- " W. Oak 15 N 70 E 12
- C W. Oak 14 N 21 W 11

June 28th 1825.

12.14.12. Surveyed the E pt. of Sec 12. T 14, R 12.

