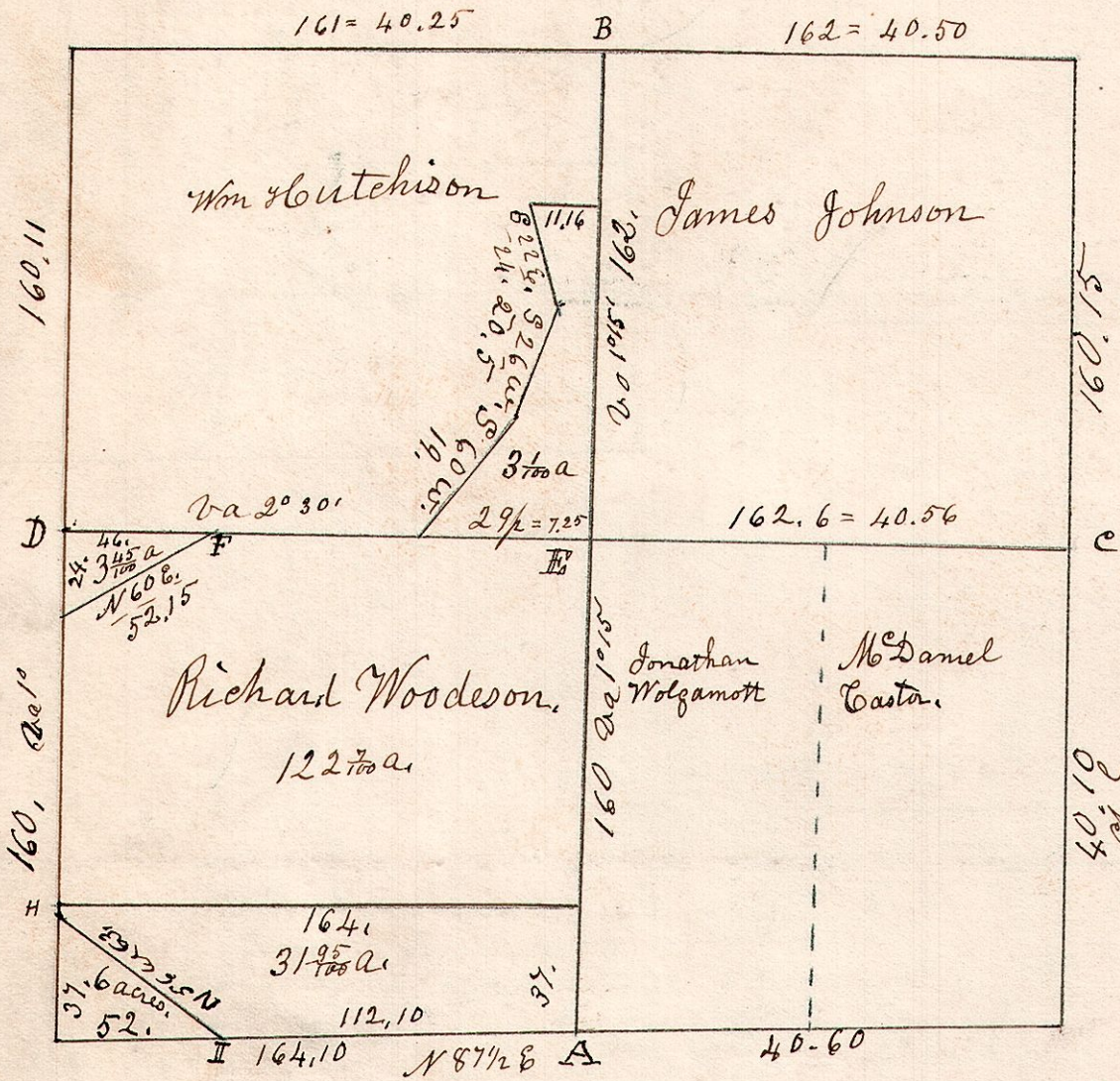


12.15.32

January 6<sup>th</sup> 1834. Surveyed Sec 32 S 15. R 12.  
in the following manner for the following persons.



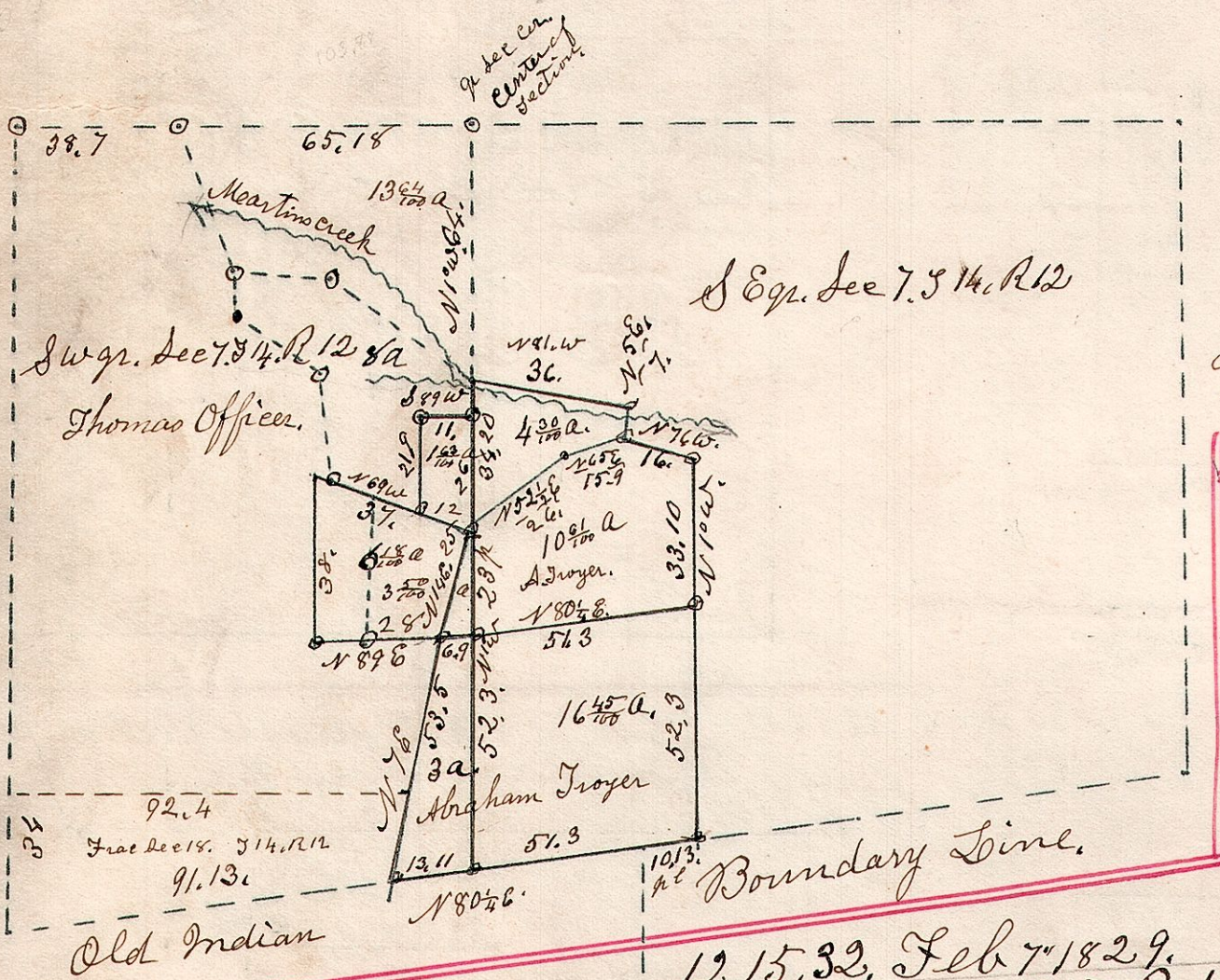
F. Stone 9<sup>th</sup> the corner.  
G. Stone 15 the corner.  
H. Stone 10 the corner.  
I. Limestone 6 the corner.  
A. Hard Head Stone 6 the corner.

E. Maple 20 N 27 W 5.  
" Sugar 12 S 3 E 45.

John Merum } Chain carriers  
John Studer }

N.B. the 6 acre piece is Geo Armstrong's  
the 3 1/2 acre piece is - Denning's.

12.14.7. Surveyed February 20<sup>th</sup> 1852.

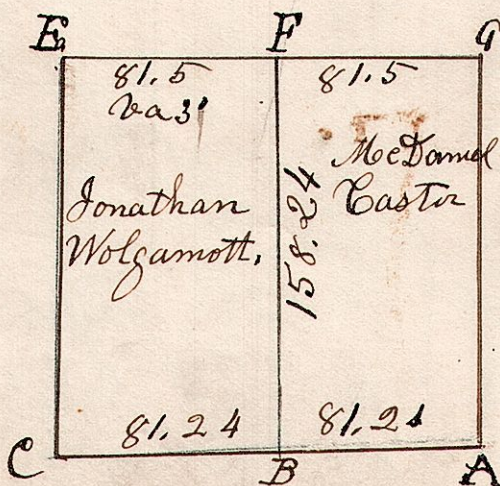


Robert Cole 6 1/2 a.  
Joseph Summers 1 1/2 a.  
do do 4 1/2 a.

Joseph Summers 8 acre piece.  
dotted lines, surveyed  
Sept 18<sup>th</sup> 1852.

12.15.32, Feb 7<sup>th</sup> 1829.  
S.E. qr. Sec 32, S 15, R 12

E. Maple 20 N 25 W 3,  
" Hickory 12 S 20 E 27.  
G. Gum 6 S 80 E 34,  
" Poplar 7 S 21 E 20,  
B. Ash 15 N 86 E 34



C. W. Oak 24, S 12 W 32,  
" Hickory 9 N 34 E 16,  
A. W. Oak 40 N 51 E 28,  
" Beech 20 S 55 W 15,  
F. Gum 6 N 67 W 13,  
" Hickory 18 S 87 W 18.