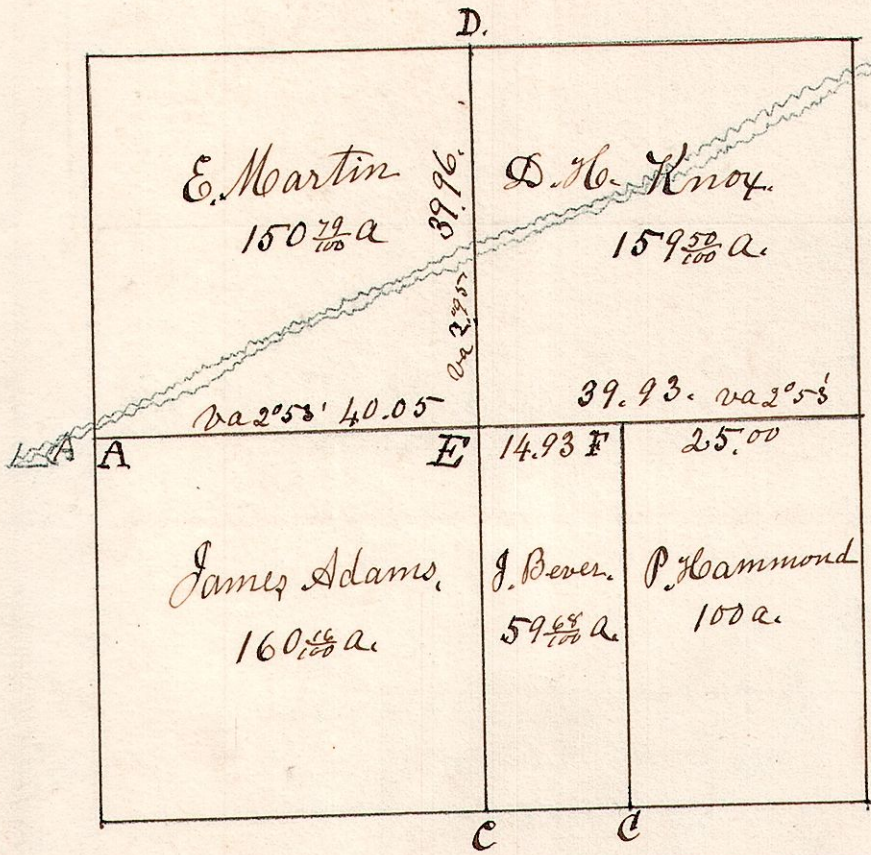


T 11. 3/4 13. R 13.

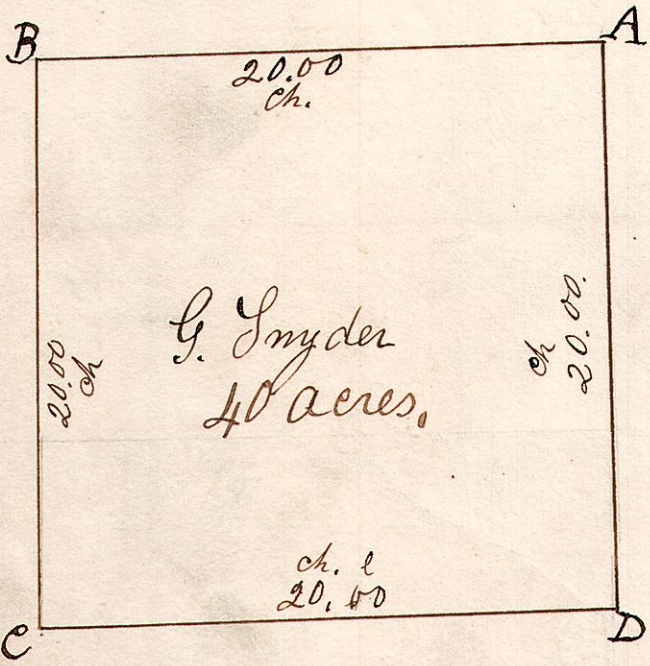
13, 13, 11.



- A. Sycamore 30, the corner.
- B. Dogwood 6. S 60 W 8. Do. 7. N 60 1/2 E 20.
- C. Maple 10 N 42 E 30. W Oak 18. N 69 W 26.
- D. W Oak 20. West 30. W Oak 4. S 31 E 14.
- E. W. Oak 12. S 23 W 20. W. Walnut 8. N 43 W 14.
- F. — 24 N 50 E 30. — 14 N 15 W 33 Stone.
- G. — N 12 E 20. 40 — 15 S 14 W 27 Stone.

Surveyed the above Jan 7th 1826, Being Section 11. in Township 13. of Range 13. of which the above is a correct plat.
Samuel Robinson Co Surveyor.

12. 14. 3. N.E. 1/4 of the S.E. q. of Sec 3. T 14. R 12.

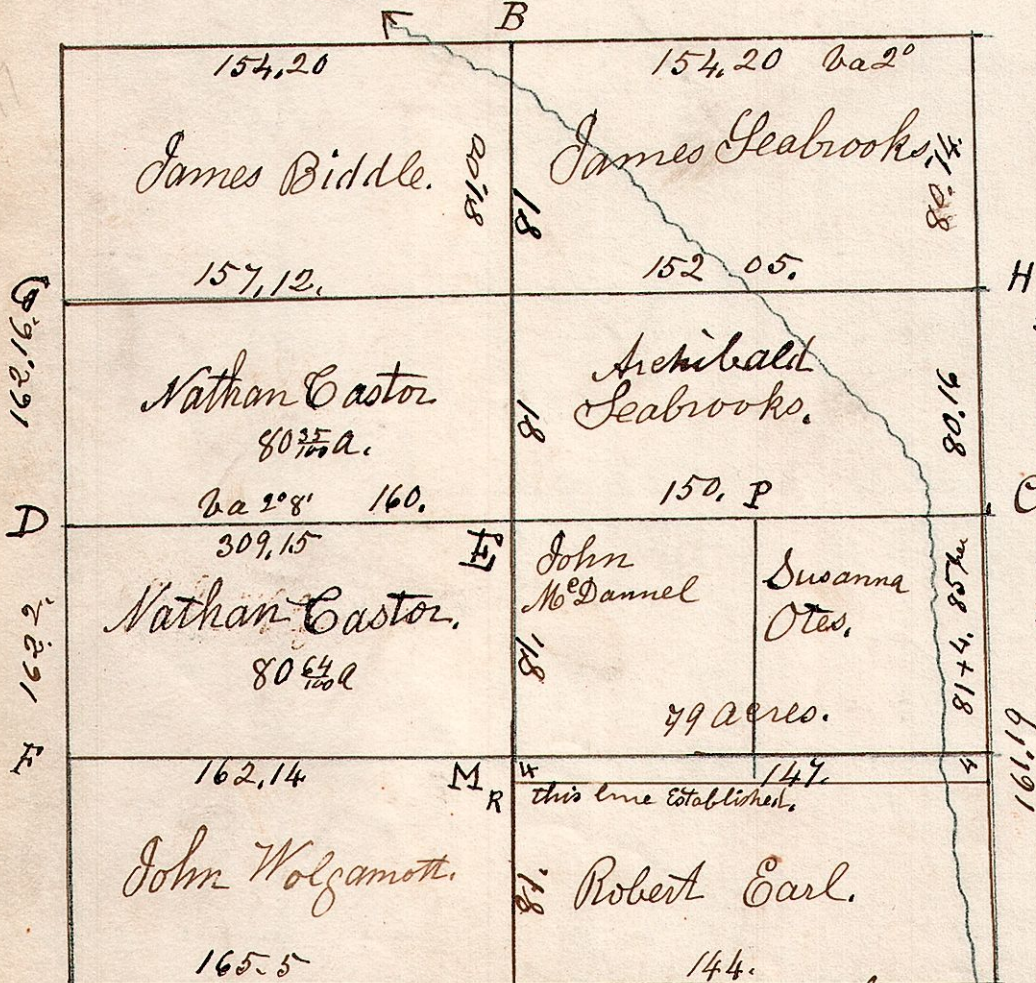


- A. W. Oak 14. N 69 W 25.
- B. W. Oak 18. N 38 W 9.
- C. W. Oak 24. S 36 E 11.
- D. W. Oak 12. S 27 W 6.

Surveyed the above December 10th 1825, Being the north east part of the South quarter of Section 3. in Township 14. of Range 12. of which the above is a correct plat of the same.
Samuel Robinson Co Surveyor.

13. 15. 34. March 23rd 1831. Surveyed Sec 34. in 1/4 15. of Range 12. in the following manner & the following persons.

- W oak 15. S 20 E. 4.
- Gum 11. N 41 W 22.
- B. Oak 12. N 60 W 43.
- elm 40 S 16 E 34.
- Beech 10 S 30 W 20.
- Maple 14 S 76 E. 7.



- F Maple 18 S 72 E 61
- " Gum 8 N 85 E 63
- G Ash 8 S 52 E 7
- H Elm 12 N 52 E 17
- H Hickory 18 S 21 W 7
- " Maple 5 S 77 E 7
- L Maple 36 N 21 E 15
- " Elm 12 S 74 W 23
- M W. Oak 22 S 52 W 39
- " Do 15 N 17 W 12

Corner A. uncertain, original bearing tree not found.

E. Post the corner

- Gum 6. N 64 E 18.
- W. Oak 9. S 48 W 26.
- W. Oak 20. N 60 E 41.
- Do 16. N 8 W 43.
- B. Oak 30 S 52 E 17.
- Ash 7 East 20.