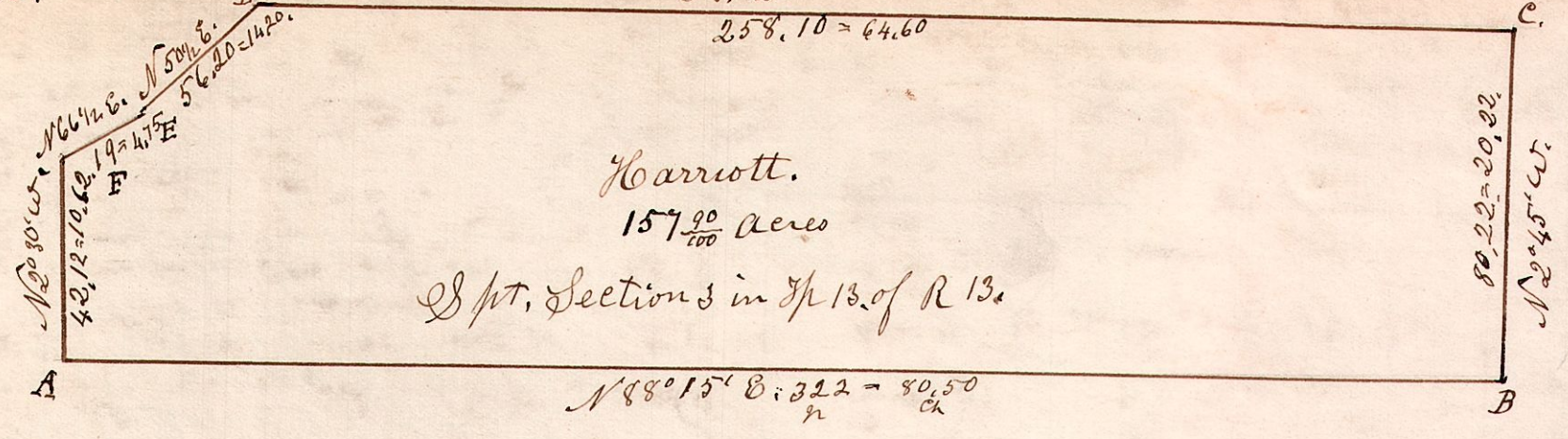


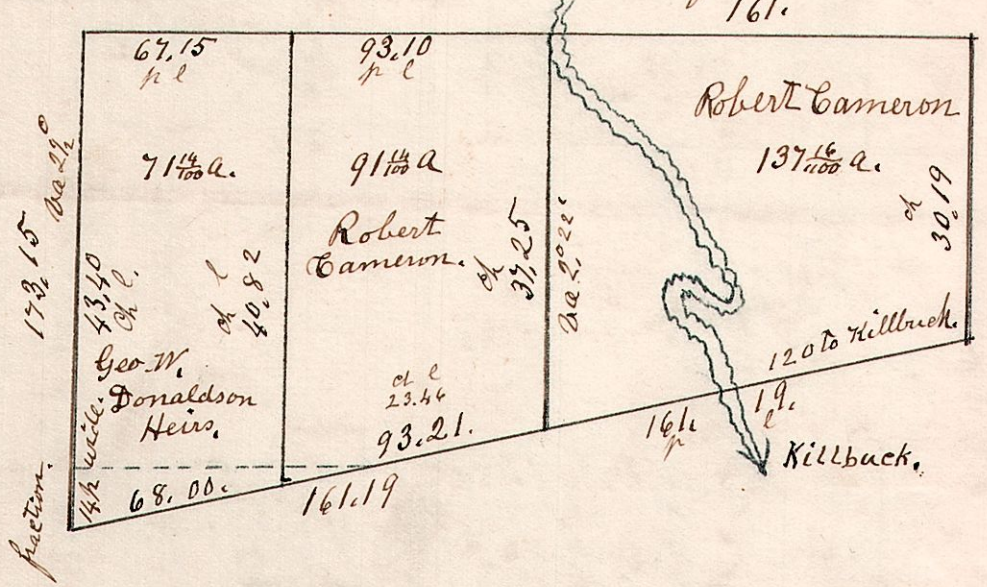
13.13.3. June 6th 1832. Surveyed the South part of Section 3. Township 13. R. 13.



A Sugar. 20. S 12 E 50. B. W. Oak. 18 S 78 E 16. Cherry. 12. S 62 W 21. D Post in Road. E Sugar 20 S 25 E 40.
 " Elm. 18. N 26 W 44. " Elm. 8 S 8 E 40. B Jack. 4. N 81 W 36. E Post in Road.

13.13.15.

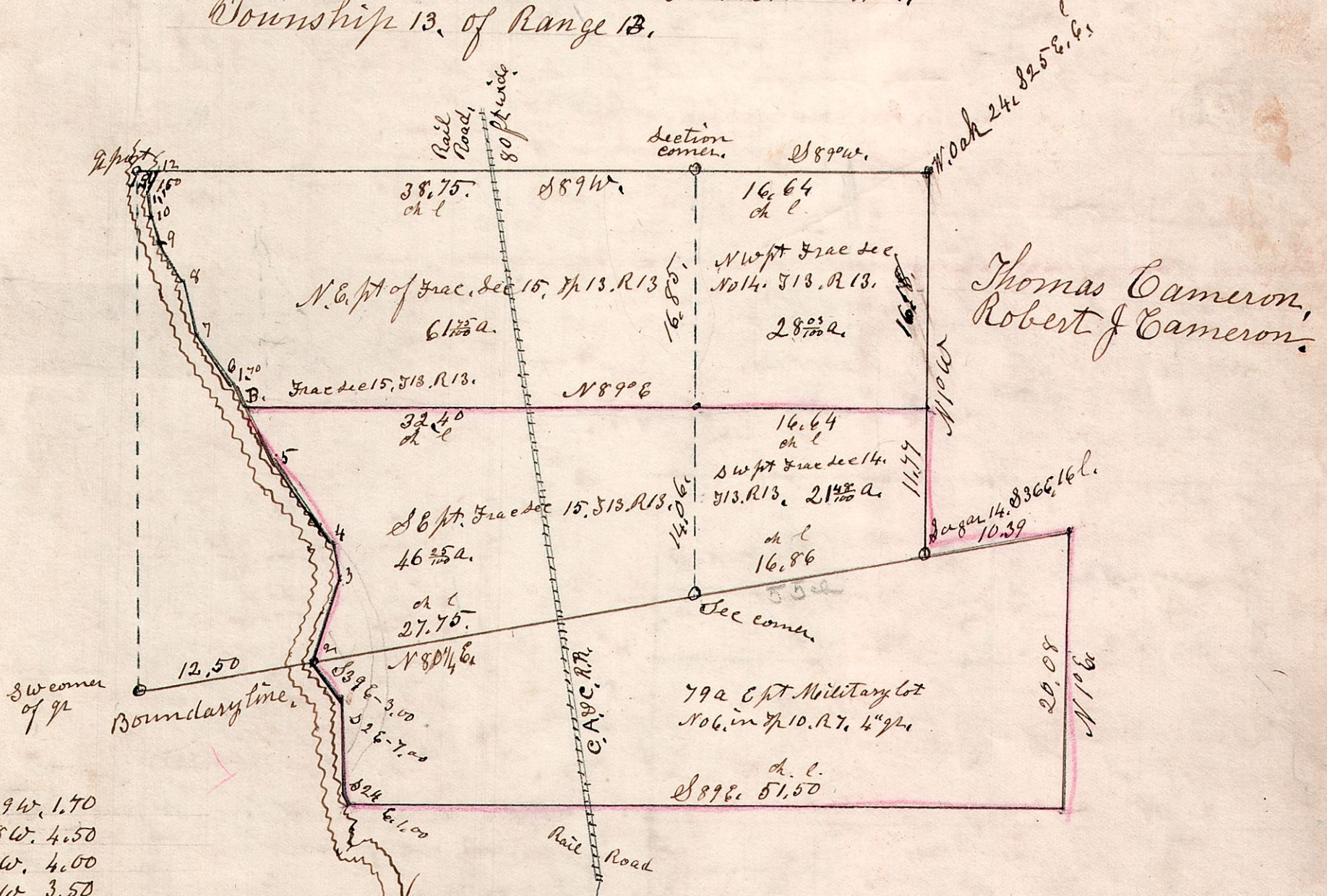
Fractional Section 15. in T 13. of R 13.



Surveyed Jan 30th 1841.

13.13.14 & 15.

April 19th 1856. Fractional Section 13 & 14, Township 13, of Range 13.



- 1. N 29 W. 1.70
- 2. N 38 W. 4.50
- 3. N 16 W. 4.00
- 4. N 37 W. 3.50
- 5. N 17 W. 2.00
- 6. North. 1.50
- 7. N 24 E. 1.70

- South from Corner D. S 29 E. 4.80
- 5 S 37 E. 7.00
- 4 S 17 E. 2.50
- 3 S 16 W. 6.50