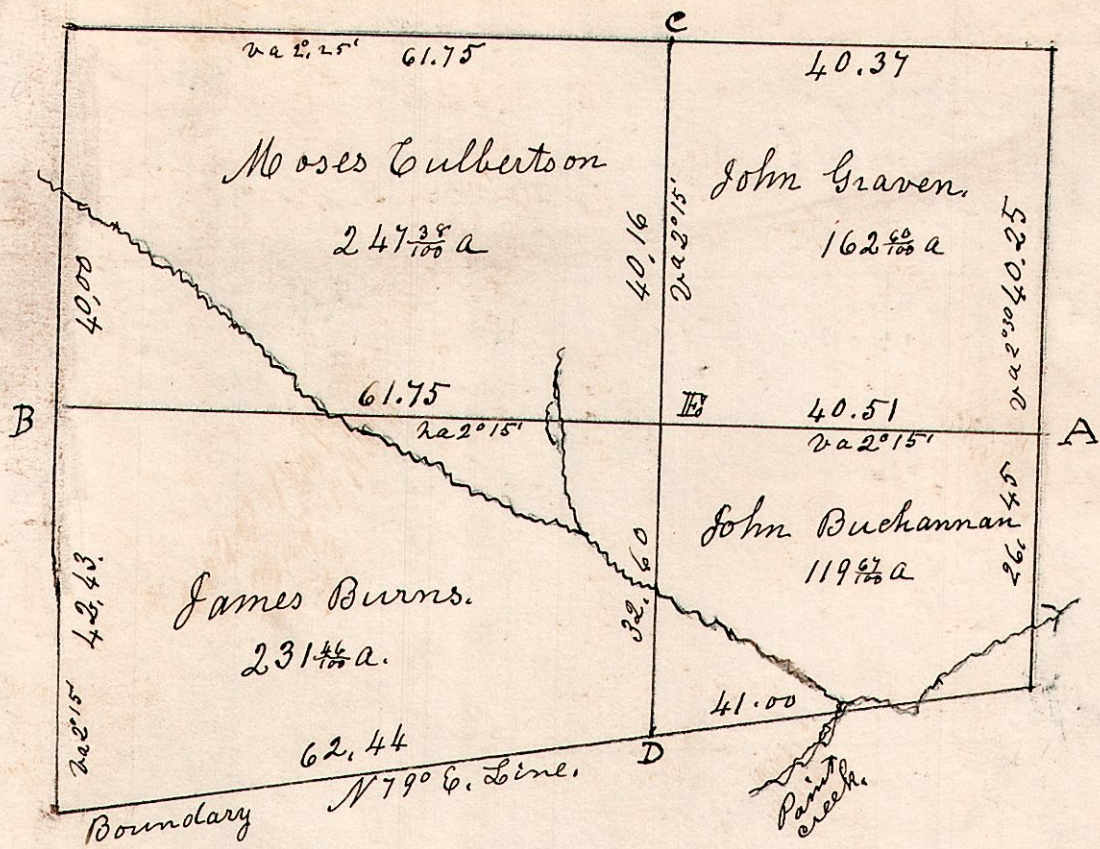


13. 13. 18.

S 18... T 13... R 13.



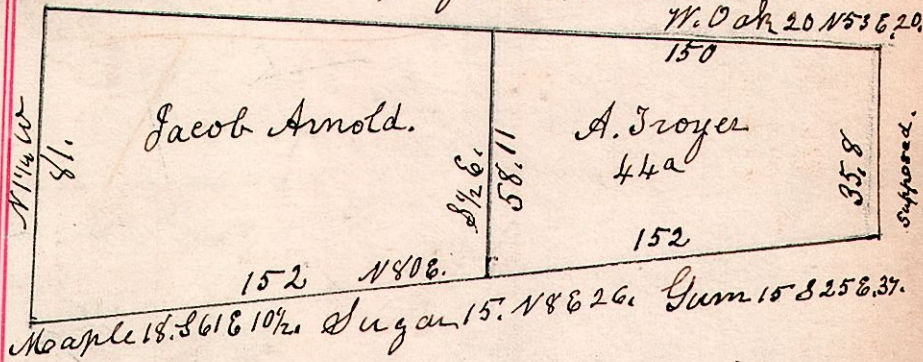
13. 13. 13.

Sec 13, Tp 13, R 13.

137

Nov 9<sup>th</sup> 1854.

Sugar 12 the corner.

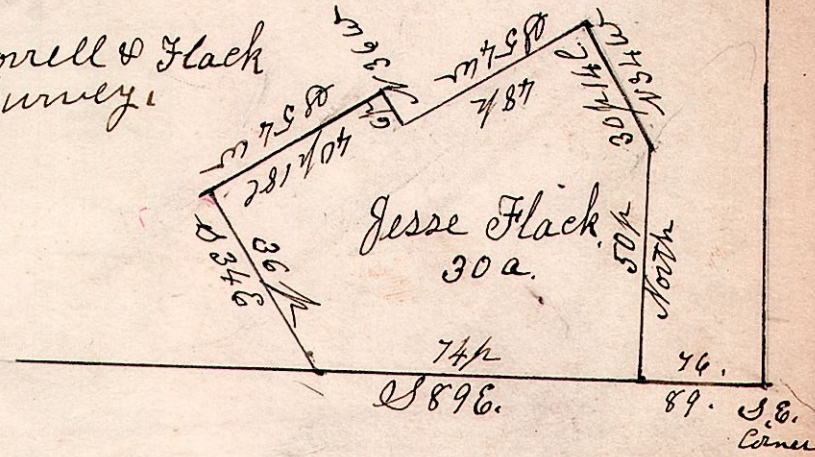


13. 13. 7.

N.W. q. of S 7, T 13, R 13.

November 12<sup>th</sup> 1868.

Gorell & Flack  
Survey.



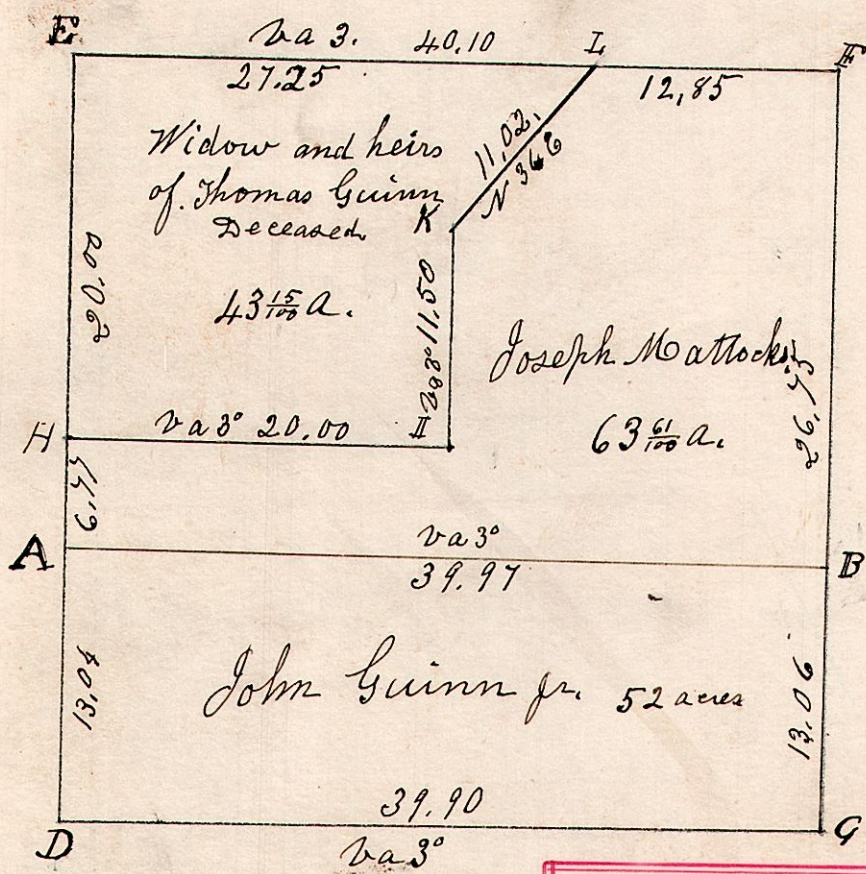
A	W. Oak	9	S 6 W	24
"	Do	18	N 14 1/2 W	13
B	W. Oak	24	N 88 W	8 1/2
"	Do	5	S 15 1/2 E	29
C	R. Oak	36	S 74 1/2 W	21
D	W. Oak	20	N 83 1/2 E	42
"	elm	16	N 21 E	52
"	Linn	24	N 44 1/2 W	42
E	Linnwood	5	N 80 1/2 E	9
"	Hickory	10	N 36 1/2 E	24 1/2

Surveyed the above December 12<sup>th</sup> 1826, being Section N<sup>o</sup> 18, in Township 13 of Range 13, of which the above is a correct part of the same.

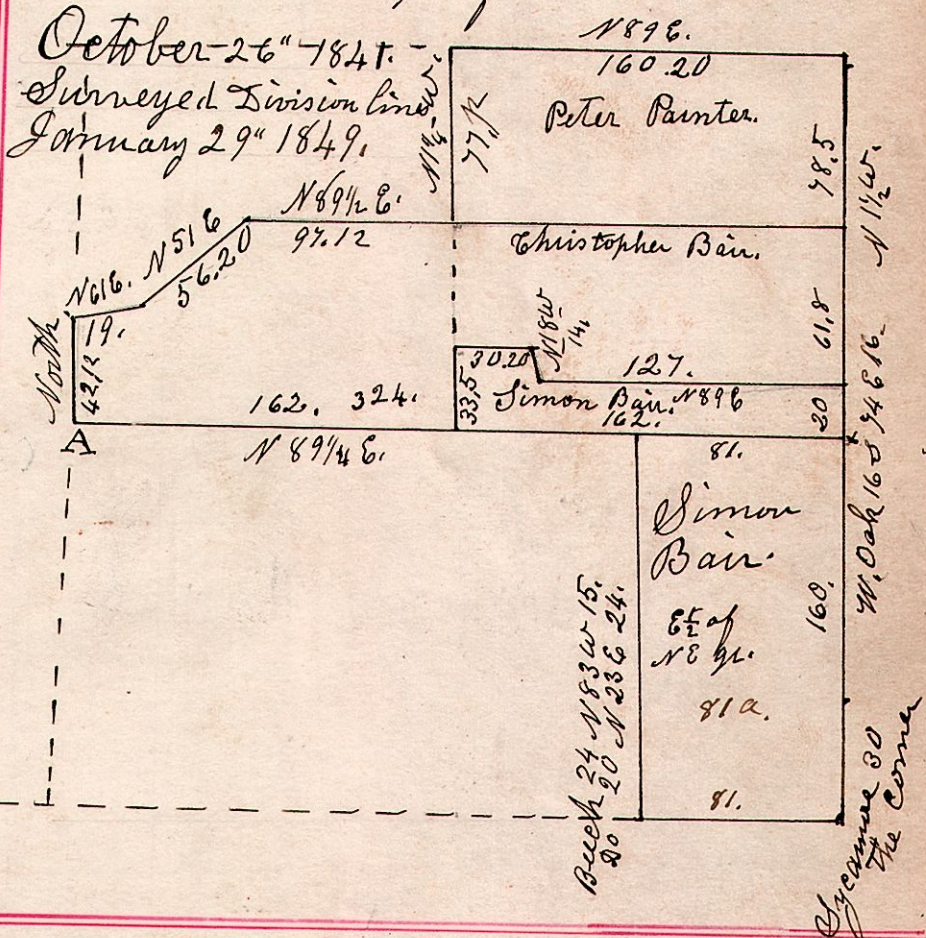
Samuel Robinson  
County Surveyor.

13. 13. 2.

N.E. q. of S 2, T 13, R 13.



13. 13. 3. South pt of Sec 3, T 13, R 13.



13. 14. 32 near

elm 7 S 10 1/2 W 51.  
S. Oak 5 N 32 E 31.

W. Oak 5 S 51 W 25.  
do 4 N 51 E 35.

W. Oak 10 S 31 E 31.  
do 11 N 60 E 17.

E	Beech	15	East	35
"	W. Oak	6	N 35 W	13
H	W. Walnut	6	S 52 1/2 W	21
"	B. Eye	6	N 34 W	30
I	W. Walnut	4	S 57 W	39
"	Cherry	5	S 12 W	71
K	W. Oak	15	N 79 W	9
"	Do	24	N 56 E	23
L	Sugar	13	S 54 E	22
"	Beech	24	S 88 W	43
F	Beech	9	N 80 W	10
"	Maple	15	S 7 1/2 E	26
"	Maple	15	S 7 1/2 E	26
"	Hickory	12	S 57 1/2 W	13
U	W. Oak	10	N 55 W	30
"	Cherry	6	East	9
D	W. Oak	12	N 74 1/2 E	23
"	Do	12	S 5 W	20 1/2
A	W. Oak	30	S 7 W	21
"	Hawthorn	3	N 32 E	9

