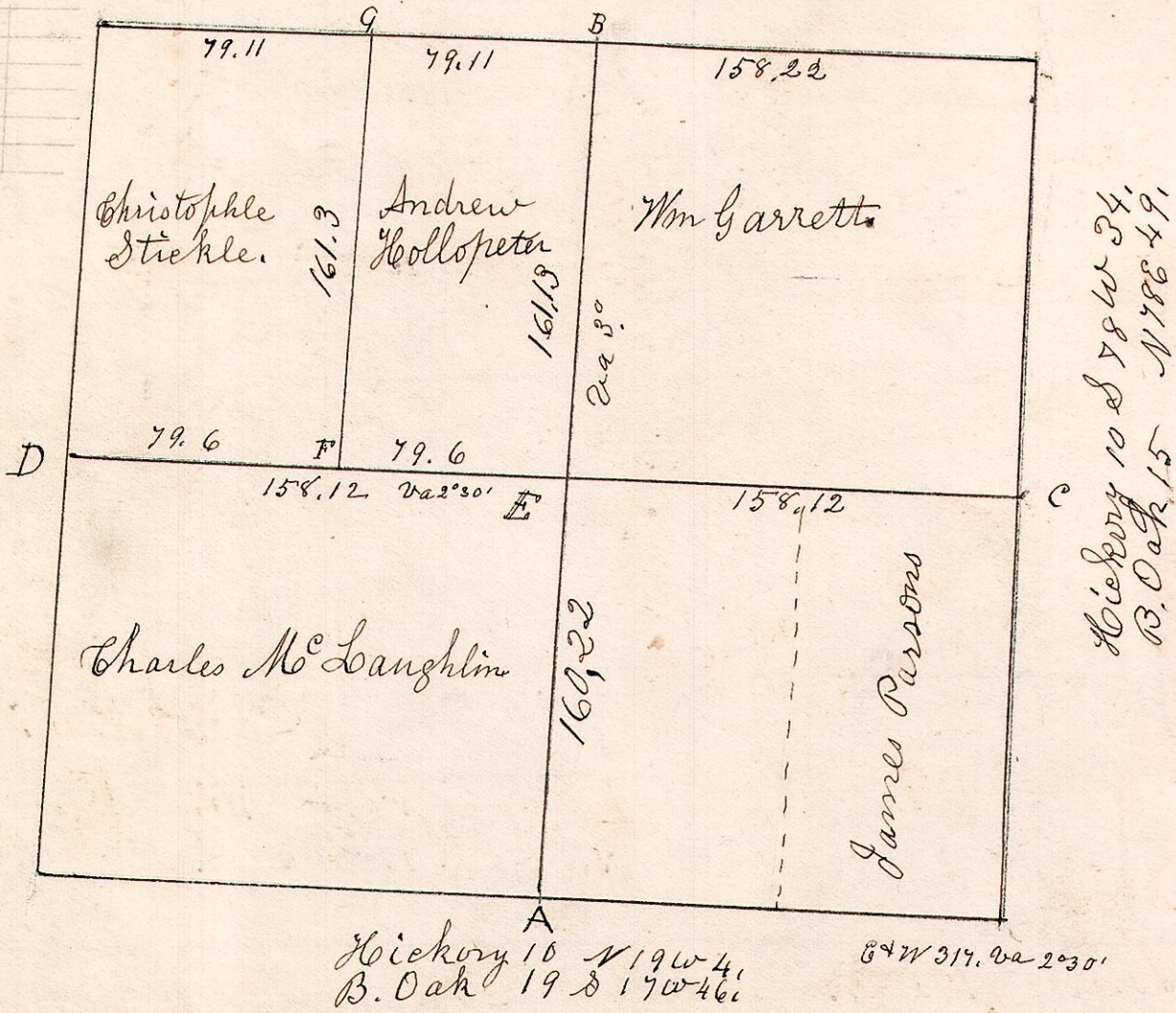


January 21st 1830. Surveyed Section No 4. in T¹⁷ of Range 14.
 In the following manner and for the following persons.

14.17.4.

E	B. Oak	3	N 80 E	9
F	do	3	West	16
G	W. Oak	30	S 74 E	44
	R. Oak	12	N 50 W	13
	W. Oak	20	N 10 E	16
	B. Oak	3	East	8

B. Oak 4 S 7 E 17.
 Chestnut 4 N 1 W 9.



B. Oak 8 N 48 E 18.
 Hickory 4 N 54 W 89.

Hickory 10 S 78 W 34.
 B. Oak 15 N 78 E 49.

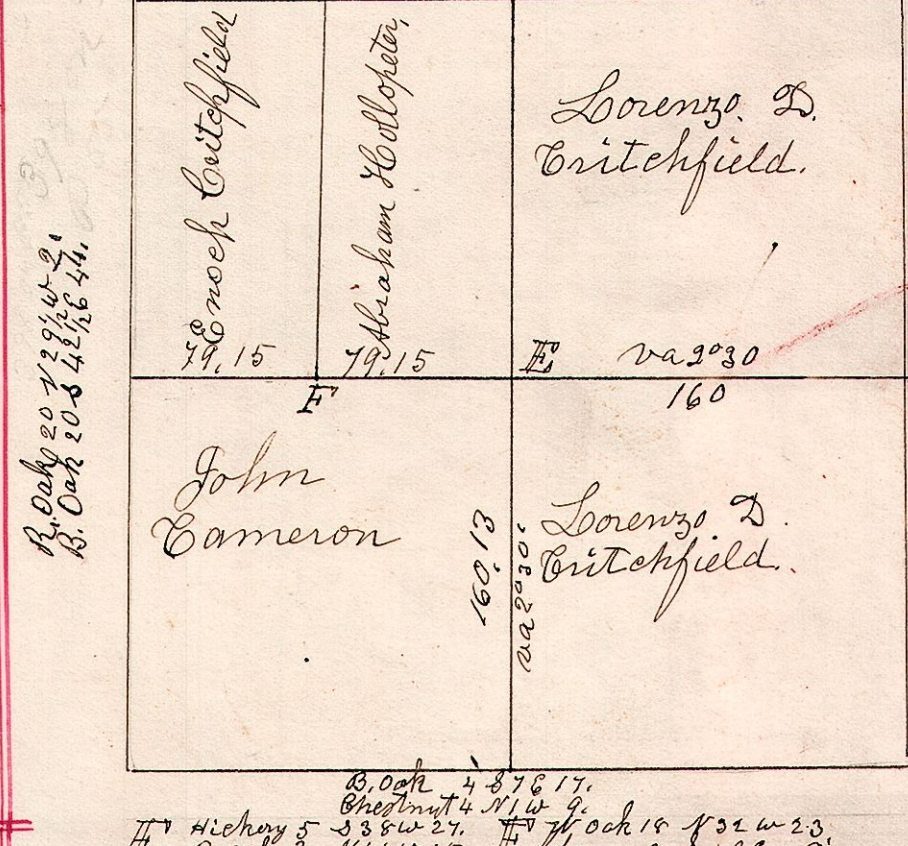
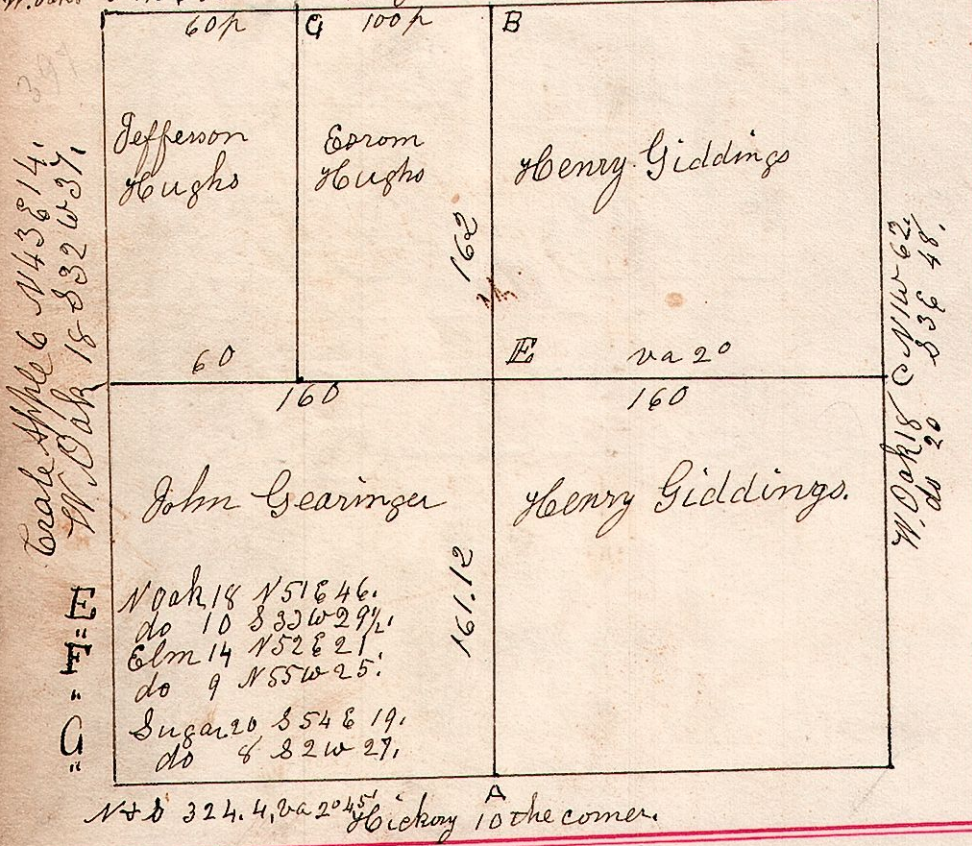
Hickory 16 N 19 W 4.
 B. Oak 19 S 17 W 46.

84 W 317. Va 2030

14.18.26.

January 19th 1830 Surveyed 26. J 18 R 14.

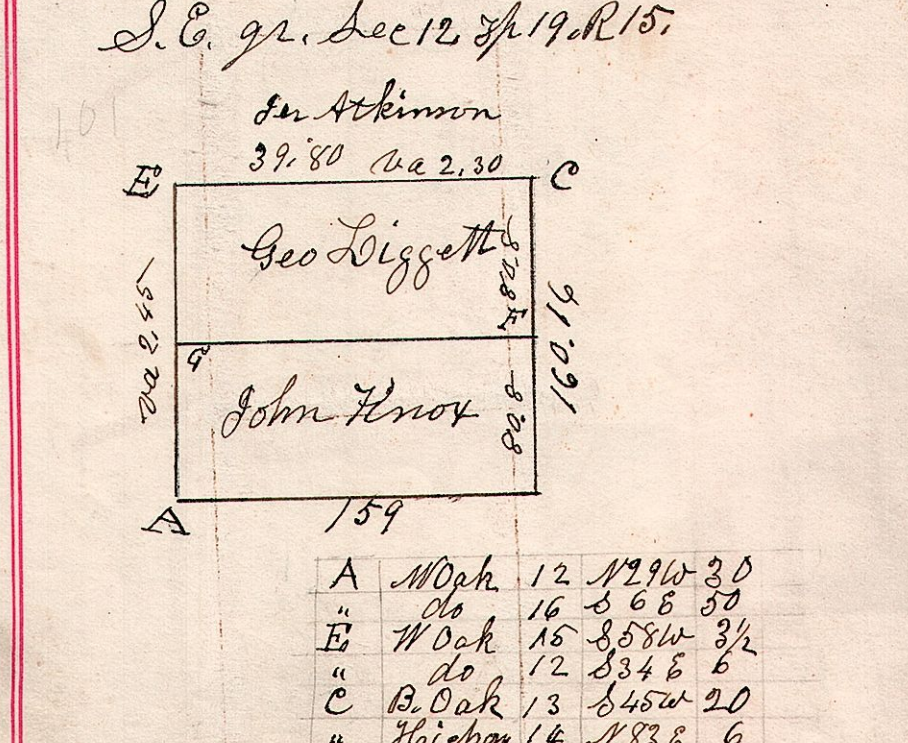
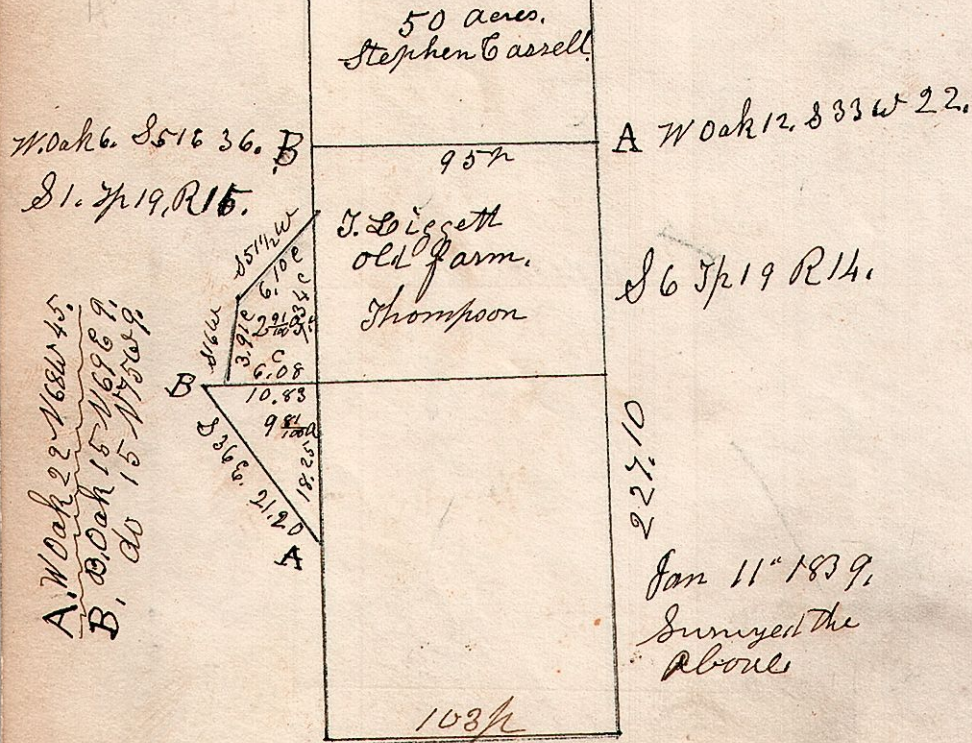
14.18.33 June 12th 1832. Surveyed Dec 33. J 19. R 14.



14.19.6

n. e. 93.10

15.19.12. January 11th 1839.



A	W Oak	12	N 29 W 30
"	do	16	S 68 50
E	W Oak	15	S 58 W 3 1/2
"	do	12	S 34 E 6
C	B. Oak	13	S 45 W 20
"	Hickory	14	N 83 E 6
F	B. Oak	22	N 19 E 32
G	W. Oak	8	N 29 W 12

Jan 11th 1839.
 Surveyed the above