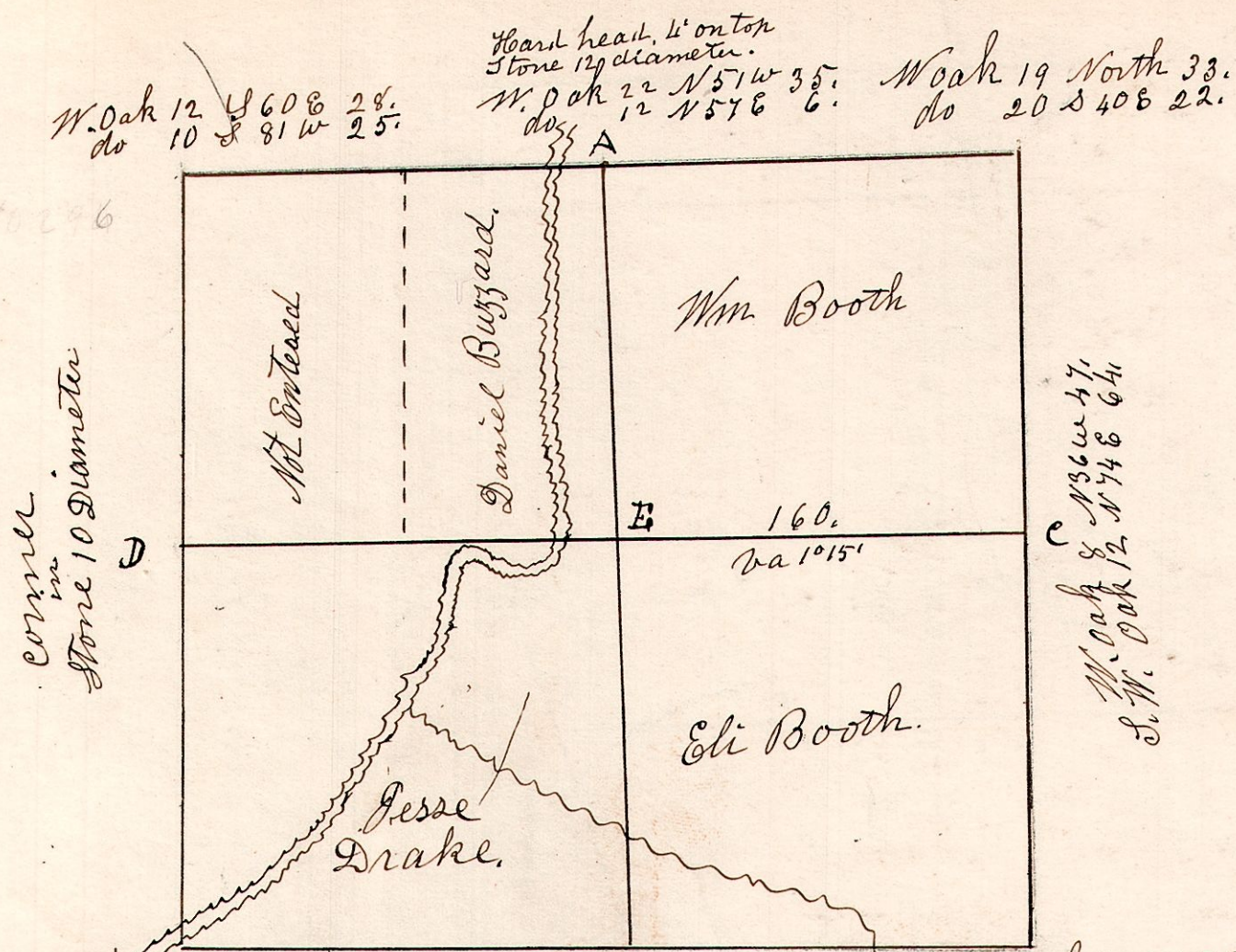


15.19.4.

March 9th 1827 Surveyed Sec 4. T19. R15.

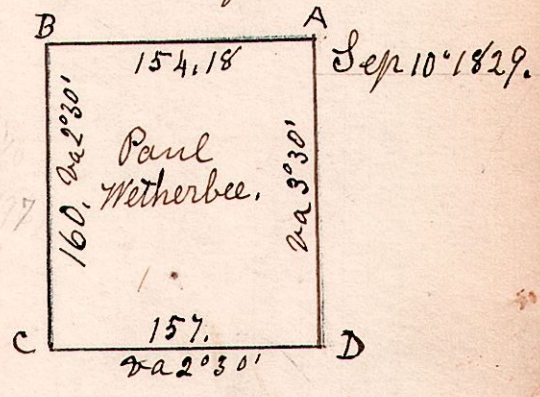


Sycamore 36. S 36 E 11.
 W Elm 20. S 35 W 52.
 E W. Oak S 15 1/2 20.
 " do North 48
 Sand Stone, flat sharp corner
 up 00, marked on the sides.

B 320.5
 B. Walnut 6 S 49 W 16.
 R. Elm 5 N 88 E 30.
 Sand Stone corner,
 18" square,
 1/4 marked on it, set out on end.

W. Oak 4 S 65 E 7.
 do 6 West 31.

15.20.30. Surveyed the NW qr of S30 in T20. of R15.



A	W. Oak	16	N 22 E	95
"	do	16	N 7 W	81
B	B. Oak	12	N 60 E	20
"	do	8	N 22 E	25
C	B. Oak	15	N 21 E	47
"	do	8	S 59 E	41
D	W. Oak	10	S 71 E	5

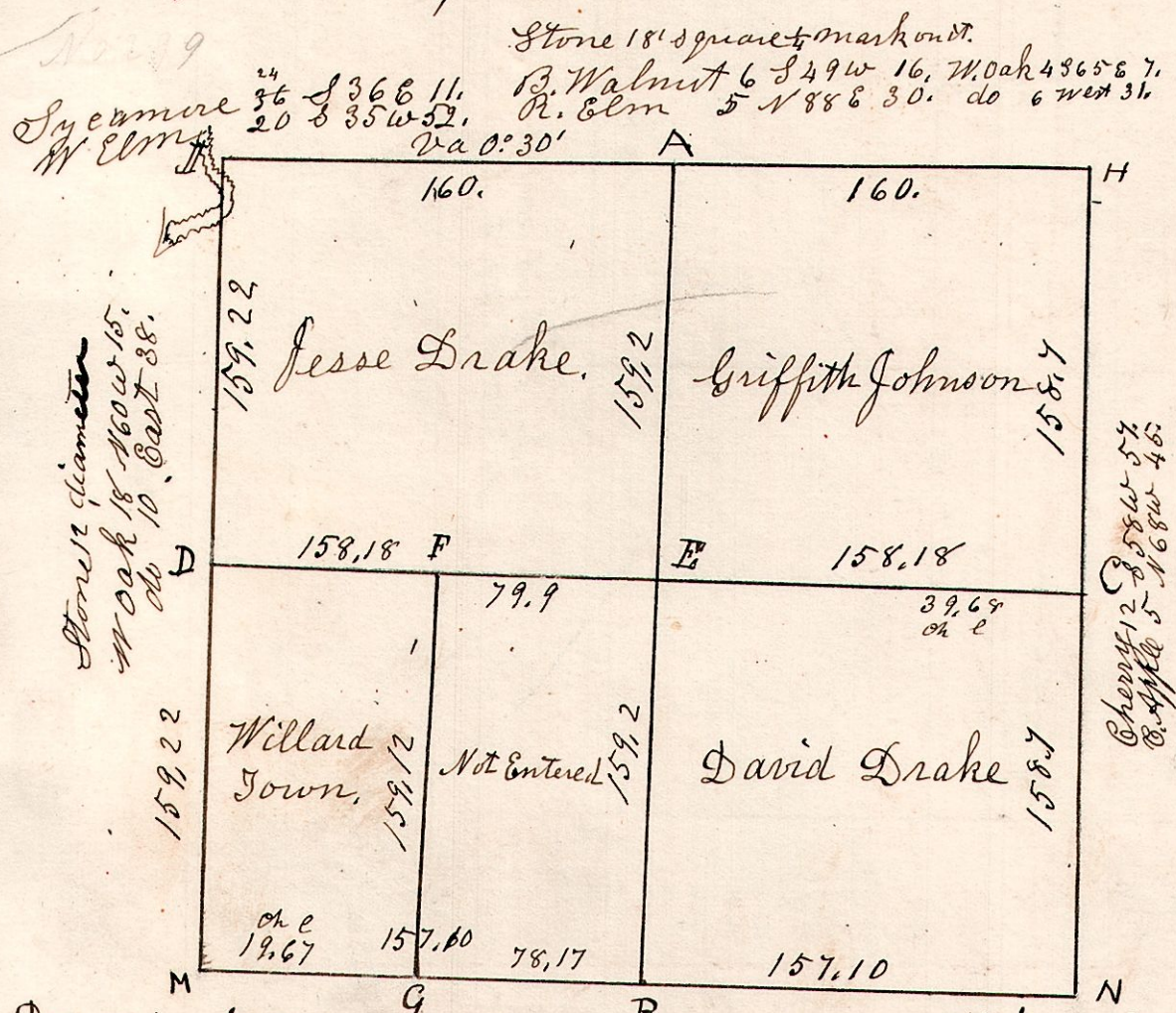
The above is Samuel Robinson Survey Taken May 12 1874.

B.	W. Oak	14	N 77 1/2 W	49 1/2
"	B. Oak	8	S 21 W	48
A.	R. Oak	16	N 8 W	23 1/2

No bearing trees to be found at "B, but Established Corner from Surveyor Cox's notes taken in 1807, where he says he struck the Range line 116 links south of the corner between sections 24 & 25 in Range 16 Wc.
 Present Surveyor Ormikerhoff of Wayne County, County Surveyor Meddell of Ashland County, and H. H. Robinson County Surveyor of Holmes County, Surveyor of Holmes County, H. H. Robinson County Surveyor of Holmes Co 1905.

15.19.9.

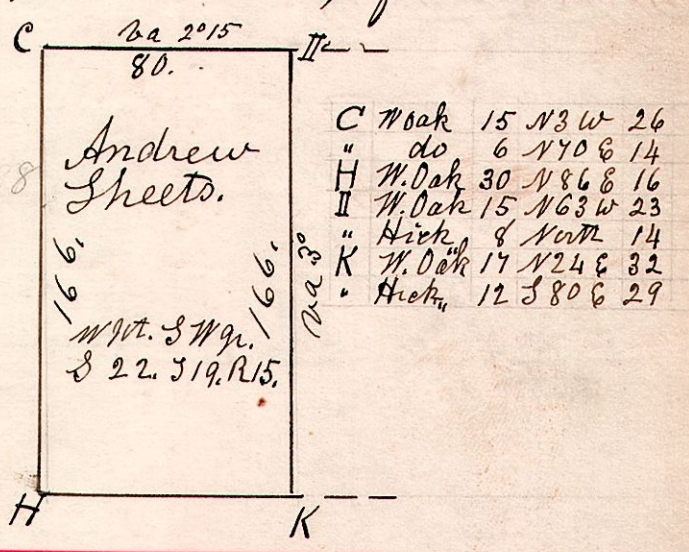
March 10th 1827. Surveyed Section 9. T19. R15. in the following manner.



E. W. Oak 16 North 1 1/2 Stone 7" Sand.
 " do 21 North 40
 F. W. Oak 18 S 59 W 26 Flat Sand Stone.
 " do 30 N 74 E 82
 G. B. Oak 6 S 74 E 17 Stone 6" diam
 " W. Oak 16 N 74 W 56 Hail head,

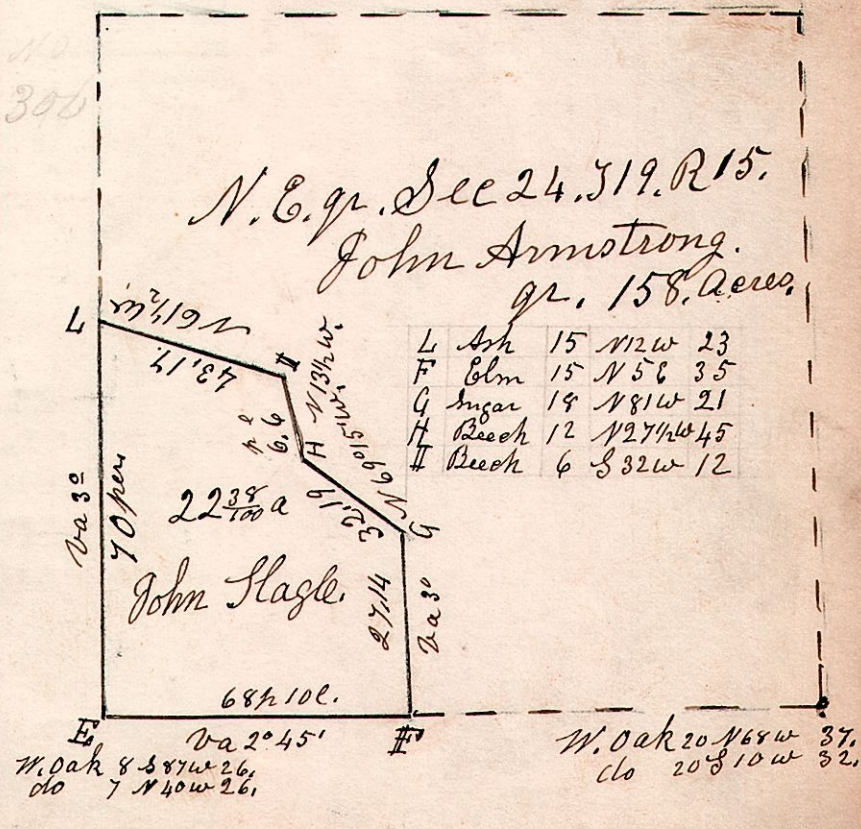
15.19.22.

March 2nd 1827. Surveyed the west part of the S1/2 of Sec 22. T19. R15.



C	W. Oak	15	N 3 W	26
"	do	6	N 40 E	14
H	W. Oak	30	N 86 E	16
I	W. Oak	15	N 63 W	23
"	Hick	8	N 7 W	14
K	W. Oak	17	N 24 E	32
"	Hick	12	S 80 E	29

15.19.24. December 20th 1827 Surveyed part of the N.E. qr of Sec 24 in T19. R15. S.W. cor. of gr.



L	Ash	15	N 12 W	23
F	Elm	15	N 5 E	35
G	Sugar	19	N 81 W	21
H	Beech	12	N 27 1/2 W	45
I	Beech	6	S 32 W	12

W. Oak 20 N 68 W 37.
 do 20 S 10 W 32.