

Section 16, Township 8 Range 5.

5.8.16

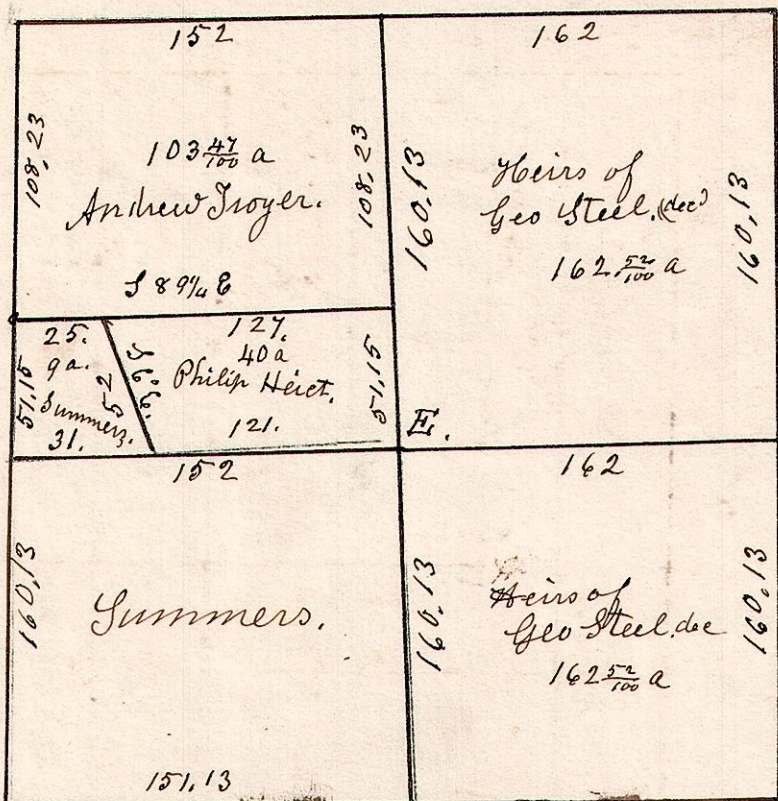
W. Oak 20 N 41 W 18. No oak 10 S 36 E 7. Hickory 12 N 43 E. 34.  
do 20 S 35 W 24. Cherry 10 N 38 E 6. W. Oak 8 N 63 W 28.  
S B

Nov 22 1844.

B. Oak 9 corner.

Stone Corner. D

E. Stone Corner.



C Stone corner Hickory 8, 1288. 11.

Hickory 14 S 22 1/2 E 24. W. Oak 18 N 39 E 87. No oak 1/4 of 6. A W. Oak 24 N 54 E 18. do 16 S 72 W 44. Chestnut 10 S 58 E 12. B. Oak 20 N 11 W 54.

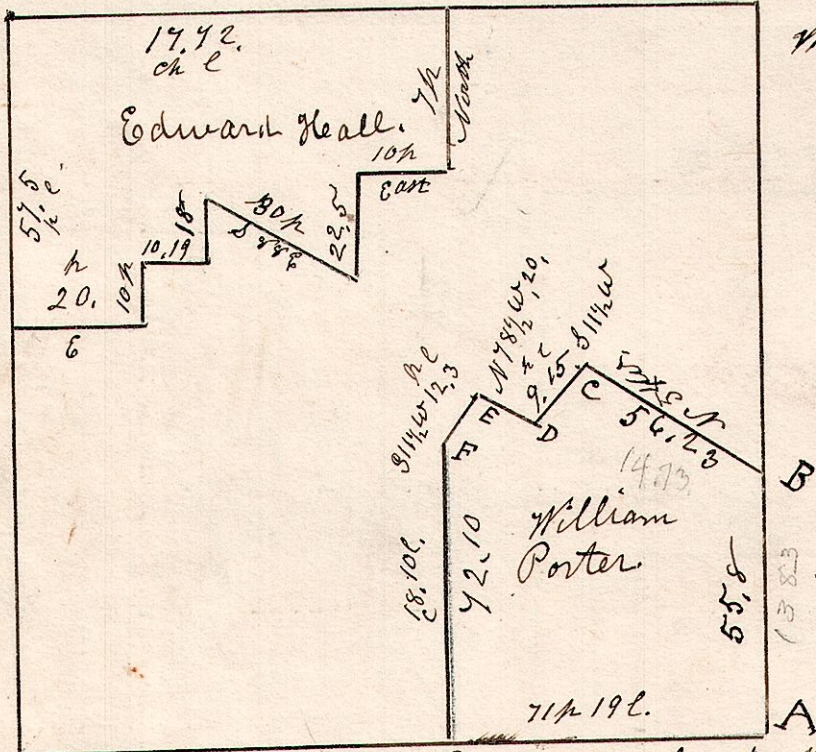
5.9.15.

N.W. qr. Sec 15. 39. R5 (Berlin Village gr.)  
Hickory 12 S 57 W 27.  
do 13 Oak 20 S 64 W 42.

Hickory 12 S 40 E 39.  
B. Oak 20 N 28 E 34.

W. Oak 30 S 19 E 15.  
do 16 N 45 W 22.

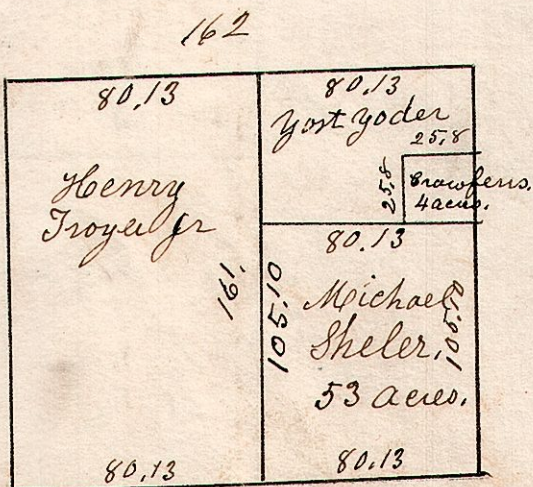
November 23 1828.



B. Oak 18 S 59 E 36. Chestnut 20 N 52 E 52.5. Hickory 12 S 9 W 18. Beech 12 N 23 E 54. Gum 7 S 44 W 4. W. Oak 24 N 55 E 34. do 12 S 63 W 15.

5.9.10.1/2

February 27 1835.  
Surveyed Lot 10. in the 1st gr. of the 9th Township and 5th Range, School Land, Walnut Creek Tp.



5.8.6. N.W. qr Sec 6, 38, R5.

March 29 1854.

