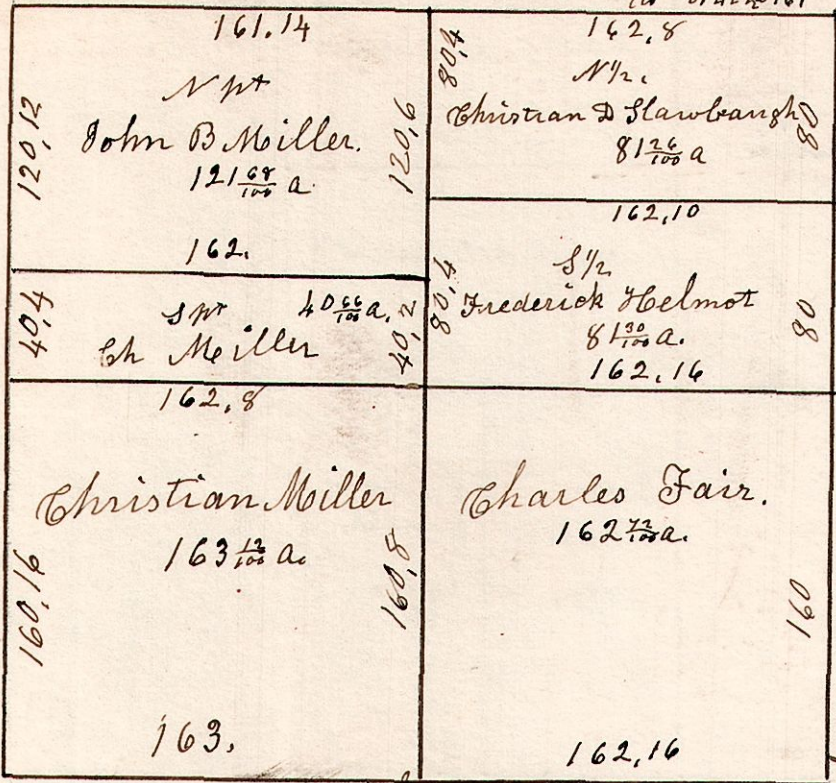


5. 8. 11.

Section 11. T8. R5

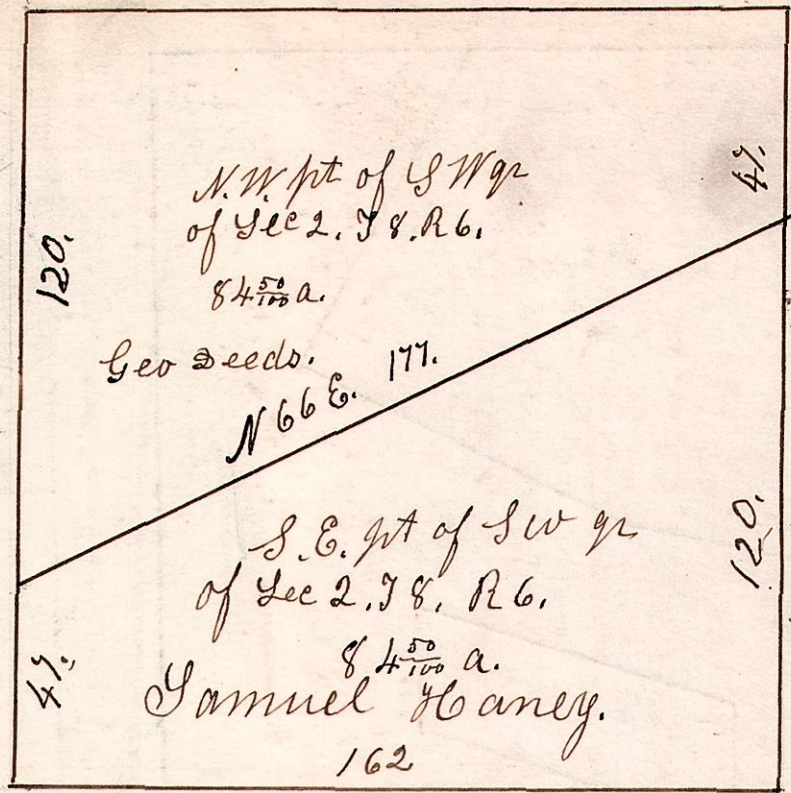
W oak 20 S 24 W 12.
do 12 N 38 W 12.

W Oak 18 S 12 W 12. N 4 W
do 24 N 4 W 42. Hickory 27 E 29
do N 42 W 16.



October 21st 1859.

6. 8. 2.

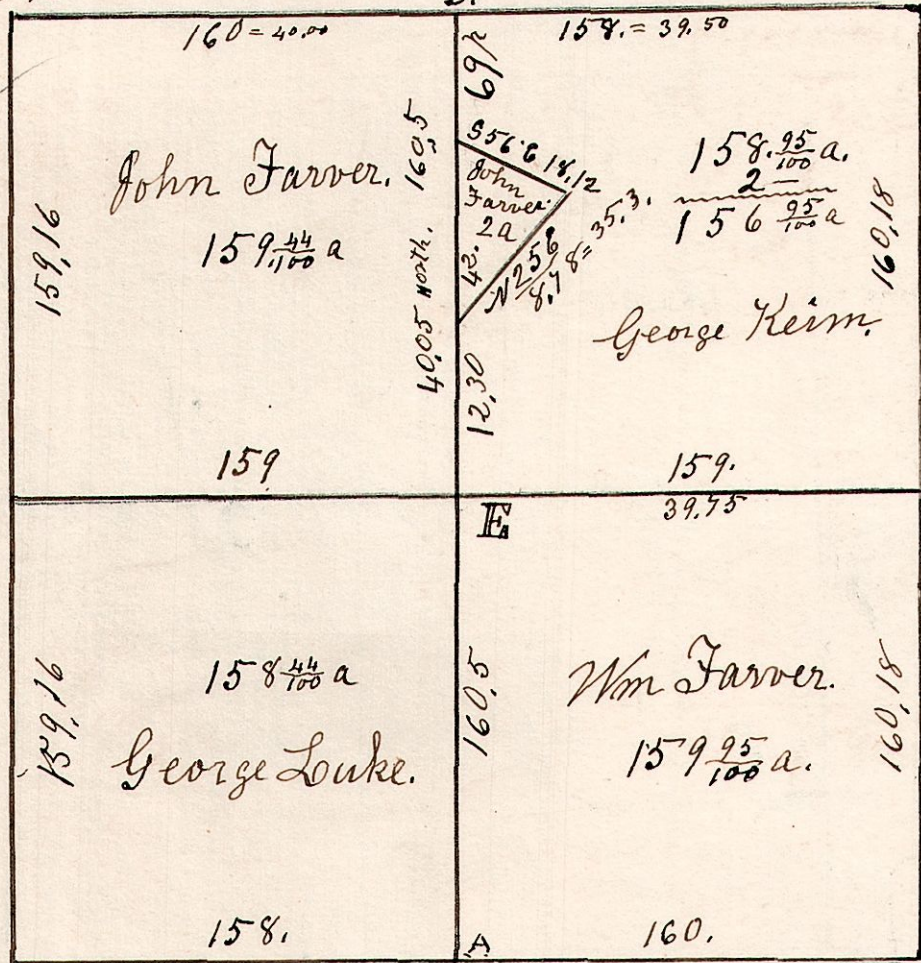


October 22nd 1859.

5. 8. 18.

August 12th 1833. Surveyed Sec 18 in S 8 of Range 5, in the following manner and for the following persons.

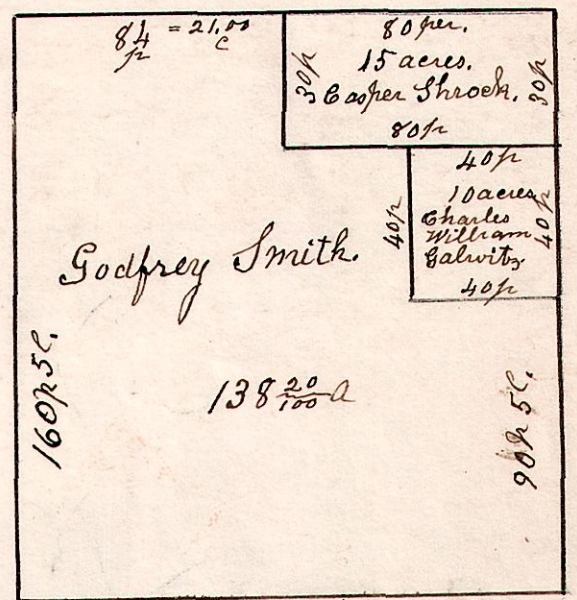
W Oak 15 N 20 W 45. Hickory 14 S 68 E 20. W Oak 16 N 45 W 41.
Elm 15 S 74 E 45. do B. do 15 S 82 W 30. do 15 S 47 E 29.



B. Oak 20 S 6 E 34. W Oak 15 S 83 E 26. B. Oak 11 N 4 E 6.
do 15 N 9 E 6. do 20 N 55 W 34. do 12 S 9 E 31.
E. W oak 20 S 64 W 38. Q. H. I Stone corners, I to G 42 ft.
Dogwood 7 N 68 E 7.

5. 8. 10.

N.W. q. of Sec 10. T8 R5, Feb 27th 1838.

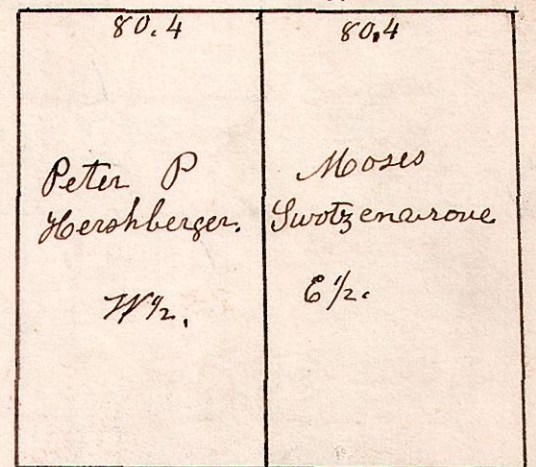


From Elias Foder & wife, write deed for the 15 acre piece to Casper Shrock & to Godfrey Smith for the balance of q., or SW part.

5. 9. 19th.

Lot 19. 1st q. T9. R. 5. School Land.

B. Oak 14 N 53 E 23. W Oak 18 S 7 E 42.
do 15 N 41 W 39. Dogwood 14 N 9 W 20.
160.9. N 89 E.

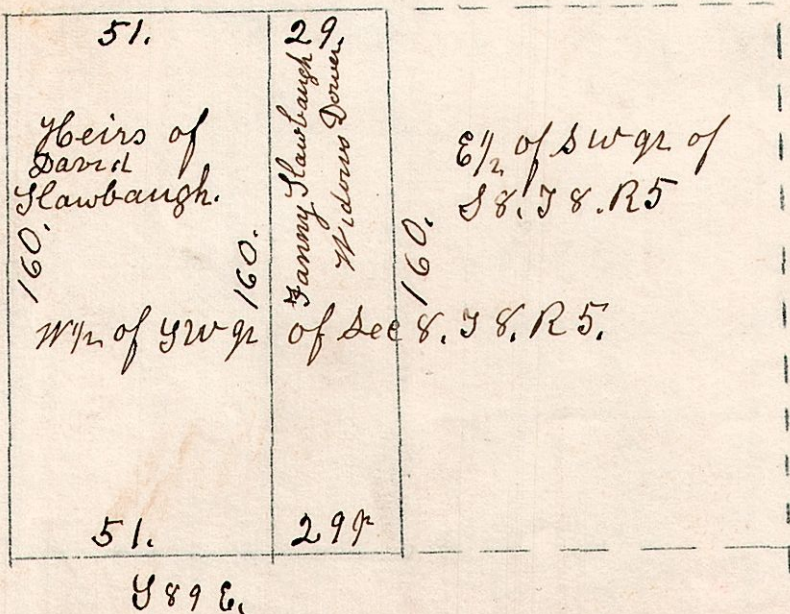


W. oak 19 N 74 E 27. Hickory 349 E 17.
do 24 S 52 E 39. Chestnut. N 48 W 27.

April 18th 1859.

5. 8. 8.

S 89° E.



Surveyed the above
Dr. Wm. Estate
Dec 2nd 1846.

S 89 E.