

5.8.8.

May 30 1832. Surveyed the west half of Sec 8. T8. R5.

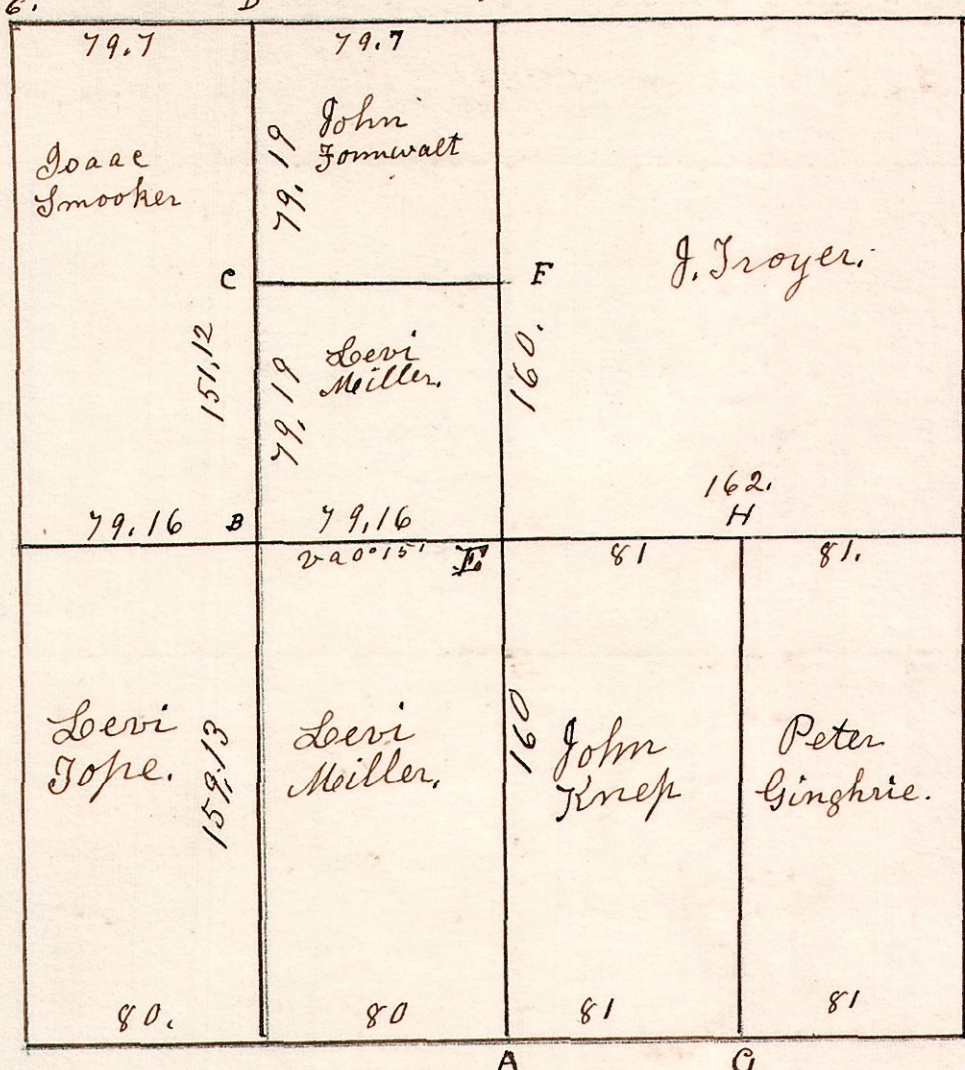
Hickory 4 S 22 E 10.
B. Oak 4 S 69 W 6.

W. Oak 18 N 22 W 26.
do 14 S 22 E 33.

W. Oak 12 S 21 E 29.
do 12 N 4 W 14.

No 255

W. Oak 22 S 56 E 10.
do 30 S 27 W 48.



A	Hickory	16	S 88 E	48
"	W. Oak	15	S 68 W	47
B	Hickory	18	S 64 E	13
"	W. Oak	5	N 12 W	18
C	W. Oak	36	N 78 E	49
"	do	20	N 58 W	34
D	W. Oak	9	N 48 W	28
"	R. Oak	4	S 5 W	11
E	Chestnut	20	S 9 W	32
"	B. Oak	20	N 9 W	25
F	B. Oak	4	S 62 W	15
"	do	3	N 68 W	12
G	W. Oak	20	S 72 E	24
"	do	22	N 61 W	25
H	W. Oak	3	N 53 W	7
"	B. Oak	2	N 33 E	4

B. Oak 12 N 7 W 38.
do 18 N 37 E 43.

W. Oak 20 S 50 E 4.
do 12 N 80 W 49.

W. Oak 40 N 42 E 21.
do 9 S 65 W 27.

W. Oak 20 N 43 W 22.
do 12 S 63 E 15.

5.8.24.

June 15 1830. Surveyed Section 24 in T8 of R5 in the following manner for the following persons.

Chestnut 10 S 58 E 12.
do 16 S 2 1/2 W 29.

B. Oak 16 S 70 E 34.
do 15 N 9 E 6.

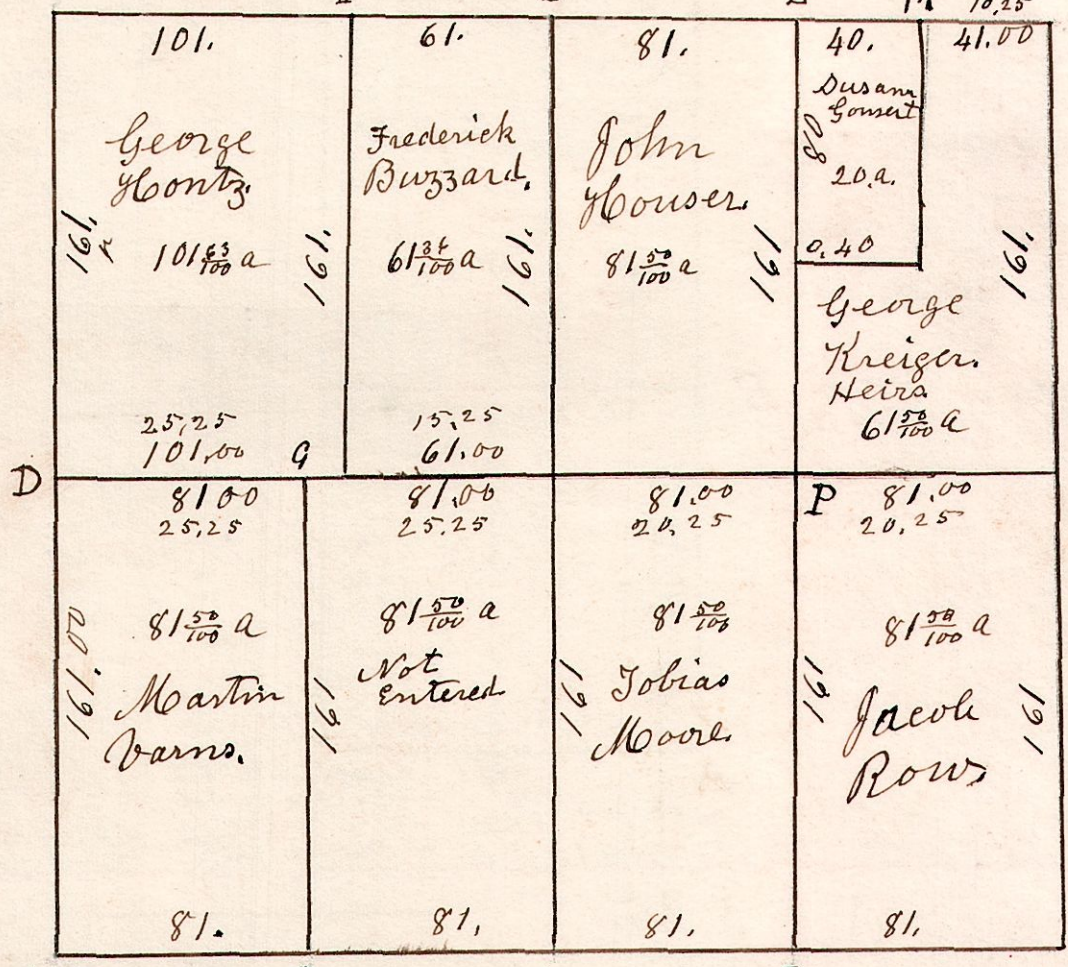
327.4. Stone q. Diam
Beamer

No 256

325.6

B. Oak 8 N 18 E 10 1/2.
do 10 S 27 W 19 1/2.

B. Oak 9 N 48 W 10 1/2.
do 10 East 10.



W. Oak 24 S 15 W 36.
do 18 N 9 E 30.

Gum 11 S 51 E 7.
W. Oak 11 N 32 W 60.

W. Oak 40 S 20 W 53.
do 36 N 65 E 25.

E	W. Oak	6	N 9 E	7
"	do	6	S 28 W	14
F	W. Oak	40	N 66 E	31
"	Hickory	10	N 85 W	10
G	do	12	West	35
"	do	15	N 62 E	26
H	B. Oak	12	S 50 W	4
"	do	8	N 9 W	23

I	W. Oak	15	S 45 E	24
"	Gum	12	S 70 W	11
L	Hickory	4	S 68 E	17
"	do	4	N 68 W	37
M	B. Oak	8	N 23 E	17
"	Hickory	4	S 36 E	17
N	B. Oak	9	S 76 E	15
"	Cherry	10	S 43 W	18

O	W. Oak	40	S 40 E	2
P	W. Oak	15	East	30
"	B. Oak	6	S 41 W	19
R	B. Oak	8	N 15 E	25
"	Hickory	3	S 80 E	13