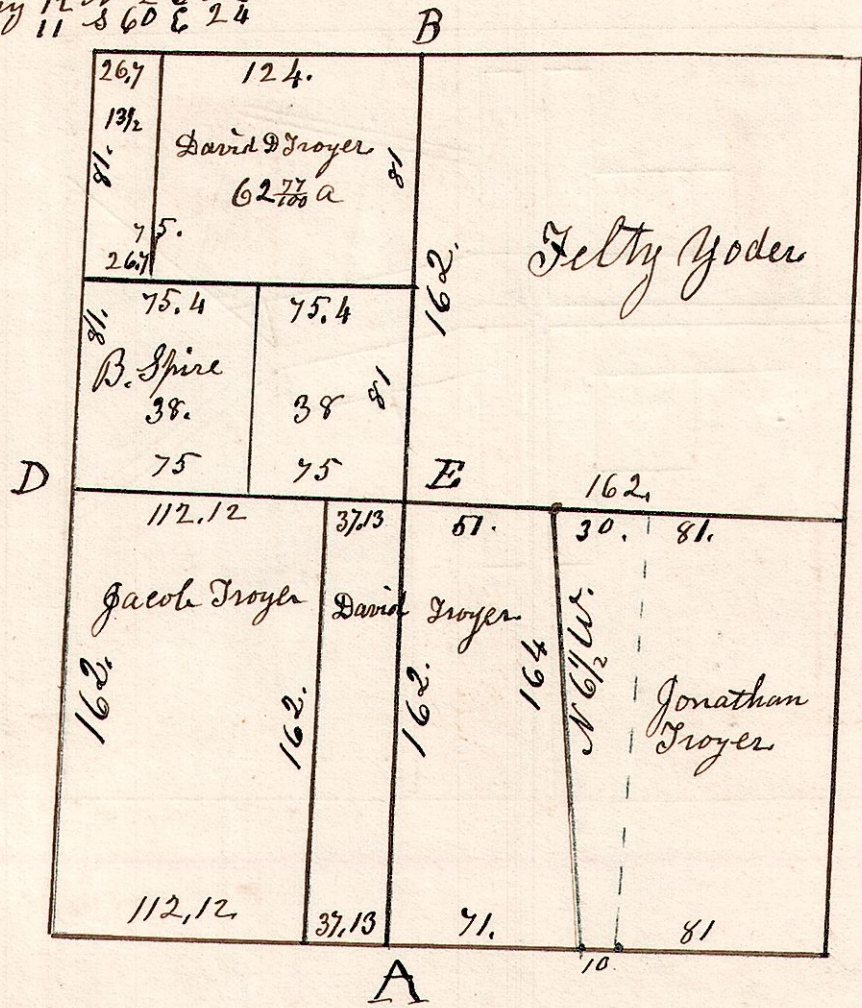


5. 8. 15. March 25<sup>th</sup> 1836. Surveyed Section 15. in Tp 8. R 5. in the following manner and for the following persons.

No 238

Hickory 12 N 2 E 2 1/2  
W Oak 11 S 60 E 2 1/4



W Oak 14 N 21 E 85.  
C B Oak 25 S 21 W 68.

A. W Oak 10 S 36 E 7.  
" Cherry 10 N 3 E 26.

B. W Oak 14 N 12 E 28.  
" do 16 S 60 W 42.

E W Oak 15 S 39 W 19.  
" do 22 N 60 W 57.

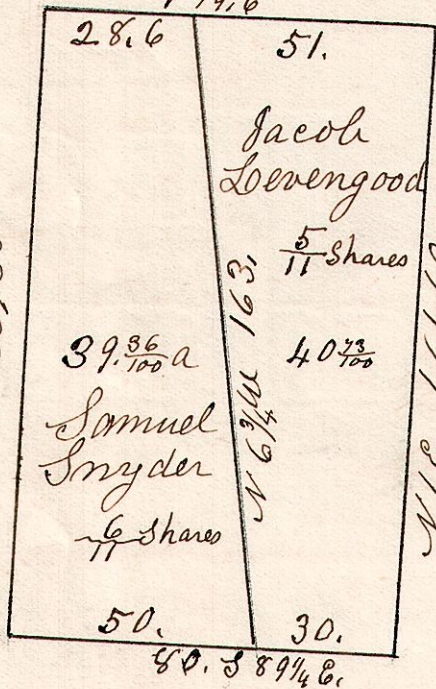
N 40 32 1/2. W 30'  
from D to E 150.6  
from 10 to 30 N 6 1/2 W  
164.8. R. 2nd dom.

1) 51  
12.75

B. Oak 20 N 41 W 18.  
do 20 S 35 W 24.

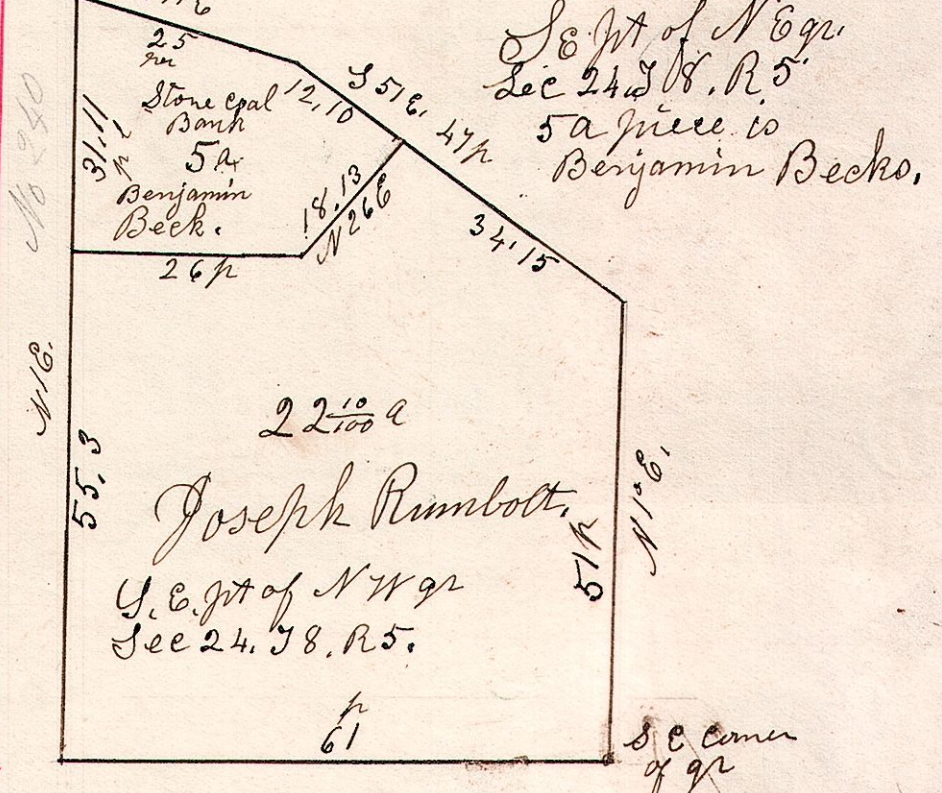
5. 8. 23.

May 24<sup>th</sup> 1850.  
W 1/2 of SW 1/4 of Sec 23. T 8. R 5.



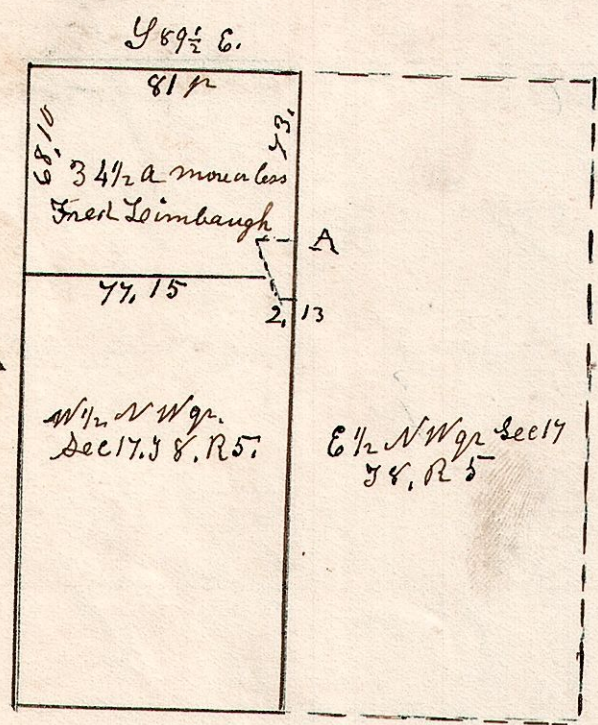
Division by  
Partition of the  
W 1/2 of SW 1/4 of Sec 23.  
T 8. R 5.  
Orchard & Buildings  
on S. Snyder's piece.

5. 8. 24.



SE 1/4 of NE 1/4  
Sec 24 T 8. R 5.  
5 a piece to  
Benjamin Beck.

5. 8. 17.



March 29<sup>th</sup> 1854

5. 8. 16.

NE 1/4 Sec 16 T 8. R 5.



April 5<sup>th</sup> 1866