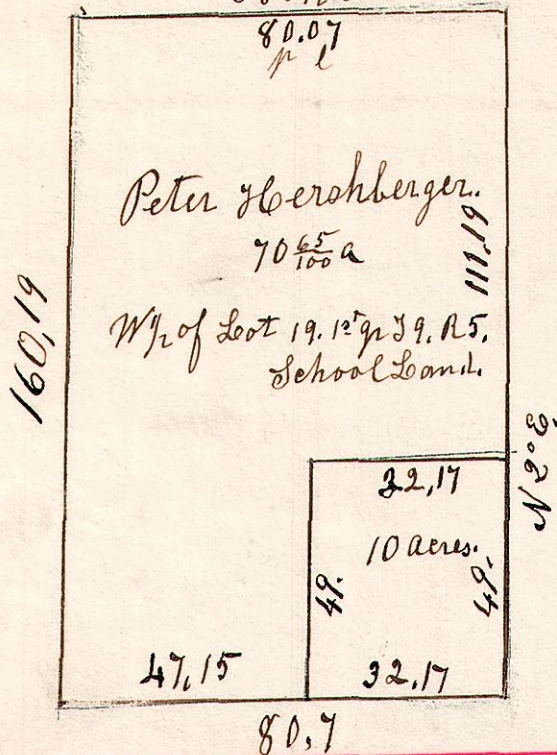


5.9.19.1¹/₂

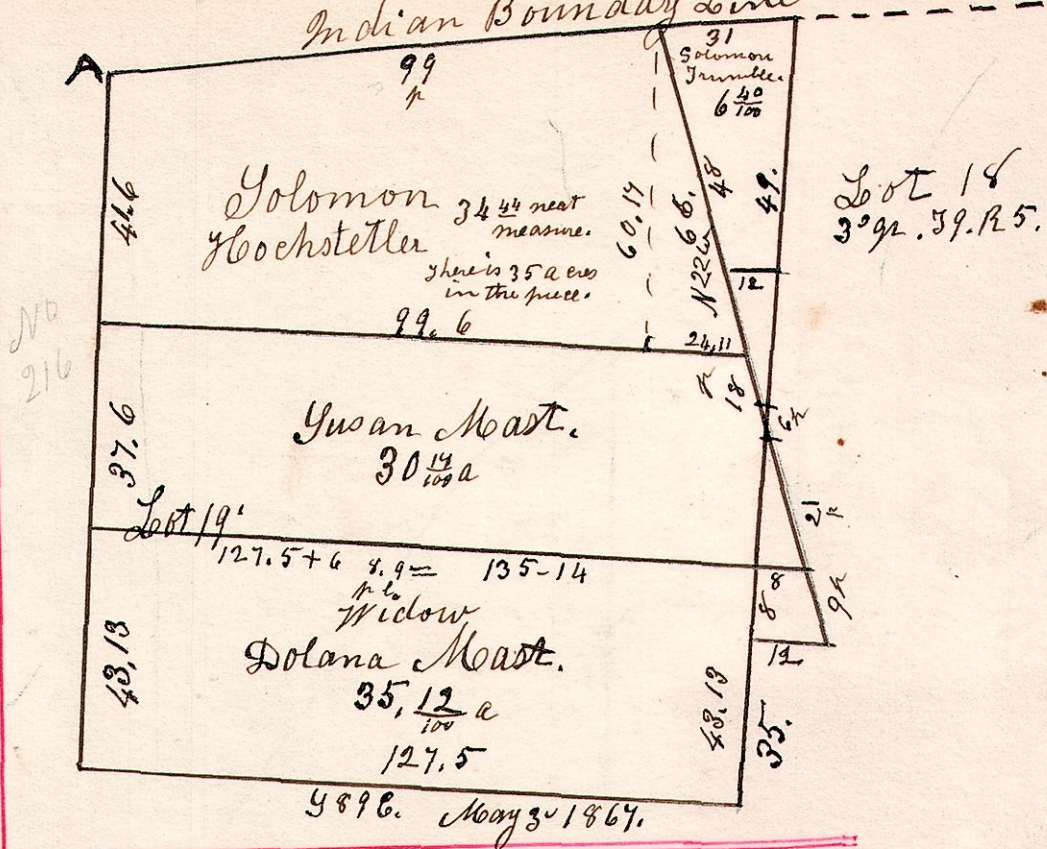
W¹/₂ of lot 19 School
Walnut Creek Sp
388¹/₂ E.



5.9.18.19²/₃

May 3rd 1867.

Indian Boundary Line



5.8.5-1.

October 6th 1828.

Surveyed the North East quarter of Sec 1. 58. R. 6; also
the north west quarter of section 5. 58. R. 5 in the
following manner and for the following persons.

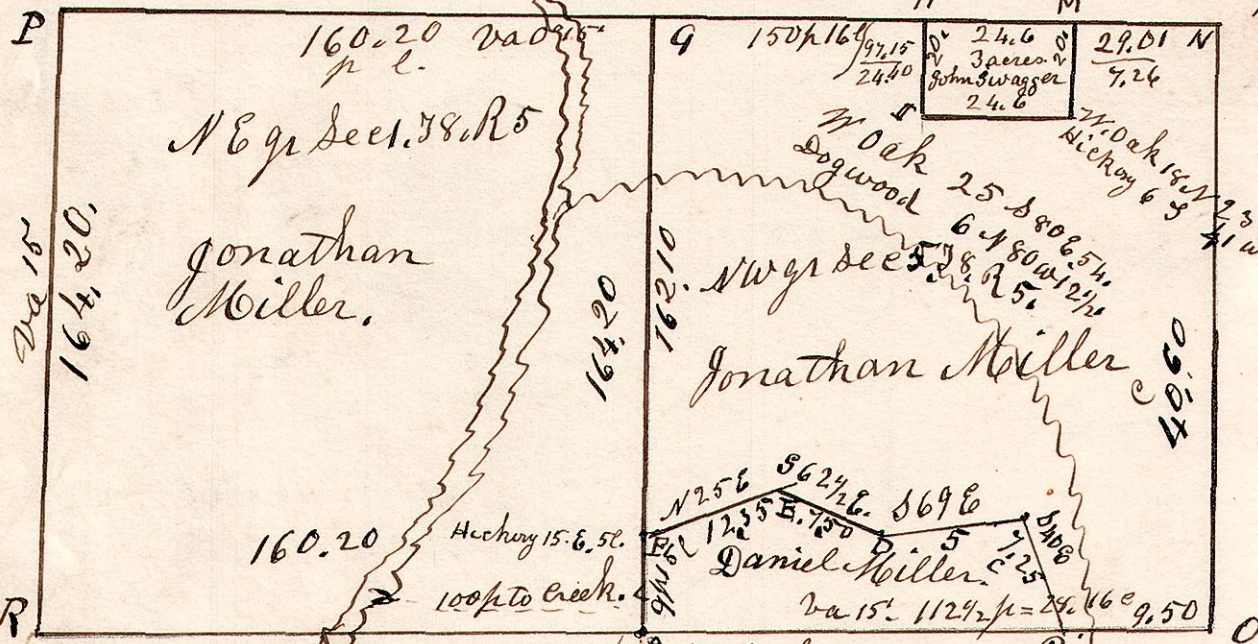
Maple 12 S 6¹/₂ W 33.
W Oak 40 S 7⁵/₈ W 35.

N. E. q. Sec 1. 58. R. 6.

W Oak 34 S 49 W 18.
do 26 N 25 W 24.

N. W. q. Sec 5. 58. R. 5.

W Oak 20 S 73 E 32.
do 40 N 49 W 36.



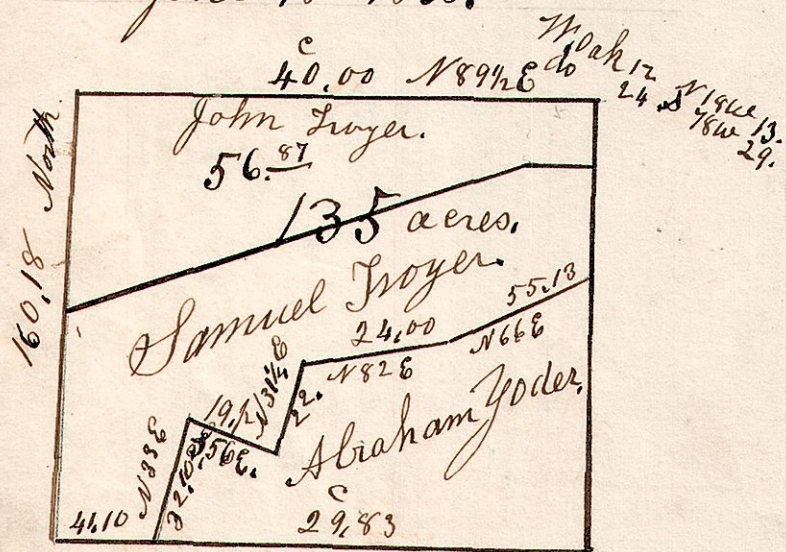
Maple 16. the corner.

S. E. of sec 1
B. oak 12. N 15 W 42.
Hickory 16 N 72 W 35.
do 9. S 21 W 30.

W Oak 36 S 15 E 3.
do 24 N 73 W 29.
S W sec 5. W Oak 10 N 34 W 9.
do 30 S 34 W 36.

5.9.7.20.

N. E. q. Sec 7. 79. R. 5.
April 18th 1833.



R Oak 20 S 44 W 25.
Chestnut 18 N 72 E 34.
160.18 = 40.18 N 89³/₄ E.
B. oak 12 N 58 E 10.
Hickory 12 S 46 W 17.

5.9.2²/₃

3rd q. 59. R. 5.
March 8th 1861.

