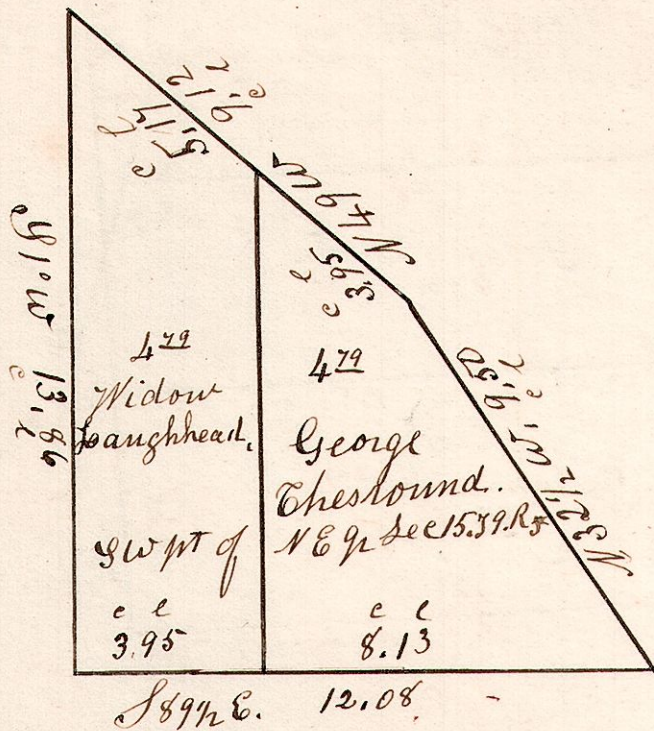


5.9.15.

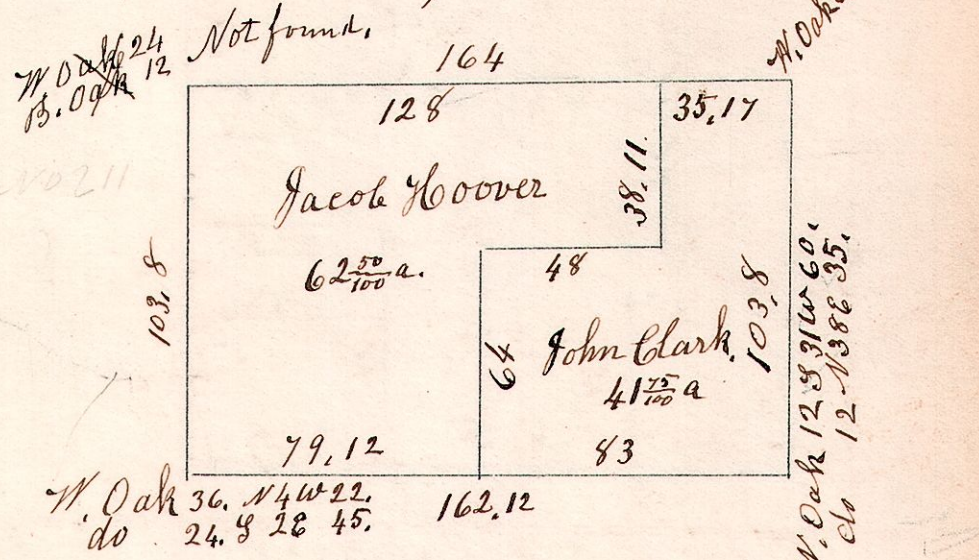
April 27 1850.

South west part. of the north east quarter of Section 15, in Township 9 of Range 5. East of Berlin. April 27 1850.

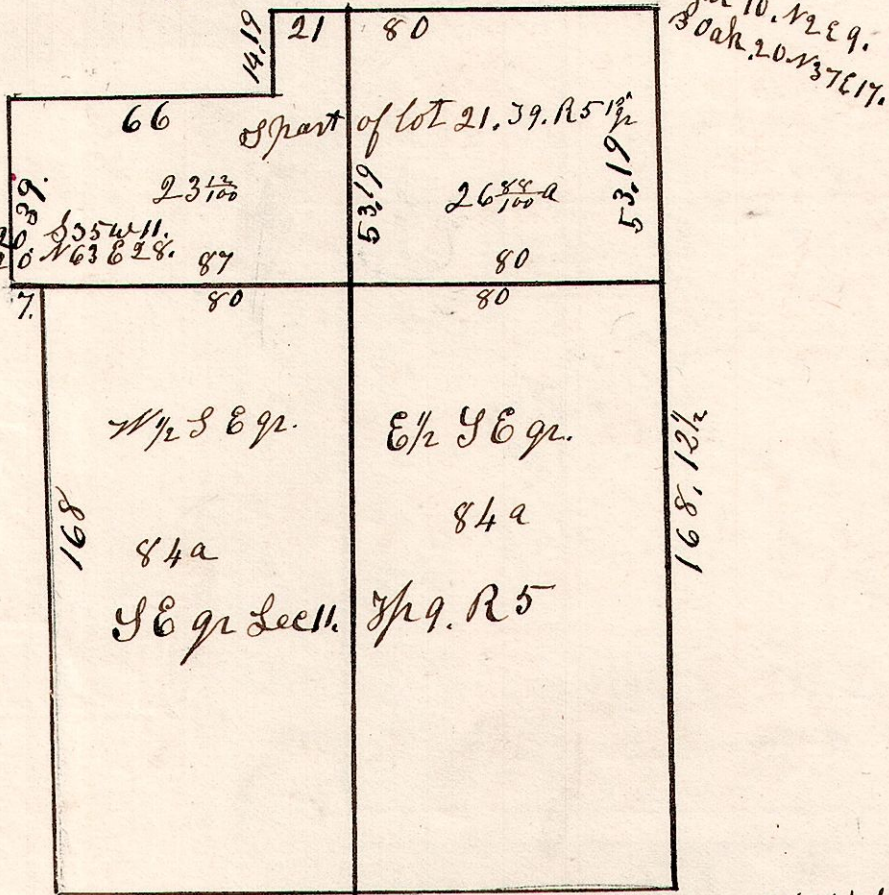
No 210



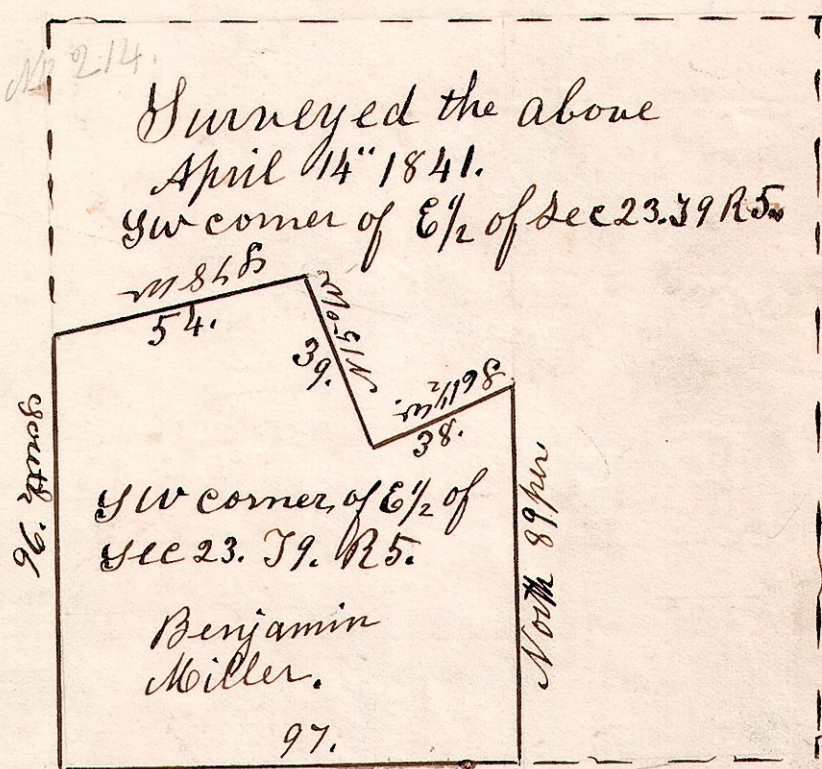
Feb 17 1852, Surveyed Lot 8. 5.9.8.3. T9. R5. 3q.



5.9.11.21 Surveyed the S.E. q. of Sec 11. T9. R5. October 23, 1851.

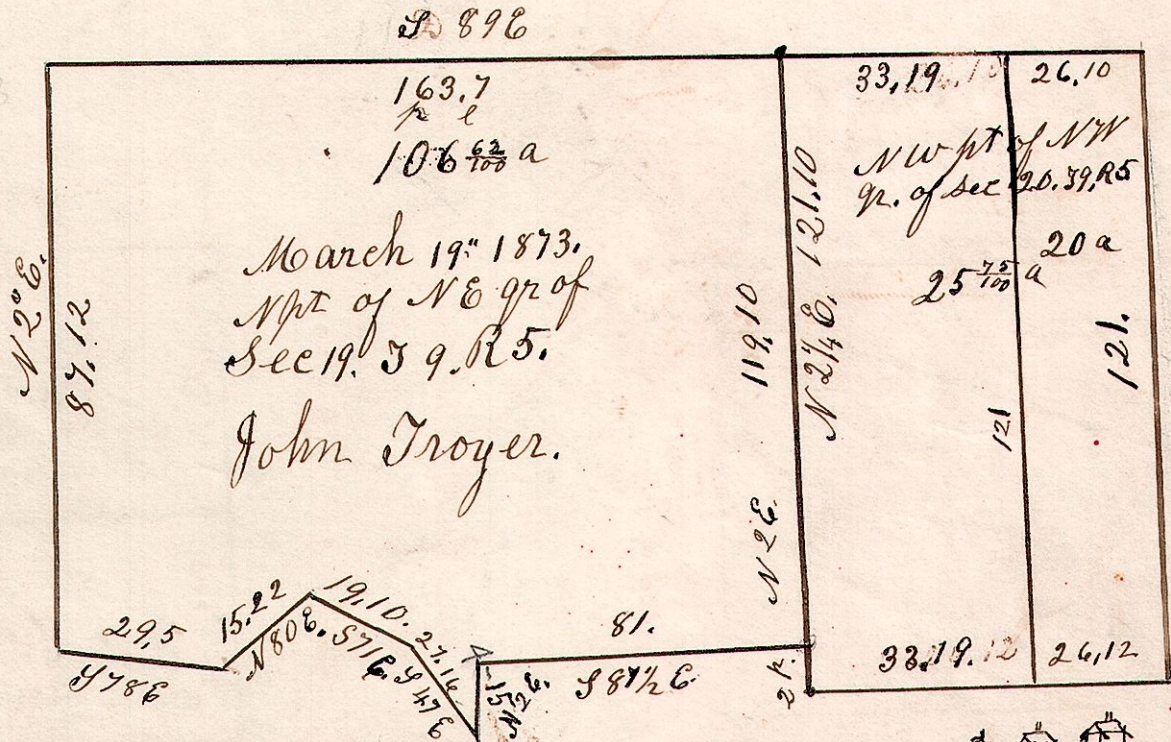


5.9.23, Sw cor 1/2.



5.9.19-20.

March 19 1873.



N. Carlile Walnut Creek P.O.