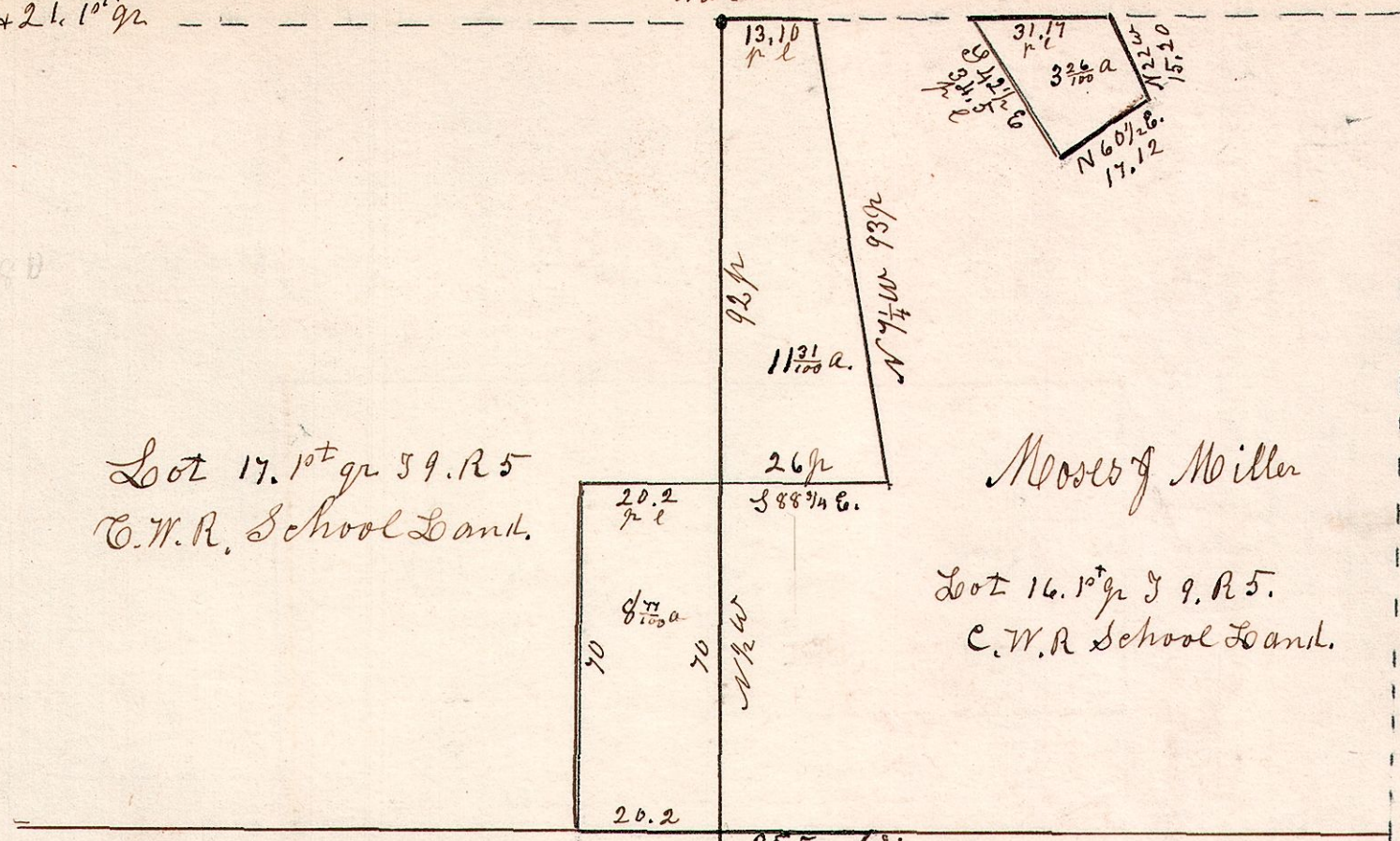


October 7th 1852.

5. 9. 16. 17 & 21. 1st gr

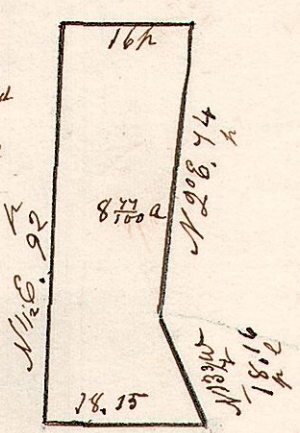


Lot 17. 1st gr 59. R 5
C. W. R. School Land.

Moses J Miller

Lot 14. 1st gr 59. R 5.
C. W. R. School Land.

8 7/100 Acres. This piece is situated in the NW part of lot 16 above marked. Also the above marked piece containing 11 3/100 a is situated in the same corner of the lot. The parties is to have their choice of the two pieces.

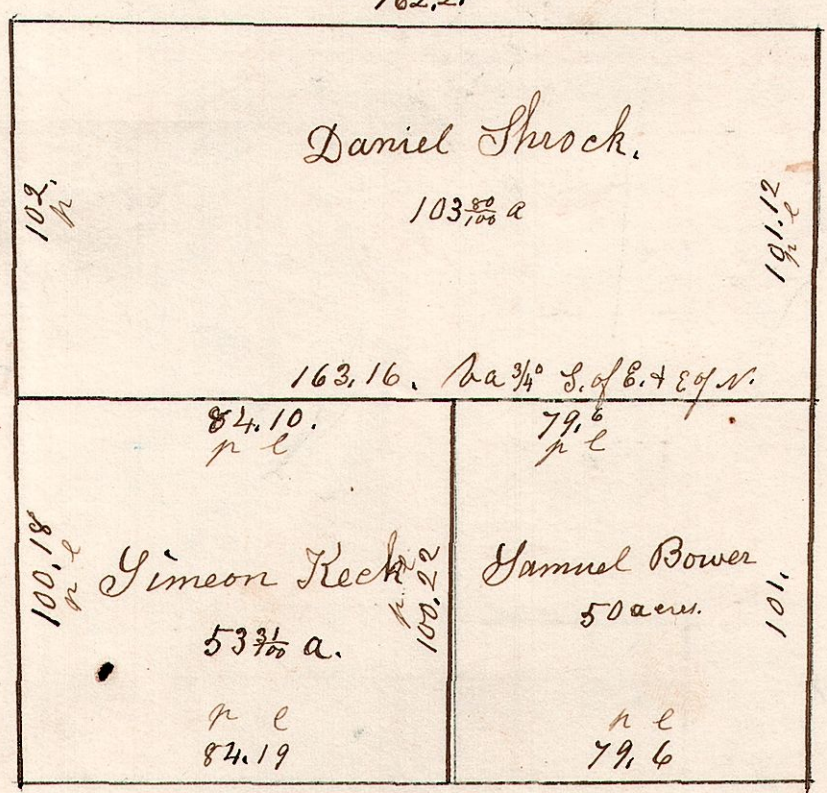


Lot 21. 1st gr 59. R 5
C. W. R. School Land.

Surveyed the above pieces of land for Moses J Miller & others, October 7th 1852

5. 10. 20 & 21. 3rd gr

Lots 20 & 21. 3rd gr
T 10. R 5
March 16th 1854.
162.21

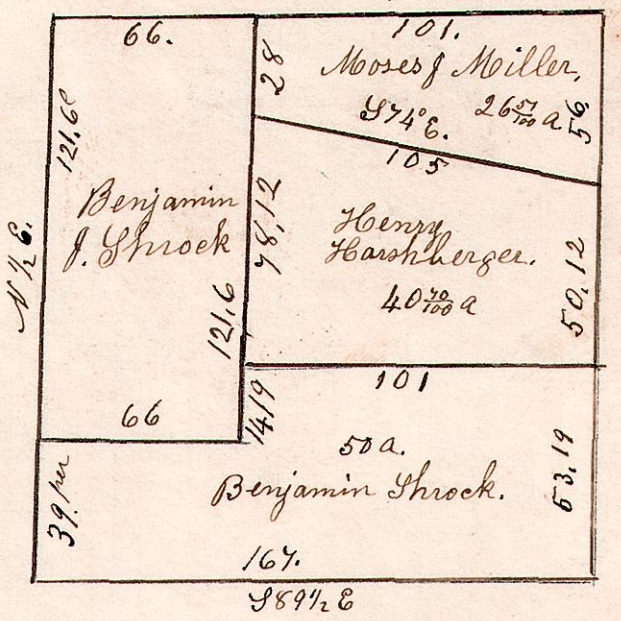


March 16th 1854.

5. 9. 21. 1st gr

March 6th 1835. Surveyed the whole lot.

Lot 21. 1st gr 59. R 5
School Land.
Walnut Creek Sp.



Surveyed Moses J Miller piece January 23rd 1850.